

## Analysis of General Election 2014

Karnataka Constituencies

District	Assembly No.	Constituencies	Voting						Is Third's Votes more than Winning Margin	Third Party		
			Electors	Votes Polled	Percentage	Winning Party	Winner's Votes	Winning Margin			Second's Votes	Second Party
1	CHIKKODI	1442206	1071103	74.27	INC	474373	3003	471370	BJP	42738	YES	NCP
2	BELGAUM	1580895	1078528	68.22	BJP	554417	75860	478557	INC	11509		NOTA
3	BAGALKOT	1568633	1079310	68.81	BJP	571548	116560	454988	INC	10959		IND
4	BIJAPUR	1622635	966757	59.58	BJP	471757	69819	401938	INC	57551		JD(S)
5	GULBARGA	1721990	997638	57.94	INC	507193	74733	432460	BJP	15690		JD(S)
6	RAICHUR	1661606	968889	58.31	INC	443659	1499	442160	BJP	21706	YES	JD(S)
7	BIDAR	1600962	959384	59.93	BJP	459290	92222	367068	INC	58728		JD(S)
8	KOPPAL	1535105	1006508	65.57	BJP	486383	32414	453969	INC	12947		NOTA
9	BELLARY	1487945	1045772	70.28	BJP	534406	85144	449262	INC	12613		JD(S)
10	HAVERI	1558749	1115968	71.59	BJP	566790	87571	479219	INC	15656		IND
11	DHARWAD	1578125	1041226	65.98	BJP	545395	113657	431738	INC	12937		NOTA
12	UTTARA KANNADA	1450599	1001038	69.01	BJP	546939	140700	406239	INC	16277		NOTA
13	DEVANAGERE	1522712	1114868	73.22	BJP	518894	17607	501287	INC	46911		JD(S)
14	SHIMOGA	1562243	1129008	72.27	BJP	606216	363305	242911	INC	240636		JD(S)
15	UDUPI CHIKMAGALUR	1387294	1034108	74.54	BJP	581168	181643	399525	INC	14895		JD(S)
16	HASSAN	1561486	1147172	73.47	JD(S)	509841	100462	409379	INC	165688	YES	BJP
17	DAKSHINA KANNADA	1565219	1207474	77.14	BJP	642739	143709	499030	INC	27254		SDPI
18	CHITRADURGA	1661277	1096499	66.00	INC	467511	101291	366220	BJP	202108	YES	JD(S)
19	TUMKUR	1518518	1101484	72.54	INC	429868	74041	355827	BJP	258683	YES	JD(S)
20	MANDYA	1669262	1192638	71.45	JD(S)	524370	5518	518852	INC	86993	YES	BJP
21	MYSORE	1723134	1159594	67.30	BJP	503908	31608	472300	INC	138587	YES	JD(S)
22	CHMARAJANAGAR	1555781	1133029	72.83	INC	567782	141182	426600	BJP	58760		JD(S)
23	BANGALORE RURAL	2190398	1455244	66.44	INC	652723	231480	421243	BJP	317870	YES	JD(S)
24	BANGALORE NORTH	2401472	1356718	56.50	BJP	718326	229764	488562	INC	92681		JD(S)
25	BANGALORE CENTRAL	1931456	1074589	55.64	BJP	557130	137500	419630	INC	39869		AAAP
26	BANGALORE SOUTH	1998724	1113726	55.72	BJP	633816	228575	405241	INC	25677		JD(S)
27	CHIKKBALLAPUR	1658410	1263274	76.17	INC	424800	9520	415280	BJP	346339	YES	JD(S)
28	KOLAR	1492977	1127315	75.51	INC	418926	47850	371076	JD(S)	267322	YES	BJP

## Analysis of General Election 2014

Kerala Constituencies

District	Assembly No.	Constituencies	Voting						Is Third's Votes more than Winning Margin	Third Party			
			Electors	Votes Polled	Percentage	Winning Party	Winner's Votes	Winning Margin			Second's Votes	Second Party	Third's Votes
	1	KASARAGOD	1243730	974215	78.33	CPM	384964	6921	378043	INC	172826	YES	BJP
	2	KANNUR	1170266	947117	80.93	CPM	427622	6566	421056	INC	51636	YES	BJP
	3	VADAKARA	1182504	959342	81.13	INC	416479	3306	413173	CPM	76313	YES	BJP
	4	WAYANAD	1249420	915006	73.23	INC	377035	20870	356165	CPM	80752	YES	BJP
	5	KOZHICODE	1182484	943009	79.75	INC	397615	16883	380732	CPM	115760	YES	BJP
	6	MALAPPURAM	1198444	853467	71.21	IUML	437723	194739	242984	CPM	64705		BJP
	7	PONNANI	1180789	871592	73.81	IUML	378503	25410	353093	IND	75212	YES	BJP
	8	PALAKKAD	1208726	910322	75.31	CPM	412897	105300	307597	SJD	136587	YES	BJP
	9	ALATHUR	1216351	927228	76.23	CPM	411808	37312	374496	INC	87803	YES	BJP
	10	THRISSUR	1275288	920505	72.18	CPI	389209	38227	350982	INC	102681	YES	BJP
	11	CHALAKUDY	1150497	884033	76.84	IND	358440	13884	344556	INC	92848	YES	BJP
	12	ERNAKULAM	1156492	850834	73.57	INC	353841	87047	266794	IND	99003	YES	BJP
	13	IDUKKI	1158735	819766	70.75	IND	382019	50542	331477	INC	50438		BJP
	14	KOTTAYAM	1161465	831636	71.60	KEC(M)	424194	120599	303595	JD(S)	44357		IND
	15	ALAPPUZHA	1271324	997464	78.46	INC	462525	19407	443118	CPM	43051	YES	RSPK(B)
	16	MAVELIKKARA	1252668	889060	70.97	INC	402432	32737	369695	CPI	79743	YES	BJP
	17	PATHANAMTHITTA	1323906	869452	65.67	INC	358842	56191	302651	IND	138954	YES	BJP
	18	KOLLAM	1219415	879056	72.09	RSP	408528	37649	370879	CPM	58671	YES	BJP
	19	ATTINGAL	1251398	859350	68.67	CPM	392478	69378	323100	INC	90528	YES	BJP
	20	THIRUVANANTHAPURAM	1272748	873441	68.63	INC	297806	15470	282336	BJP	248941	YES	CPI

### Analysis of General Election 2014

Maharashtra Constituencies

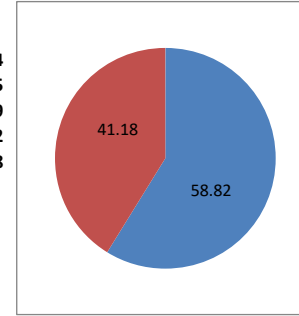
District	Lok Sabha Constituency No.	Constituencies	Voting			Winner's Party	Winner's Votes	Winning Margin	Second's Votes	Second Party	Third's Votes	Is Third's Votes more than Winning Margin	Third Party
			Electors	Votes Polled	Percentage								
	1	NANDURBAR	1672943	1116676	66.75	BJP	579486	106905	472581	INC	21178		NOTA
	2	DHULE	1675367	983083	58.68	BJP	529450	130723	398727	INC	9897		BSP
	3	JALGAON	1707969	990332	57.98	BJP	647773	383525	264248	NCP	10838		BSP
	4	RAVER	1593389	1009213	63.34	BJP	605452	318068	287384	NCP	29752		BSP
	5	BULDHANA	1595435	978626	61.34	SHS	509145	159579	349566	NCP	33783		BSP
	6	AKOLA	1672643	978491	58.50	BJP	456472	203116	253356	INC	238776	YES	BBM
	7	AMRAVATI	1612739	1004061	62.26	SHS	467212	137932	329280	NCP	98200		BSP
	8	WARDHA	1564552	1013445	64.78	BJP	537518	215783	321735	INC	90866		BSP
	9	RAMTEK	1677266	1050316	62.62	SHS	519892	175791	344101	INC	95051		BSP
	10	NAGPUR	1900784	1085038	57.08	BJP	587767	284848	302919	INC	96433		BSP
	11	BHANDARA-GONDIYA	1655852	1197196	72.30	BJP	606129	149254	456875	NCP	50958		BSP
	12	GADCHIROLI-CHIMUR	1468437	1027129	69.95	BJP	535982	236870	299112	INC	66906		BSP
	13	CHANDRAPUR	1753690	1109743	63.28	BJP	508049	236269	271780	INC	204413		AAAP
	14	YAVATMAL-WASHIM	1755292	1032949	58.85	SHS	477905	93816	384089	INC	48981		BSP
	15	HINGOLI	1586194	1051164	66.27	INC	467397	1632	465765	SHS	25145	YES	BSP
	16	NANDED	1687057	1013350	60.07	INC	493075	81455	411620	BJP	28447		BMUP
	17	PARBHANI	1803792	1162233	64.43	SHS	578455	127155	451300	NCP	33716		BSP
	18	JALNA	1612056	1066259	66.14	BJP	591428	206798	384630	INC	23719		BSP
	19	AURANGABAD	1589395	982933	61.84	SHS	520902	162000	358902	INC	37419		BSP
	20	DINDORI	1530208	970182	63.40	BJP	542784	247619	295165	NCP	72599		CPM
	21	NASHIK	1593774	937405	58.82	SHS	494735	187336	307399	NCP	63050		MNS
	22	PALGHAR	1578149	992618	62.90	BJP	533201	239520	293681	BVA	76890		CPM
	23	BHIWANDI	1696584	875605	51.61	BJP	411070	109450	301620	INC	93647		MNS
	24	KALYAN	1922034	824196	42.88	SHS	440892	250749	190143	NCP	122349		MNS
	25	THANE	2073251	1054189	50.85	SHS	595364	281299	314065	NCP	48863		MNS
	26	MUMBAI NORTH	1783870	946562	53.06	BJP	664004	446582	217422	INC	32364		AAAP
	27	MUMBAI NORTH WEST	1775416	895517	50.44	SHS	464820	183028	281792	INC	66088		MNS
	28	MUMBAI NORTH EAST	1668357	861761	51.65	BJP	525285	317122	208163	NCP	76451		AAAP
	29	MUMBAI NORTH CENTRAL	1737084	845292	48.66	BJP	478535	186771	291764	INC	34824		AAAP
	30	MUMBAI SOUTH CENTRAL	1447886	768627	53.09	SHS	381008	138180	242828	INC	73096		MNS
	31	MUMBAI SOUTH	1485844	779741	52.48	SHS	374609	128564	246045	INC	84773		MNS
	32	RAIGAD	1532781	987766	64.44	SHS	396178	2110	394068	NCP	129730	YES	PWPI
	33	MAVAL	1953741	1174335	60.11	SHS	512226	157397	354829	PWPI	182293	YES	NCP
	34	PUNE	1835835	993278	54.10	BJP	569825	315769	254056	INC	93502		MNS
	35	BARAMATI	1813553	1066556	58.81	NCP	521562	69719	451843	RSPS	26396		AAAP
	36	SHIRUR	1824112	1089506	59.73	SHS	643415	301814	341601	NCP	36448		MNS
	37	AHMEDNAGAR	1705005	1062318	62.31	BJP	605185	209122	396063	NCP	12683		IND
	38	SHIRDI	1462267	932645	63.78	SHS	532936	199922	333014	INC	11580		AAAP
	39	BEED	1792652	1232200	68.74	BJP	635995	136454	499541	NCP	14166		BSP
	40	OSMANABAD	1759186	1118151	63.56	SHS	607699	234325	373374	NCP	28322		BSP
	41	LATUR	1686957	1057156	62.67	BJP	616509	253395	363114	INC	20029		BSP
	42	SOLAPUR	1702739	951201	55.86	BJP	517879	149674	368205	INC	19041		BSP
	43	MADHA	1727322	1079619	62.50	NCP	489989	25344	464645	SWP	25187		IND
	44	SANGLI	1649107	1046659	63.47	BJP	611563	239292	372271	INC	11378		BSP
	45	SATARA	1719998	976681	56.78	NCP	522531	366594	155937	IND	82489		AAAP
	46	RATNAGIRI-SINDHUDURG	1367362	896256	65.55	SHS	493088	150051	343037	INC	13088		BSP
	47	KOLHAPUR	1758293	1260289	71.68	NCP	607665	33259	574406	SHS	13162		PWPI
	48	HATKANANGLE	1630604	1188871	72.91	SWP	640428	177810	462618	INC	25648		IND
			80798823	48717419	60.29		25650469	9149790	16500679		2834614		

**2014 MAHARASHTRA LOK SABHA ELECTION**

**CONSTITUENCY 21 NASIK**

**GODSE HEMANT TUKARAM (Winner)** 494735  
**CHHAGAN BHUJBAL (Second)** 307399  
**Winning Margin** 187336

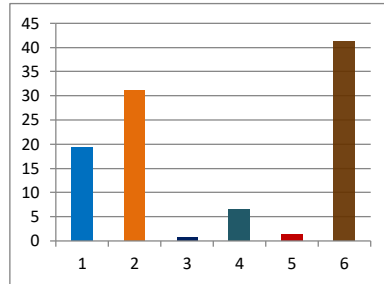
**TOTAL ELECTORS** 1593774  
**VOTES POLLED** 937405  
**VOTES NOT POLLED** 656369  
**VOTING PERCENTAGE** 58.82  
**NON VOTING PERCENTAGE** 41.18



**Winning margin as percentage of Polled Votes** 19.98  
**Winning margin as percentage of Total Electors** 11.75

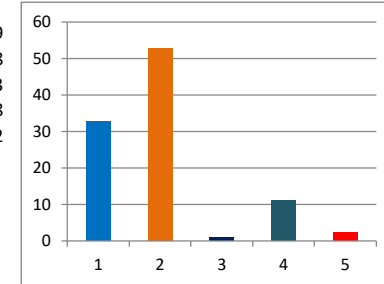
**Percentage of votes secured over total electors in the constituency**

1 NCP 19.29  
 2 SHS 31.04  
 3 AAP 0.61  
 4 OTHER PARTIES 6.52  
 5 IND 1.36  
 6 NON VOTING % 41.18



**Percentage of votes secured over total votes polled in the constituency**

1 NCP 32.79  
 2 SHS 52.78  
 3 AAP 1.03  
 4 OTHER PARTIES 11.08  
 5 IND 2.32



**(TOTAL ELECTORS**

**1593774  
 VOTES SECURED**

**% of votes secured**

SL NO	CANDIDATE NAME	SEX	AGE	CATEGORY	PARTY	VOTES SECURED		TOTAL	% of votes secured	
						GENERAL	POSTAL		Over total electors in constituency	Over total votes polled in constituency
1	GODSE HEMANT TUKARAM	M	43	GEN	SHS	493605	1130	494735	31.04	52.78
2	CHHAGAN BHUJBAL	M	66	GEN	NCP	306726	673	307399	19.29	32.79
3	ADV. TANAJI SUKDEO JAIBHAVE	M	51	GEN	CPM	17136	18	17154	1.08	1.83
4	DINKAR DHARMA PATIL	M	53	GEN	BSP	20883	13	20896	1.31	2.23
5	DR. PARDEEP PAWAR	M	49	GEN	MNS	62936	114	63050	3.96	6.73
6	AWHAD MAHESH ZUNJAR	M	43	GEN	AIFB	1204	0	1204	0.08	0.13
7	PATHAN AYUB MADDEKHAN	M	45	GEN	IUML	697	0	697	0.04	0.07
8	PATHAN SAKHAWATKHA YASINKHA	M	63	GEN	BMUP	842	3	845	0.05	0.09
9	VIJAY BALIRAM PANDHARE	M	58	GEN	AAAP	9634	38	9672	0.61	1.03
10	PRAKASH GIRDHAR KANOJE	M	46	GEN	IND	1121	0	1121	0.07	0.12
11	PRAMOD GYANIRAM NATHEKAR	M	48	SC	IND	1580	0	1580	0.10	0.17
12	FASALE BABAN NAMDEO	M	29	GEN	IND	3792	0	3792	0.24	0.40
13	MAKSUD ILIYAS KHAN	M	38	GEN	IND	1253	0	1253	0.08	0.13
14	VISHNU RAMDAS JADHAV	M	32	GEN	IND	1666	0	1666	0.10	0.18
15	SARKATE DEVIDAS PIRAJI	M	38	SC	IND	3425	0	3425	0.21	0.37
16	NONE OF THE ABOVE				NOTA	8905	11	8916	0.56	0.95
						935405	2000	937405		100.00

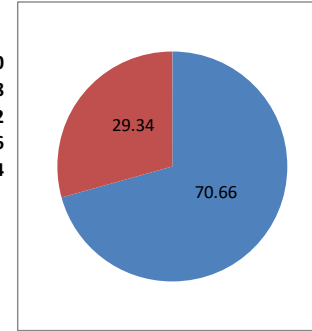
**2014 LOK SABHA ELECTION**

**CONSTITUENCY ANDAMAN & NICOBAR ISLANDS**

**BISHNU PADA RAY (Winner) 90969**  
**KULDEEP RAI SHARMA (Second) 83157**  
**Winning Margin 7812**

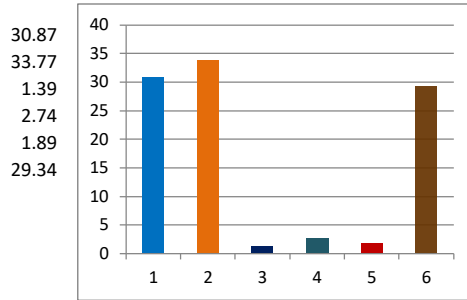
**Winning margin as percentage of Polled Votes 4.10**  
**Winning margin as percentage of Total Electors 2.90**

**TOTAL ELECTORS 269360**  
**VOTES POLLED 190328**  
**VOTES NOT POLLED 79032**  
**VOTING PERCENTAGE 70.66**  
**NON VOTING PERCENTAGE 29.34**



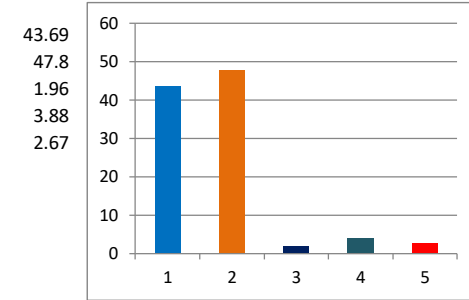
**Percentage of votes secured over total electors in the constituency**

- 1 INC
- 2 BJP
- 3 AAP
- 4 OTHER PARTIES
- 5 IND
- 6 NON VOTING %



**Percentage of votes secured over total votes polled in the constituency**

- 1 INC
- 2 BJP
- 3 AAP
- 4 OTHER PARTIES
- 5 IND



**(TOTAL ELECTORS**

**269360**

**VOTES SECURED**

**% of votes secured**

**Over total electors in constituency**

**Over total votes polled in constituency**

SL NO	CANDIDATE NAME	SEX	AGE	CATEGORY	PARTY	GENERAL	POSTAL	TOTAL	<u>Over total electors in constituency</u>	<u>Over total votes polled in constituency</u>
1	R.S. UMA BHARATTHY	F	49	GEN	NCP	1150	1	1151	0.43	0.60
2	KULDEEP RAI SHARMA	M	46	GEN	INC	83144	13	83157	30.87	43.69
3	GOUR CHANDRA MAJUMDER	M	47	GEN	BSP	1139	0	1139	0.42	0.60
4	K.G. DAS	M	70	GEN	CPM	1776	1	1777	0.66	0.93
5	BISHNU PADA RAY	M	64	GEN	BJP	90882	87	90969	33.77	47.80
6	ANITA MONDAL	F	48	GEN	AITC	2283	0	2283	0.85	1.20
7	N.K.P. NAIR	M	59	GEN	CPI(ML)(L)	436	0	436	0.16	0.23
8	A. PANDIAN	M	41	GEN	AIFB	225	0	225	0.08	0.12
9	RAGHUBIR SINGH	M	49	GEN	SP	379	0	379	0.14	0.20
10	SANJAY MESHACK	M	43	GEN	AAAP	3725	12	3737	1.39	1.96
11	N. KANNAN	M	35	GEN	IND	314	0	314	0.12	0.16
12	V.V. KHALID	M	46	GEN	IND	429	0	429	0.16	0.23
13	PRAKASH MINJ	M	38	ST	IND	1587	0	1587	0.59	0.83
14	C.G. SAJI KUMAR	M	41	GEN	IND	334	0	334	0.12	0.18
15	SARAVANNAN	M	38	GEN	IND	847	0	847	0.31	0.45
16	NONE OF THE ABOVE				NOTA	1563	1	1563	0.58	0.82

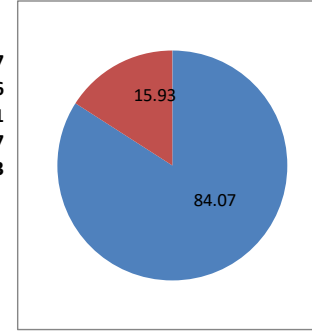
**2014 LOK SABHA ELECTION**

**CONSTITUENCY 1. DADRA & NAGAR HAVELI**

**PATEL NATUBHAI GOMANBHAI (Winner) 80790**  
**DELKAR MOHANBHAI SANJIBHAI(Second) 74576**  
**Winning Margin 6214**

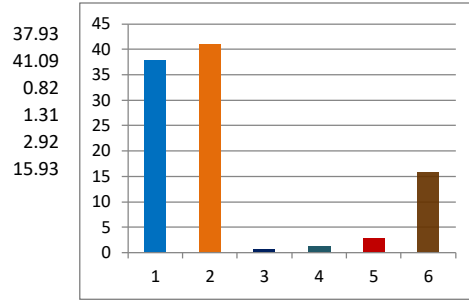
**Winning margin as percentage of Polled Votes 3.76**  
**Winning margin as percentage of Total Electors 3.16**

**TOTAL ELECTORS 196597**  
**VOTES POLLED 165286**  
**VOTES NOT POLLED 31311**  
**VOTING PERCENTAGE 84.07**  
**NON VOTING PERCENTAGE 15.93**



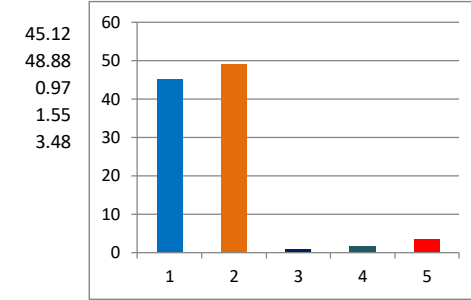
Percentage of votes secured over total electors in the constituency

- 1 INC
- 2 BJP
- 3 NCP
- 4 OTHER PARTIES
- 5 IND
- 6 NON VOTING %



Percentage of votes secured over total votes polled in the constituency

- 1 INC
- 2 BJP
- 3 NCP
- 4 OTHER PARTIES
- 5 IND



(TOTAL ELECTORS

196597  
VOTES SECURED

% of votes secured

Over total electors in constituency

Over total votes polled in constituency

SL NO	CANDIDATE NAME	SEX	AGE	CATEGORY	PARTY	GENERAL	POSTAL	TOTAL	<u>Over total electors in constituency</u>	<u>Over total votes polled in constituency</u>
1	KHULAT JANIYABHAI CHANDUBHAI	M	58	ST	NCP	1611	0	1611	0.82	0.97
2	DELKAR MOHANBHAI SANJIBHAI	M	51	ST	INC	74576	0	74576	37.93	45.12
3	PATEL NATUBHAI GOMANBHAI	M	41	ST	BJP	80790	0	80790	41.09	48.88
4	PATEL HEMANTBHAI KESHAVBHAI	M	43	ST	BSP	982	0	982	0.50	0.59
5	KISHAN NATHU GHUTIYA	M	44	ST	SHS	378	0	378	0.19	0.23
6	PATEL CHHOTUBHAI BABUBHAI	M	49	ST	AAAP	621	0	621	0.32	0.38
7	VIJAYBHAI NATHUBHAI BHOYA	M	30	ST	JD(U)	232	0	232	0.12	0.14
8	UMEDBHAI LALLUBHAI PATEL	M	47	ST	BMUP	348	0	348	0.18	0.21
9	KAMUBEN KHAPABHAI PATEL	F	44	ST	IND	418	0	418	0.21	0.25
10	PRAKASH VANSHA KHANVELKAR	M	57	ST	IND	1214	0	1214	0.62	0.73
11	BHURKUD DILIPBHAI NAVJIBHAI	M	43	ST	IND	1154	0	1154	0.59	0.70
12	NONE OF THE ABOVE				NOTA	2962	0	2962	1.51	1.79

165286

0

165286

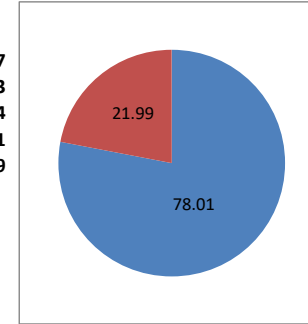
**2014 LOK SABHA ELECTION**

**CONSTITUENCY 1. DAMAN & DIU**

PATEL LALUBHAI BABUBHAI (Winner) 46960  
 KETAN DAHYABHAI PATEL(Second) 37738  
 Winning Margin 9222

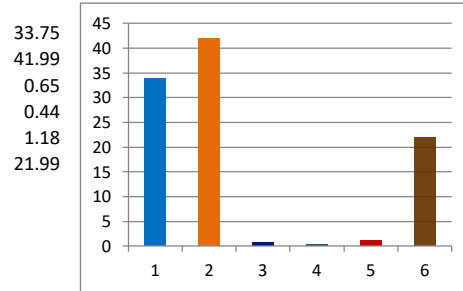
Winning margin as percentage of Polled Votes 10.57  
 Winning margin as percentage of Total Electors 8.25

TOTAL ELECTORS 111827  
 VOTES POLLED 87233  
 VOTES NOT POLLED 24594  
 VOTING PERCENTAGE 78.01  
 NON VOTING PERCENTAGE 21.99



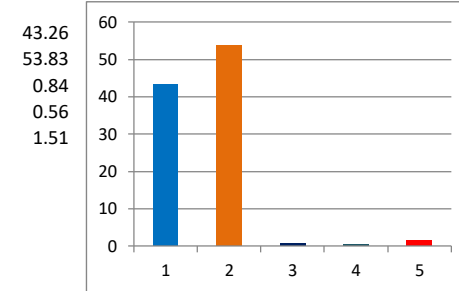
Percentage of votes secured over total electors in the constituency

- 1 INC
- 2 BJP
- 3 AAP
- 4 OTHER PARTIES
- 5 IND
- 6 NON VOTING %



Percentage of votes secured over total votes polled in the constituency

- 1 INC
- 2 BJP
- 3 AAP
- 4 OTHER PARTIES
- 5 IND



(TOTAL ELECTORS

111827  
 VOTES SECURED

% of votes secured

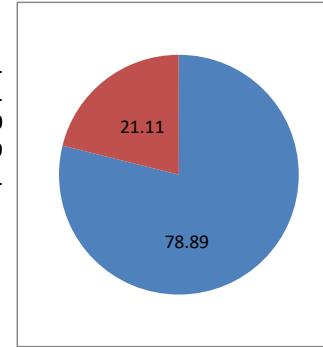
SL NO	CANDIDATE NAME	SEX	AGE	CATEGORY	PARTY	VOTES SECURED		TOTAL	Over total electors in constituency	Over total votes polled in constituency
						GENERAL	POSTAL			
1	KETAN DAHYABHAI PATEL	M	39	GEN	INC	37737	1	37738	33.75	43.26
2	PATEL LALUBHAI BABUBHAI	M	58	GEN	BJP	46956	4	46960	41.99	53.83
3	BHAVESH PATEL	M	25	GEN	BSP	490	0	490	0.44	0.56
4	KESSUR GOAN	M	45	GEN	AAAP	729	0	729	0.65	0.84
5	NONE OF THE ABOVE				NOTA	1316	0	1316	1.18	1.51
						87228	5	87233		

**2014 LOK SABHA ELECTION**

**CONSTITUENCY 2 NORTH GOA**

SHRIPAD YESSO NAIK(Winner)	<b>237903</b>
RAVI NAIK (Second)	<b>132304</b>
Winning Margin	<b>105599</b>

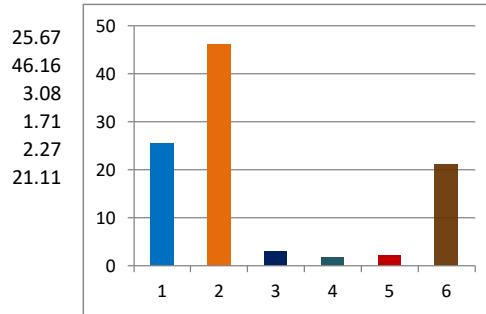
TOTAL ELECTORS	<b>515441</b>
VOTES POLLED	<b>406631</b>
VOTES NOT POLLED	<b>108810</b>
VOTING PERCENTAGE	<b>78.89</b>
NON VOTING PERCENTAGE	<b>21.11</b>



Winning margin as percentage of Polled Votes	25.97
Winning margin as percentage of Total Electors	20.49

Percentage of votes secured over total electors in the constituency

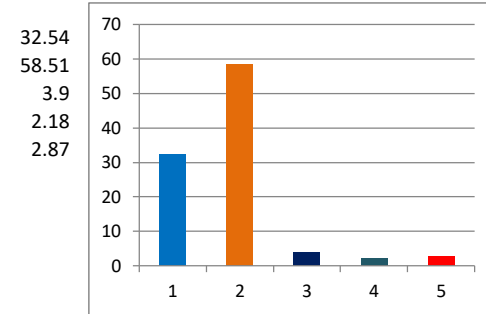
- 1 INC
- 2 BJP
- 3 AAAP
- 4 OTHER PARTIES
- 5 IND
- 6 NON VOTING %



(TOTAL ELECTORS

Percentage of votes secured over total votes polled in the constituency

- 1 INC
- 2 BJP
- 3 AAAP
- 4 OTHER PARTIES
- 5 IND



% of votes secured

515441  
VOTES SECURED

Over total electors in constituency

Over total votes polled in constituency

SL NO	CANDIDATE NAME	SEX	AGE	CATEGORY	PARTY	GENERAL	POSTAL	TOTAL	<u>Over total electors in constituency</u>	<u>Over total votes polled in constituency</u>
1	RAVI NAIK	M	67	GEN	INC	131904	400	132304	25.67	32.54
2	SHRIPAD YESSO NAIK	M	61	GEN	BJP	236926	977	237903	46.16	58.51
3	ADV. SUHAS NAIK	M	47	GEN	CPI	5638	2	5640	1.09	1.39
4	DR. DATTARAM DESAI	M	61	GEN	AAAP	15830	27	15857	3.08	3.90
5	RAJU DSOUZA	M	44	GEN	SJP( R )	3216	0	3216	0.62	0.79
6	DAYANAND G. NARVEKAR	M	44	GEN	IND	4117	11	4128	0.80	1.02
7	MITTU MUJAWAR	M	38	GEN	IND	1813	0	1813	0.35	0.45
8	NONE OF THE ABOVE				NOTA	5746	24	5770	1.12	1.42
						405190	1441	406631		



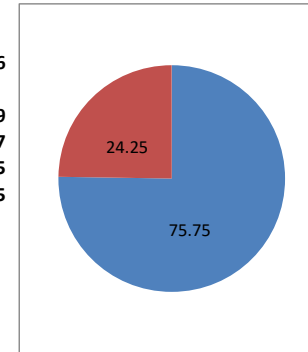
**2014 LOK SABHA ELECTION**

**CONSTITUENCY 2 SOUTH GOA**

ADV. NARENDRA KESHAV  
SAWAIKAR(Winner) **198776**  
ALEIXO REGINALDO LOURENCO(Second) **166446**  
Winning Margin **32330**

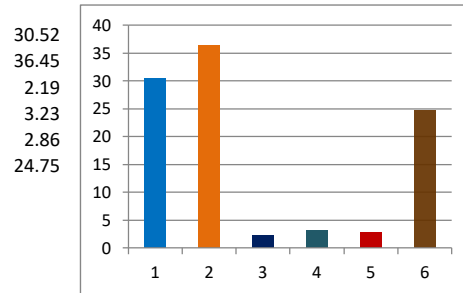
Winning margin as percentage of  
Polled Votes **7.88**  
Winning margin as percentage of  
Total Electors **5.93**

TOTAL ELECTORS **545336**  
VOTES POLLED **410369**  
VOTES NOT POLLED **134967**  
VOTING PERCENTAGE **75.25**  
NON VOTING PERCENTAGE **24.75**



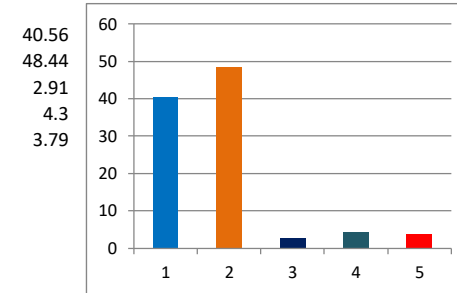
Percentage of votes secured over total electors in the constituency

- 1 INC
- 2 BJP
- 3 AITC
- 4 OTHER PARTIES
- 5 IND
- 6 NON VOTING %



Percentage of votes secured over total votes polled in the constituency

- 1 INC
- 2 BJP
- 3 AITC
- 4 OTHER PARTIES
- 5 IND



(TOTAL ELECTORS

545336

% of votes secured

VOTES SECURED

Over total electors in constituency

Over total votes polled in constituency

SL NO	CANDIDATE NAME	SEX	AGE	CATEGORY	PARTY	GENERAL	POSTAL	TOTAL	<u>Over total electors in constituency</u>	<u>Over total votes polled in constituency</u>
1	ALEIXO REGINALDO LOURENCO	M	45	GEN	INC	166226	220	166446	30.52	40.56
2	ADV. NARENDRA KESHAV SAWAIKAR	M	47	GEN	BJP	198176	600	198776	36.45	48.44
3	ADV. RAJU MANGESHKAR	M	58	GEN	CPI	4435	2	4437	0.81	1.08
4	CLIFFTON DE SOUZA	M	33	GEN	BMUF	665	1	666	0.12	0.16
5	CHURCHILL ALEMAO	M	64	GEN	AITC	11932	9	11941	2.19	2.91
6	ADV. JAWAHAR DIAS	M	58	GEN	GOA	530	0	530	0.10	0.13
7	SAVIO OLIVER RODRIGUES	M	37	GEN	GSRP	783	0	783	0.14	0.19
8	SWATI S. KERKAR	F	39	GEN	AAAP	11227	19	11246	2.06	2.74
9	GOVIND SHEPU GAUDE	M	42	GEN	IND	7105	47	7152	1.31	1.74
10	BALKRISHNA SALGAONKAR	M	43	GEN	IND	682	1	683	0.13	0.17
11	VENUS HABIB	F	62	GEN	IND	790	0	790	0.14	0.19
12	SHALOM MATHEW FRANCISCO	M	33	GEN	IND	2586	0	2586	0.47	0.63
13	SARDINHA				IND	4320	13	4333	0.79	1.06
	NONE OF THE ABOVE				NOTA					
						409457	912	410369		

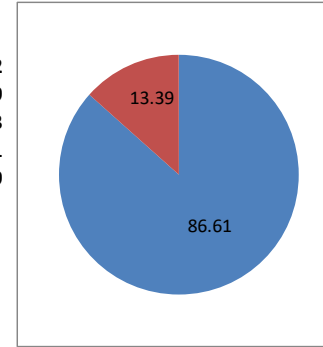
**2014 LOK SABHA ELECTION**

**CONSTITUENCY 1. LAKSHADWEEP**

MOHAMMED FAISAL P.P.(Winner)	21665
HAMDULLAH SAYEED (Second)	20130
Winning Margin	1535

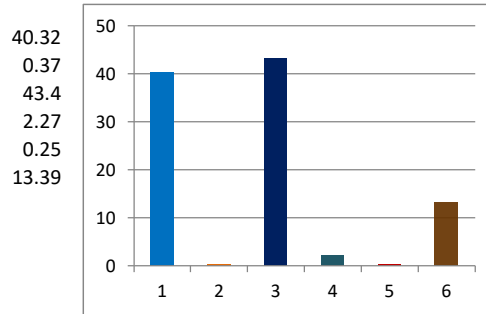
Winning margin as percentage of Polled Votes	3.55
Winning margin as percentage of Total Electors	3.07

TOTAL ELECTORS	49922
VOTES POLLED	43239
VOTES NOT POLLED	6683
VOTING PERCENTAGE	86.61
NON VOTING PERCENTAGE	13.39



Percentage of votes secured over total electors in the constituency

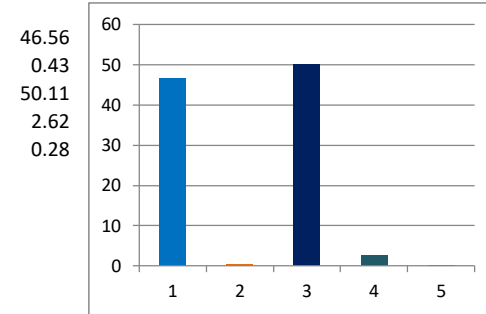
- 1 INC
- 2 BJP
- 3 NCP
- 4 OTHER PARTIES
- 5 IND
- 6 NON VOTING %



(TOTAL ELECTORS

Percentage of votes secured over total votes polled in the constituency

- 1 INC
- 2 BJP
- 3 NCP
- 4 OTHER PARTIES
- 5 IND



49922  
VOTES SECURED

% of votes secured

SL NO	CANDIDATE NAME	SEX	AGE	CATEGORY	PARTY	49922		TOTAL	Over total electors in constituency	Over total votes polled in constituency
						GENERAL	POSTAL			
1	DR. ABDUL MUNEER	M	41	ST	CPM	465	0	465	0.93	1.08
2	NAJMUDHEEN C.T.	M	38	ST	CPI	181	0	181	0.36	0.42
3	MOHAMMED FAIZAL P.P.	M	38	ST	NCP	21665	0	21665	43.40	50.11
4	M.P.SAYED MOHAMMED KOYA	M	60	ST	BJP	187	0	187	0.37	0.43
5	HAMDULLAH SAYEED	M	31	ST	INC	20130	0	20130	40.32	46.56
6	KOMALAM KOYA	M	37	ST	SP	488	0	488	0.98	1.13
7	NONE OF THE ABOVE				NOTA	123	0	123	0.25	0.28
						43239	0	43239		

**Analysis of General Election 2014**  
Gujarat Constituencies

District	Assembly No.	Constituencies	Voting			Winner's Party	Winner's Votes	Winning Margin	Second's Party	Second's Votes	Third's Party	Third's Votes	Is Third's Votes more than Winning Margin	Third Party
			Electors	Votes Polled	Percentage									
		1 KACHCHH	1533782	946240	61.69	BJP	562855	254482	308373	INC		21230		BSP
		2 BANASKANTHA	1515711	886634	58.50	BJP	507856	202334	305522	INC		17397		NOTA
		3 PATAN	1628641	955799	58.69	BJP	518538	138719	379819	INC		12061		NOTA
		4 MAHESANA	1498219	1004258	67.03	BJP	580250	208891	371359	INC		11615		NOTA
		5 SABARKANTHA	1615840	1094002	67.70	BJP	552205	84455	467750	INC		22334		NOTA
		6 GANDHINAGAR	1733972	1135495	65.49	BJP	773539	483121	290418	INC		19966		AAAP
		7 AHMEDABAD EAST	1601832	985525	61.52	BJP	633582	326633	306949	INC		14358		NOTA
		8 AHMEDABAD WEST	1534400	964609	62.87	BJP	617104	320311	296793	INC		17332		AAAP
		9 SUREDRANAGAR	1656657	944677	57.02	BJP	529003	202907	326096	INC		14515		IND
		10 RAJKOT	1655717	1057069	63.84	BJP	621524	246428	375096	INC		18249		NOTA
		11 PORBANDAR	1539223	809433	52.59	BJP	508437	267971	240466	NCP		16443		NOTA
		12 JAMNAGAR	1470952	852643	57.97	BJP	484412	175289	309123	INC		8596		IND
		13 JUNAGADH	1485543	941378	63.37	BJP	513179	135832	377347	INC		17022		NOTA
		14 AMRELI	1486286	808816	54.42	BJP	436715	156232	280483	INC		19143		NOTA
		15 BHAVNAGAR	1594531	917402	57.53	BJP	549529	295488	254041	INC		49540		AAAP
		16 ANAND	1496859	970894	64.86	BJP	490829	63426	427403	INC		16872		NOTA
		17 KHEDA	1599476	955906	59.76	BJP	568235	232901	335334	INC		20333		NOTA
		18 PANCHMAHAL	1576667	933461	59.20	BJP	508274	170596	337678	INC		25981		NOTA
		19 DAHOD	1411765	900381	63.78	BJP	511111	230354	280757	INC		32305		NOTA
		20 VADODARA	1638321	1161577	70.90	BJP	845464	570128	275336	INC		18053		NOTA
		21 CHHOTA UDAIPUR	1536305	1100542	71.64	BJP	607916	179729	428187	INC		28815		NOTA
		22 BHARUCH	1417548	1060211	74.79	BJP	548902	153273	395629	INC		49289		JD(U)
		23 BARDOLI	1614106	1206179	74.73	BJP	622769	123884	498885	INC		19991		NOTA
		24 SURAT	1484068	947922	63.87	BJP	718412	533190	185222	INC		18877		AAAP
		25 NAVSARI	1764622	1160747	65.78	BJP	820831	558116	262715	INC		14299		AAAP
		26 VALSAD	1512061	1122203	74.22	BJP	617772	208004	409768	INC		26606		NOTA

## Analysis of General Election 2014

ODISHA Constituencies

District	Assembly No.	Constituencies	Electors	Voting			Winner's Party	Winner's Votes	Winning Margin	Second's Votes	Is Third's Votes more than Winning Margin	Third Party
				Votes Polled	Percentage	Winning Party						
	1	BARGARH	1430717	1123301	78.51	BJD	383230	11178	372052	YES		INC
	2	SUNDARGARH	1410532	1010711	71.65	BJP	340508	18829	321679	YES		INC
	3	SAMBALPUR	1297098	984309	75.89	BJD	358618	30576	328042	YES		INC
	4	KEONJHAR	1346683	1083869	80.48	BJD	434471	157317	277154	YES		INC
	5	MAYURBHANJ	1327555	1053399	79.35	BJD	393779	122866	270913	YES		JMM
	6	BALASORE	1366218	1049450	76.81	BJD	433768	141825	291943	YES		INC
	7	BHADRAK	1469498	1081339	73.59	BJD	502338	179359	322979	YES		BJP
	8	JAJPUR	1303733	980435	75.20	BJD	541349	320271	221078			BJP
	9	DHENKANAL	1363471	1042101	76.43	BJD	453277	137340	315937	YES		INC
	10	BOLANGIR	1563025	1170405	74.88	BJD	453519	104299	349220	YES		INC
	11	KALAHANDI	1474135	1117536	75.81	BJD	370871	56347	314524	YES		INC
	12	NABARANGPUR	1297210	1022172	78.80	BJD	373887	2042	371845	YES		BJP
	13	KANDHAMAL	1143602	839415	73.40	BJD	421458	181017	240441			BJP
	14	CUTTACK	1371617	978604	71.35	BJD	526085	306762	219323			BJP
	15	KENDRAPARA	1555444	1137607	73.14	BJD	600023	209300	390723			BJP
	16	JAGATSINGHPUR	1499673	1131932	75.48	BJD	624492	276394	348098			BJP
	17	PURI	1404581	1039389	74.00	BJD	523161	263361	259800			BJP
	18	BHUBANESHWAR	1527768	891822	58.37	BJD	439252	189477	249775			INC
	19	ASKA	1408780	896281	63.62	BJD	541473	311997	229476			BJP
	20	BERHAMPUR	1334268	905362	67.85	BJD	398107	127720	270387	YES		BJP
	21	KORAPUT	1300437	989444	76.09	BJD	395109	19328	375781	YES		BJP

**Analysis of General Election 2014**  
**PUNJAB Constituencies**

<u>District</u>	<u>Assembly No.</u>	<u>Constituencies</u>	<u>Voting</u>							<u>Is Third's Votes more than Winning Margin</u>	<u>Third Party</u>		
			<u>Electors</u>	<u>Votes Polled</u>	<u>Percentage</u>	<u>Winning Party</u>	<u>Winner's Votes</u>	<u>Winning Margin</u>	<u>Second's Votes</u>			<u>Second Party</u>	<u>Third's Votes</u>
	1	GURDASPUR	1500337	1042699	69.50	BJP	482255	136065	346190	INC	173376	YES	AAAP
	2	AMRITSAR	1477262	1007196	68.18	INC	482876	102770	380106	BJP	82633		AAAP
	3	KHADOOR SAHIB	1563409	1040518	66.55	SAD	467332	100569	366763	INC	144521	YES	AAAP
	4	JALANDHAR	1551497	1040762	67.08	INC	380479	70981	309498	SAD	254121	YES	AAAP
	5	HOSHIARPUR	1485286	961297	64.72	BJP	346643	13582	333061	INC	213388	YES	AAAP
	6	ANANDPUR SAHIB	1564721	1086563	69.44	SAD	347394	23697	323697	INC	306008	YES	AAAP
	7	LUDHIANA	1561201	1100457	70.49	INC	300459	19709	280750	AAAP	256590	YES	SAD
	8	FATEHGARH SAHIB	1396957	1030954	73.80	AAAP	367293	54144	313149	INC	312815	YES	SAD
	9	FARIDKOT	1455075	1032107	70.93	AAAP	450751	172516	278235	SAD	251222	YES	INC
	10	FIROZPUR	1522111	1105412	72.62	SAD	487932	31420	456512	INC	113412	YES	AAAP
	11	BATHINDA	1525289	1176767	77.15	SAD	514727	19395	495332	INC	87901	YES	AAAP
	12	SANGRUR	1424743	1099467	77.17	AAAP	533237	211721	321516	SAD	181410		INC
	13	PATIALA	1580273	1120933	70.93	AAAP	365671	20942	344729	INC	340109	YES	SAD

**Analysis of General Election 2014**  
**RAJASTHAN Constituencies**

District	Assembly No.	Constituencies	Voting						Is Third's Votes more than Winning Margin	Third Party			
			Electors	Votes Polled	Percentage	Winning Party	Winner's Votes	Winning Margin			Second's Votes	Second Party	Third's Votes
	1	GANGANAGAR	1718414	1256806	73.14	BJP	656130	289741	366389	INC	106585	NO	NUZP
	2	BIKANER	1592355	929751	58.39	BJP	584932	308079	276853	INC	16839	NO	NUZP
	3	CHURU	1753825	1131104	64.49	BJP	595756	294739	301017	BSP	176912	NO	INC
	4	JHUNJHUNU	1697470	1006465	59.29	BJP	488182	233835	254347	INC	206288	NO	IND
	5	SIKAR	1769882	1065750	60.22	BJP	499428	239196	260232	INC	188541	NO	IND
	6	JAIPUR RURAL	1700307	1013691	59.62	BJP	632930	332896	300034	INC	31617	NO	NPEP
	7	JAIPUR	1957820	1296806	66.24	BJP	863358	539345	324013	INC	55118	NO	AAAP
	8	ALWAR	1626442	1062305	65.31	BJP	642278	283895	358383	INC	19483	NO	BSP
	9	BHARATPUR	1690705	962432	56.92	BJP	579825	245468	334357	INC	22090	NO	BSP
	10	KARAUALI - DHOLPUR	1549468	845941	54.60	BJP	402407	27216	375191	INC	25150	NO	BSP
	11	DAUSA	1524100	930492	61.05	BJP	315059	45404	269655	NPEP	181272	YES	INC
	12	TONK - SAWAI - MADHOPU	1710775	1043638	61.00	BJP	548537	135506	413031	INC	14604	NO	NPEP
	13	AJMER	1683261	1156314	68.69	BJP	637874	171983	465891	INC	12546	NO	NOTA
	14	NAGAU	1678660	1004019	59.81	BJP	414791	75218	339573	INC	159980	YES	IND
	15	PALI	1902094	1095587	57.60	BJP	711772	399039	312733	INC	17703	NO	NOTA
	16	JODHPUR	1727791	1078598	62.43	BJP	713515	410051	303464	INC	15085	NO	NOTA
	17	BARMER	1680152	1219119	72.56	BJP	488747	87461	401286	IND	220881	YES	INC
	18	JALORE	1824968	1087272	59.58	BJP	580508	381145	199363	INC	175344	NO	IND
	19	UDAIPUR	1817940	1193202	65.63	BJP	660373	236762	423611	INC	33743	NO	CPI
	20	BANSWARA	1698244	1171188	68.96	BJP	577433	91916	485517	INC	34404	NO	NOTA
	21	CHITTORGARH	1819506	1172629	64.45	BJP	703236	316857	386379	INC	21593	NO	CPI
	22	RAJSAMAND	1701194	982119	57.73	BJP	644794	395705	249089	INC	17182	NO	NOTA
	23	BHILWARA	1754901	1104090	62.91	BJP	630317	246264	384053	INC	19698	NO	NOTA
	24	KOTA	1744539	1154960	66.20	BJP	644822	200782	444040	INC	16981	NO	AAAP
	25	JHALAWAR - BARAN	1669844	1146364	68.65	BJP	676102	281546	394556	INC	23587	NO	BSP

**Analysis of General Election 2014**  
West Bengal Constituencies

District	Assembly No.	Constituencies	Voting						Is Third's Votes more than Winning Margin	Third Party			
			Electors	Votes Polled	Percentage	Winning Party	Winner's Votes	Winning Margin			Second's Votes	Second Party	Third's Votes
	1	COOCH BEHAR	1613403	1332409	82.58	AITC	526499	87107	439392	AIFB	217653	YES	BJP
	2	ALIPURDUARS	1470911	1223566	83.18	AITC	362453	21397	341056	RSP	335857	YES	BJP
	3	JALPAIGURI	1531469	1302117	85.02	AITC	494773	69606	425167	CPM	221593	YES	BJP
	4	DARJEELING	1437154	1142009	79.46	BJP	488257	197239	291018	AITC	167186		CPM
	5	RANIGANJ	1387526	1108193	79.87	CPM	317515	1634	315881	INC	203131	YES	BJP
	6	BALURGHAT	1254497	1063053	84.74	AITC	409641	106964	302677	RSP	223014	YES	BJP
	7	MALDHA UTTAR	1425428	1162985	81.59	INC	388609	65705	322904	CPM	197313	YES	AITC
	8	MALDHA DAKSHIN	1347143	1092407	81.09	INC	380291	164111	216180	BJP	209480	YES	CPM
	9	JANGIPUR	1391656	1119084	80.41	INC	378201	8161	370040	CPM	207455	YES	AITC
	10	BAHARAMPUR	1453783	1154587	79.42	INC	583549	356567	226982	AITC	225699		RSP
	11	MURSHIDABAD	1512098	1287763	85.16	CPM	426947	18453	408494	INC	289027	YES	AITC
	12	KRISHNANAGAR	1476783	1247914	84.50	AITC	438789	71255	367534	CPM	329387	YES	BJP
	13	RANAGHAT	1602849	1353196	84.42	AITC	590451	201767	388684	CPM	233670	YES	BJP
	14	BANGAON	1540713	1283688	83.32	AITC	551213	146601	404612	CPM	244783	YES	BJP
	15	BARRACKPUR	1287222	1051130	81.66	AITC	479206	206773	272433	CPM	230401	YES	BJP
	16	DUM DUM	1405981	1132644	80.56	AITC	483244	154934	328310	CPM	254819	YES	BJP
	17	BARASAT	1512792	1269331	83.91	AITC	525387	173141	352246	AIFB	296608	YES	BJP
	18	BASIRHAT	1490596	1273771	85.45	AITC	492326	109659	382667	CPI	233887	YES	BJP
	19	JOYNAGAR	1458724	1189048	81.51	AITC	494746	108384	386362	RSP	117454	YES	SUCI
	20	MATHURAPUR	1488785	1270985	85.37	AITC	630262	138768	491494	CPM	66538		BJP
	21	DIAMOND HARBOUR	1555914	1261296	81.06	AITC	508481	71298	437183	CPM	200858	YES	BJP
	22	JADAVPUR	1595746	1272362	79.73	AITC	584244	125203	459041	CPM	155511	YES	BJP
	23	KOLKATA DAKSHIN	1685296	1167986	69.30	AITC	431715	136339	295376	BJP	278414	YES	CPM
	24	KOLKATA UTTAR	1433985	955778	66.65	AITC	343687	96226	247461	BJP	196053	YES	CPM
	25	HOWRAH	1505099	1125399	74.77	AITC	488461	196956	291505	CPM	248120	YES	BJP
	26	ULUBERIA	1448632	1186027	81.87	AITC	570785	201222	369563	CPM	137137		BJP
	27	SRRAMPUR	1624038	1290433	79.46	AITC	514933	152526	362407	CPM	287712	YES	BJP
	28	HOOGLY	1630042	1348870	82.75	AITC	614312	189084	425228	CPM	221271	YES	BJP
	29	ARAMBAGH	1600293	1361934	85.11	AITC	748764	346845	401919	CPM	158480		BJP
	30	TAMLUK	1527273	1337684	87.59	AITC	716928	246481	470447	CPM	86265		BJP
	31	KANTHI	1490409	1290811	86.61	AITC	676749	229490	447259	CPM	111082		BJP
	32	GHATAL	1610489	1366909	84.88	AITC	685696	260891	424805	CPI	123128		INC
	33	JHARGRAM	1475112	1257613	85.26	AITC	674504	347883	326621	CPM	122459		BJP
	34	MEDINAIPUR	1499673	1260748	84.07	AITC	580441	185128	395313	CPI	180071		BJP
	35	PURULIA	1471933	1204675	81.84	AITC	468277	153877	314400	AIFB	257923	YES	INC
	36	BANKURA	1503812	1236319	82.21	AITC	483455	98506	384949	CPM	251183	YES	BJP
	37	BISHNUPUR	1466921	1272070	86.72	AITC	578870	149685	429185	CPM	179530	YES	BJP
	38	BARDHAMAN PURBA	1532244	1320822	86.20	AITC	574560	114379	460181	CPM	170828	YES	BJP
	39	BURDWAN DURGAPUR	1583495	1331242	84.07	AITC	554521	107331	447190	CPM	237205	YES	BJP
	40	ASANSOL	1469684	1142395	77.73	BJP	419983	70480	349503	AITC	255829	YES	CPM
	41	BOLPUR	1538421	1304756	84.81	AITC	630693	236112	394581	CPM	197474		BJP
	42	BIRBHUM	1495089	1275819	85.33	AITC	460568	67263	393305	CPM	235753	YES	BJP

## Analysis of General Election 2014

*Chattisgarh Constituencies*

District	Assembly No.	Constituencies	Voting			Winner's Votes	Winning Margin	Second's Votes	Second Party	Third's Votes	Is Third's Votes more than Winning Margin	Third Party	
			Electors	Votes Polled	Percentage								Winning Party
	1	SARGUJA	1523022	1187321	77.96	BJP	585336	147236	438100	INC	31104	NOTA	
	2	RAIGARH	1626949	1246186	76.60	BJP	662478	216750	445728	INC	28480	NOTA	
	3	JANJIR-CHAMPA	1744201	1073347	61.54	BJP	518909	174961	343948	INC	125617	BSP	
	4	KORBA	1423729	1052720	73.94	BJP	439002	4265	434737	INC	52753	YES	GGP
	5	BILASPUR	1729229	1090457	63.06	BJP	561387	176436	384951	INC	26340	BSP	
	6	RAJNANDGAON	1591373	1178296	74.04	BJP	643473	235911	407562	INC	32384	NOTA	
	7	DURG	1858922	1258342	67.69	INC	570687	16848	553839	BJP	17455	YES	AAAP
	8	RAIPUR	1904460	1250845	65.68	BJP	654922	171646	483276	INC	15139	AAAP	
	9	MAHASAMUND	1516177	1131209	74.61	BJP	503514	1217	502297	INC	20255	YES	IND
	10	BASTAR	1298083	769913	59.31	BJP	385829	124359	261470	INC	38772	NOTA	
	11	KANKER	1448375	1016943	70.21	BJP	465215	35158	430057	INC	31917	NOTA	



## Analysis of General Election 2014

Haryana Constituencies

District	Assembly No.	Constituencies	Voting							Is Third's Votes more than Winning Margin	Third Party		
			Electors	Polled	Percentage	Winning Party	Winner's Votes	Winning Margin	Second's Votes			Second Party	Third's Votes
	1	AMBALA	1692424	1218995	72.03	BJP	612121	340074	272047	INC	129571		INLD
	2	KURUKSHETRA	1498459	1135892	75.80	BJP	418112	129736	288376	INLD	287722	YES	INC
	3	SIRSA	1660557	1279105	77.03	INLD	506370	115736	390634	INC	241067	YES	HUCBL
	4	HISAR	1517606	1155914	76.17	INLD	494478	31847	462631	HUCBL	102509	YES	INC
	5	KARNAL	1684321	1193500	70.86	BJP	594817	360147	234670	INC	187902		INLD
	6	SONIPAT	1417188	985638	69.55	BJP	347203	77414	269789	INC	264404	YES	INLD
	7	ROHTAK	1567508	1044331	66.62	INC	490063	170627	319436	BJP	151120		INLD
	8	BHIWANI-MAHENDRAGARH	1473912	1030431	69.91	BJP	404542	129394	275148	INLD	268115	YES	INC
	9	GURGAON	1844908	1320620	71.58	BJP	644780	274722	370058	INLD	133713		INC
	10	FARIDABAD	1740352	1130725	64.97	BJP	652516	466873	185643	INC	132472		INLD

## Analysis of General Election 2014

Himachal Pradesh Constituencies

District	Assembly No.	Constituencies	Electors	Voting			Winner's Votes	Winning Margin	Second's Votes	Second Party	Third's Votes	Is Third's Votes more than Winning Margin	Third Party
				Votes Polled	Percenta ge	Winning Party							
	1	KANGRA	1258601	799445	63.52	BJP	455163	169072	286091	INC	24430		AAAP
	2	MANDI	1150408	726094	63.12	BJP	362824	39856	322968	INC	13965		CPM
	3	HAMIRPUR	1247699	835205	66.94	BJP	448035	98403	349632	INC	15329		AAAP
	4	SHIMLA	1153363	737756	63.97	BJP	385973	84187	301786	INC	14233		AAAP

## Analysis of General Election 2014

*Jharkhand Constituencies*

District	Assembly No.	Constituencies	Voting							Is Third's Votes more than Winning Margin	Third Party		
			Electors	Votes Polled	Percentage	Winning Party	Winner's Votes	Winning Margin	Second's Votes			Second Party	Third's Votes
	1	RAJMAHAL	1353467	951563	70.31	JMM	379507	41337	338170	BJP	97374	YES	JVM
	2	DUMKA	1273049	903060	70.94	JMM	335815	39030	296785	BJP	158122	YES	JVM
	3	GODDA	1590772	1049442	65.97	BJP	380500	60682	319818	INC	193506	YES	JVM
	4	CHATRA	1312562	712971	54.32	BJP	295862	178027	117835	INC	104176		JVM
	5	KODARMA	1639645	1024906	62.51	BJP	365410	98654	266756	CPI(M)(L)	160638	YES	JVM
	6	GIRIDH	1511644	969997	64.17	BJP	391913	40313	351600	JMM	57380	YES	JVM
	7	DHANBAD	1890021	1143902	60.52	BJP	543491	292954	250537	INC	110185		MCO
	8	RANCHI	1648459	1049783	63.68	BJP	448729	199303	249426	INC	142560		AJSUP
	9	JAMSHEDPUR	1581665	1049140	66.33	BJP	464153	99876	364277	JVM	138109	YES	JMM
	10	SINGHBHUM	1152632	795286	69.00	BJP	303131	87524	215607	JBSP	111796	YES	INC
	11	KHUNTI	1111856	736955	66.28	BJP	269185	92248	176937	JKP	147017	YES	INC
	12	LOHARDAGA	1119144	651460	58.21	BJP	226666	6489	220177	INC	118355	YES	AITC
	13	PALAMAU	1645957	977323	59.38	BJP	476513	263942	212571	RJD	156832		JVM
	14	HAZARIBAGH	1518923	967152	63.67	BJP	406931	159128	247803	INC	156186		AJSUP



## Analysis of General Election 2014

*Assam Constituencies*

District	LOK SABHA	Constituencies	Voting										Third Party
			Electors	Votes Polled	Percentage	Winning Party	Winner's Votes	Winning Margin	Second's Votes	Second Party	Third's Votes	Is Third's Votes more than Winning Margin	
		1 KARIMGANJ	1165997	886920	76.07	AUDF	362866	102094	260772	BJP	226562	YES	INC
		2 SILCHAR	1060175	799830	75.44	INC	336451	35241	301210	BJP	85530	YES	AUDF
		3 AUTONOMOUS DISTRICT	702230	543280	77.36	INC	213152	24095	189057	BJP	108299	YES	IND
		4 DHUBRI	1550166	1369624	88.35	AUDF	592569	229730	362839	INC	298985	YES	BJP
		5 KOKRAJHAR	1505472	1223869	81.29	IND	634428	355779	278649	IND	243759	YES	BOPF
		6 BARPETA	1430188	1205863	84.31	AUDF	394702	42341	352361	BJP	277802	YES	INC
		7 GAUHATI	1922270	1511729	78.64	BJP	764985	315784	449201	INC	137254		AUDF
		8 MANGALDOI	1515676	1233237	81.37	BJP	486357	22884	463473	INC	86347	YES	BOPF
		9 TEZPUR	1259568	980688	77.86	BJP	446511	86020	360491	INC	62730		IND
		10 NOWGONG	1523881	1230074	80.72	BJP	494146	143559	350587	INC	314012	YES	AUDF
		11 KALIABOR	1457219	1166490	80.05	INC	443315	93874	349441	BJP	231441	YES	AUDF
		12 JORHAT	1189486	931336	78.30	BJP	456420	102420	354000	INC	46626		AGP
		13 DIBRUGARH	1124305	890968	79.25	BJP	494364	185347	309017	INC	45710		AGP
		14 LAKHIMPUR	1431080	1111975	77.70	BJP	612543	292138	320405	INC	81753		AGP

## Analysis of General Election 2014

*BIHAR Constituencies*

District	Assembly No.	Constituencies	Voting						Is Third's Votes more than Winning Margin	Third Party			
			Electors	Votes Polled	Percentage	Winning Party	Winner's Votes	Winning Margin			Second's Votes	Second Party	Third's Votes
	1	VALMIKI NAGAR	1456598	900127	61.80	BJP	364013	117795	246218	INC	81612		JD(U)
	2	PASCHIM CHAMPARAN	1413148	854800	60.49	BJP	371232	110254	260978	JD(U)	121800	YES	RJD
	3	PURVI CHAMPARAN	1439253	822671	57.16	BJP	400452	192163	208289	RJD	128604		JD(U)
	4	SHEOHAR	1485801	842894	56.73	BJP	372506	136239	236267	RJD	79108		JD(U)
	5	SITAMARHI	1574914	900588	57.18	BLSP	411265	147965	263300	RJD	97188		JD(U)
	6	MADHUBANI	1627832	860453	52.86	BJP	358040	20535	337505	RJD	56392	YES	JD(U)
	7	JHANJHARPUR	1668405	941249	56.42	BJP	335481	55408	280073	RJD	183591	YES	JD(U)
	8	SUPAUL	1525583	970528	63.62	INC	332927	59672	273255	JD(U)	249693	YES	BJP
	9	ARARIA	1587332	975811	61.47	RJD	407978	146504	261474	BJP	221769	YES	JD(U)
	10	KISHANGANJ	1438990	928490	64.52	INC	493461	194612	298849	BJP	55822		JD(U)
	11	KATI HAR	1446478	977830	67.60	NCP	431292	114740	316552	BJP	100765		JD(U)
	12	PURNIA	1582626	1017732	64.31	JD(U)	418826	116669	302157	BJP	124344	YES	INC
	13	MADHEPURA	1725693	1034799	59.96	RJD	368937	56209	312728	JD(U)	252534	YES	BJP
	14	DARBHANGA	1495445	828342	55.39	BJP	314949	35043	279906	RJD	104494	YES	JD(U)
	15	MUZAFFARPUR	1551363	948887	61.16	BJP	469295	222422	246873	INC	85140		JD(U)
	16	VAISHALI	1566321	925937	59.12	LJP	305450	99267	206183	RJD	145182	YES	JD(U)
	17	GOPALGANJ	1654838	903583	54.10	BJP	478773	286936	191837	INC	100419		JD(U)
	18	SIWAN	1563860	884005	56.53	BJP	372670	113847	258823	RJD	81006		CPI(M)(L)
	19	MAHARAJGANJ	1642068	846654	51.56	BJP	320753	38415	282338	RJD	149483	YES	JD(U)
	20	SARAN	1538740	863254	56.10	BJP	355120	40948	314172	RJD	107008	YES	JD(U)
	21	HAIJIPUR	1649547	904706	54.85	LJP	455652	225500	230152	INC	95790		JD(U)
	22	UIJARPUR	1426217	858920	60.22	BJP	317352	60469	256883	RJD	119669	YES	JD(U)
	23	SAMASTIPUR	1504451	863199	57.38	LJP	270401	6872	263529	INC	200124	YES	JD(U)
	24	BEGUSARAI	1778759	1077855	60.60	BJP	428227	58335	369892	RJD	192639	YES	CPI(M)(L)
	25	KHAGARIA	1506587	896231	59.49	LJP	313806	76003	237803	RJD	220316	YES	JD(U)
	26	BHAGALPUR	1685339	974016	57.79	RJD	367623	9485	358138	BJP	132256	YES	JD(U)
	27	BANKA	1549456	899353	58.04	RJD	285148	10142	275006	BJP	220708	YES	CPI
	28	MUNGER	1719984	914350	53.16	LJP	352911	109084	243827	JD(U)	182971	YES	RJD
	29	NALANDA	1951967	921761	47.22	JD(U)	321982	9627	312355	LJP	127270	YES	INC
	30	PATNA SAHEB	1946249	882262	45.33	BJP	485905	265805	220100	INC	91024		JD(U)
	31	PATALIPUTRA	1736074	978649	56.37	BJP	383262	40322	342940	RJD	97228	YES	JD(U)
	32	ARRAH	1824515	893213	48.96	BJP	391074	135870	255204	RJD	75962		JD(U)
	33	BUXAR	1640671	888204	54.14	BJP	319012	132338	186674	RJD	184788	YES	BSP
	34	SASARAM	1607747	846788	52.67	BJP	366087	63327	302760	INC	93310	YES	JD(U)
	35	KARAKAT	1580558	789927	49.98	BLSP	338892	105241	233651	RJD	76709		JD(U)
	36	JAHANABAD	1423246	811516	57.02	BLSP	322647	42340	280307	RJD	100851	YES	JD(U)
	37	AURANGABAD	1536153	786274	51.18	BJP	307941	66347	241594	INC	136137	YES	JD(U)
	38	GAYA	1501521	809378	53.90	BJP	326230	115504	210726	RJD	131828	YES	JD(U)
	39	NAWADA	1694895	884441	52.18	BJP	390248	140157	250091	RJD	168217	YES	JD(U)
	40	JAMUI	1550936	775639	50.01	LJP	285354	85947	199407	RJD	198599	YES	JD(U)

## Analysis of General Election 2014

Delhi Constituencies

<u>District</u>	<u>Assembly No.</u>	<u>Constituencies</u>	<u>Voting</u>							<u>Is Third's Votes more than Winning Margin</u>	<u>Third Party</u>		
			<u>Electors</u>	<u>Votes Polled</u>	<u>Percentage</u>	<u>Winning Party</u>	<u>Winner's Votes</u>	<u>Winning Margin</u>	<u>Second's Votes</u>			<u>Second Party</u>	<u>Third's Votes</u>
	1	CHANDNI CHOWK	1447230	981863	67.84	BJP	437938	136320	301618	AAAP	176206	YES	INC
	2	NORTH EAST DELHI	1957708	1317338	67.29	BJP	596125	144084	452041	AAAP	214792	YES	INC
	3	EAST DELHI	1829578	1196336	65.39	BJP	572202	190463	381739	AAAP	203240	YES	INC
	4	NEW DELHI	1490147	969812	65.08	BJP	453350	162708	290642	AAAP	182893	YES	INC
	5	NORTH WEST DELHI	2194343	1356036	61.80	BJP	629860	106802	523058	AAAP	157468	YES	INC
	6	WEST DELHI	2039410	1347971	66.10	BJP	651395	268586	382809	AAAP	193266		INC
	7	SOUTH DELHI	1752748	1102410	62.90	BJP	497980	107000	390980	AAAP	125213	YES	INC

## Analysis of General Election 2014

*Jammu and Kashmir Constituencies*

<u>District</u>	<u>Assembly No.</u>	<u>Constituencies</u>	<u>Electors</u>	<u>Voting</u>			<u>Winner's</u> <u>Party</u>	<u>Winner's</u> <u>Votes</u>	<u>Winning</u> <u>Margin</u>	<u>Second's</u> <u>Votes</u>	<u>Second</u> <u>Party</u>	<u>Third's</u> <u>Votes</u>	<u>Is Third's Votes more than Winning Margin</u>	<u>Third</u> <u>Party</u>
				<u>Votes</u> <u>Polled</u>	<u>Percenta</u> <u>ge</u>	<u>Winning</u> <u>Party</u>								
	1	BARAMULLA	1190766	465992	39.13	JKPDP	175277	29219	146058	JKN	71154	YES	JPC	
	2	SRINAGAR	1207230	312212	25.86	JKPDP	157923	42280	115643	JKN	16050		IND	
	3	ANANTNAG	1301143	375279	28.84	JKPDP	200429	65417	135012	JKN	7340		IND	
	4	LADADK	166763	118029	70.78	BJP	31111	36	31075	IND	28334	YES	IND	
	5	UDHAMPUR	1469072	1041758	70.91	BJP	487369	60976	426393	INC	30461		JKPDP	
	6	JAMMU	1848155	1253593	67.83	BJP	619995	257280	362715	INC	168554		JKPDP	



**Analysis of General Election 2014**  
*Madhya Pradesh Constituencies*

District	Assembly No.	Constituencies	Voting							Is Third's Votes more than Winning Margin	Third Party		
			Electors	Votes Polled	Percentage	Winning Party	Winner's Votes	Winning Margin	Second's Votes			Second Party	Third's Votes
		1 MORENA	1702457	854279	50.18	BJP	375587	133001	242586	BSP	184253	YES	INC
		2 BHIND	1600137	729084	45.56	BJP	404474	159961	244513	INC	33803		BSP
		3 GWALIOR	1876965	990912	52.79	BJP	442796	29699	413097	INC	68196	YES	BSP
		4 GUNA	1605613	976629	60.83	INC	517036	120792	396244	BJP	27412		BSP
		5 SAGAR	1520322	891929	58.67	BJP	482580	120737	361843	INC	19917		BSP
		6 TIKAMGARH	1528863	766321	50.12	BJP	422979	208731	214248	INC	47497		SP
		7 DAMOH	1651614	912080	55.22	BJP	513079	213299	299780	INC	31519		BSP
		8 KHAJURAHO	1702833	874477	51.35	BJP	474966	247490	227476	INC	60368		BSP
		9 SATNA	1458381	913444	62.63	BJP	375288	8688	366600	INC	124602	YES	BSP
		10 REWA	1544719	830002	53.73	BJP	383320	168726	214594	INC	175567	YES	BSP
		11 SIDHI	1736048	989396	56.99	BJP	475678	108046	367632	INC	39387		BSP
		12 SHAHDOL	1561016	968518	62.04	BJP	525419	241301	284118	INC	27819		CPI
		13 JABALPUR	1711621	1002184	58.55	BJP	564609	208639	355970	INC	16008		BSP
		14 MANDLA	1824702	1218518	66.78	BJP	585720	110469	475251	INC	56572		GGP
		15 BALAGHAT	1629741	1113364	68.32	BJP	480594	96041	384553	INC	99392	YES	SP
		16 CHHINDWARA	1402038	1107498	78.99	INC	559755	116537	443218	BJP	25628		GGP
		17 HOSHANGABAD	1568206	1031175	65.76	BJP	669128	389960	279168	INC	18741		NOTA
		18 VIDISHA	1634039	1073473	65.69	BJP	714348	410698	303650	INC	10824		GGP
		19 BHOPAL	1957241	1130182	57.74	BJP	714178	370696	343482	INC	21298		AAAP
		20 RAJGARH	1578757	1010724	64.02	BJP	596727	228737	367990	INC	13864		BSP
		21 DEWAS	1617111	1143970	70.74	BJP	665646	260313	405333	INC	17238		BSP
		22 UJJAIN	1525481	1016405	66.63	BJP	641101	309663	331438	INC	12287		NOTA
		23 MANDSOUR	1626556	1161349	71.40	BJP	698335	303649	394686	INC	10183		AAAP
		24 RATLAM	1702576	1082690	63.59	BJP	545980	108457	437523	INC	30364		NOTA
		25 DHAR	1668441	1076816	64.54	BJP	558387	104328	454059	INC	15437		NOTA
		26 INDORE	2115303	1316817	62.25	BJP	454972	66901	388071	INC	35169		AAAP
		27 KHARGONE	1703272	1152525	67.67	BJP	649354	257879	391475	INC	25930		CPI
		28 KHANDWA	1759417	1257327	71.46	BJP	717357	259714	457643	INC	17149		NOTA
		29 BETUL	1607831	1047719	65.16	BJP	643651	328614	315037	INC	26726		NOTA

## Analysis of General Election 2014

TAMIL NADU Constituencies

District	Assembly No.	Constituencies	Voting			Winner's Party	Winner's Votes	Winning Margin	Second's Votes	Second Party	Third's Votes	Is Third's Votes more than Winning Margin	Third Party
			Electors	Votes Polled	Percenta ge								
		1 THIRUVALLUR	1702833	1254440	73.67	ADMK	628499	323430	305069	VCK	204734		DMDK
		2 CHENNAI NORTH	1422392	910114	63.98	ADMK	406704	99704	307000	DMK	86989		DMDK
		3 CHENNAI SOUTH	1795776	1071409	59.66	ADMK	434540	135575	298965	DMK	258262	YES	BJP
		4 CHENNAI CENTRAL	1328038	814894	61.36	ADMK	333296	45841	287455	DMK	114798	YES	DMDK
		5 SRIPERUMBUDUR	1946503	1286647	66.10	ADMK	545820	102646	443174	DMK	187094	YES	MDMK
		6 KANCHEEPURAM	1480123	1128399	76.24	ADMK	499395	146866	352529	DMK	207080	YES	MDMK
		7 ARAKKONAM	1401813	1089052	77.69	ADMK	493534	240766	252768	DMK	233762		PMK
		8 VELLORE	1312259	974770	74.28	ADMK	383719	59393	324326	BJP	205896	YES	IUML
		9 KRISHNAGIRI	1379957	1068391	77.42	ADMK	480491	206591	273900	DMK	224963	YES	PMK
		10 DHARMAPURI	1358273	1101345	81.08	PMK	468194	77146	391048	ADMK	180297	YES	DMK
		11 TIRUVANNAMALAI	1352966	1067447	78.90	ADMK	500751	168606	332145	DMK	157954		PMK
		12 ARANI	1369668	1096046	80.02	ADMK	502721	243844	258877	DMK	253332	YES	PMK
		13 VILUPPURAM	1387007	1067641	76.97	ADMK	482704	193367	289337	DMK	209663	YES	DMDK
		14 KAILAKURICHI	1412499	1107241	78.39	ADMK	533383	223507	309876	DMK	164183		DMDK
		15 SALEM	1498350	1150296	76.77	ADMK	556546	267610	288936	DMK	201265		DMDK
		16 NAMAKKAL	1329552	1058755	79.63	ADMK	563272	294374	268898	DMK	146882		DMDK
		17 ERODE	1321399	1008582	76.33	ADMK	466995	211563	255432	MDMK	217260	YES	DMK
		18 TIRUPPUR	1375589	1050190	76.34	ADMK	442778	179315	263463	DMDK	205411	YES	DMK
		19 NILGIRIS	1269173	933076	73.52	ADMK	463700	104940	358760	DMK	46559		NOTA
		20 COIMBATORE	1720221	1176620	68.40	ADMK	431717	42016	389701	BJP	217083	YES	DMK
		21 POLLACHI	1381505	1012667	73.30	ADMK	417092	140974	276118	BJP	251829	YES	DMK
		22 DINDIGUL	1400531	1083364	77.35	ADMK	510462	127845	382617	DMK	93794		DMDK
		23 KARUR	1298322	1046534	80.61	ADMK	540722	195247	345475	DMK	76560		DMDK
		24 TIRUCHIRAPPALI	1387140	988250	71.24	ADMK	458478	150476	308002	DMK	94785		DMDK
		25 PERAMBALUR	1285576	1030826	80.18	ADMK	462693	213048	249645	DMK	238887	YES	BJP
		26 CUDDALORE	1247908	984538	78.90	ADMK	481429	203125	278304	DMK	147606		DMDK
		27 CHIDAMBARAM	1366190	1088423	79.67	ADMK	429536	128495	301041	VCK	279016	YES	PMK
		28 MAYILADURAI	1350318	1025538	75.95	ADMK	513729	277050	236679	MAMAK	144085		PMK
		29 NAGAPATTINAM	1210626	942202	77.83	ADMK	434174	106079	328095	DMK	90313		CPI
		30 THANJAVUR	1340050	1012258	75.54	ADMK	510307	144119	366188	DMK	58521		BJP
		31 SIVAGANGA	1412373	1027036	72.72	ADMK	475993	229385	246608	DMK	133763		BJP
		32 MADURAI	1441434	974809	67.63	ADMK	453785	199424	254361	DMK	146751		DMDK
		33 THENI	1441302	1075583	74.63	ADMK	571254	314532	256722	DMK	134362		MDMK
		34 VRUDHUNAGAR	1350495	1010930	74.86	ADMK	406694	145551	261143	MDMK	241505	YES	DMK
		35 RAMANATHAPURAM	1455988	1001048	68.75	ADMK	405945	119324	286621	DMK	171082	YES	BJP
		36 THOOTHUKKUDI	1310406	916778	69.96	ADMK	366052	124002	242050	DMK	182191	YES	MDMK
		37 TENKASI	1382081	1017938	73.65	ADMK	424586	161774	262812	PT	190233	YES	MDMK
		38 TIRUNELVELI	1420435	962330	67.75	ADMK	398139	126099	272040	DMK	127370	YES	DMDK
		39 KANNIYAKUMARI	1467796	990742	67.50	BJP	372906	128662	244244	INC	176239	YES	ADMK

## Analysis of General Election 2014

UTTAR PRADESH Constituencies

District	Assembly No.	Constituencies	Voting			Winner's Votes	Winning Margin	Second's Votes	Second Party	Third's Votes	Is Third's Votes more than Winning Margin	Third Party	
			Electors	Votes Polled	Percenta ge								Winning Party
		1 SAHARANPUR	1608833	1194308	74.23	BJP	472999	65090	407909	INC	235033	YES	BSP
		2 KAIRANA	1531767	1119324	73.07	BJP	565909	236828	329081	SP	160414		BSP
		3 MUZAFFARNAGAR	1588475	1107434	69.72	BJP	653391	401150	252241	BSP	160810		SP
		4 BIJNOR	1562081	1060346	67.88	BJP	486913	205774	281139	SP	230124	YES	BSP
		5 NAGINA	1493419	942196	63.09	BJP	367825	92390	275435	SP	245685	YES	BSP
		6 MORADABAD	1771985	1127965	63.66	BJP	485224	87504	397720	SP	160945	YES	BSP
		7 RAMPUR	1616972	956389	59.15	BJP	358616	23435	335181	SP	156466	YES	INC
		8 SAMBHAL	1693229	1057002	62.43	BJP	360242	5174	355068	SP	252640	YES	BSP
		9 AMROHA	1544245	1095860	70.96	BJP	528880	158214	370666	SP	162983	YES	BSP
		10 MEERUT	1764388	1113384	63.10	BJP	532981	232326	300655	BSP	211759		SP
		11 BAGHPAT	1505175	1004263	66.72	BJP	423475	209866	213609	SP	199516		RLD
		12 GHAZIABAD	2357553	1342321	56.94	BJP	758482	567260	191222	INC	173085		BSP
		13 GAUTAM BUDDHA NAGAR	1986109	1199262	60.38	BJP	599702	280212	319490	SP	198237		BSP
		14 BULANDSHAR	1736436	1009710	58.15	BJP	604449	421973	182476	BSP	128737		SP
		15 ALIGARH	1793126	1064357	59.36	BJP	514622	286736	227886	BSP	226284		SP
		16 HATHRAS	1758927	1049273	59.65	BJP	544277	326386	217891	BSP	180891		SP
		17 MATHURA	1682260	1076868	64.01	BJP	574633	330743	243890	RLD	173572		BSP
		18 AGRA	1814739	1070400	58.98	BJP	583716	300263	283453	BSP	134708		SP
		19 FATEHPUR SIKRI	1580582	967968	61.24	BJP	426589	173106	253483	BSP	213397	YES	SP
		20 FIROZABAD	1636738	1104606	67.49	SP	534583	114059	420524	BJP	118909	YES	BSP
		21 MAINPURI	1653058	999265	60.45	SP	595918	364666	231252	BJP	142833		BSP
		22 ETAH	1577457	926281	58.72	BJP	474978	201001	273977	SP	137127		BSP
		23 BADAUN	1769145	1027594	58.08	SP	498378	166347	332031	BJP	156973		BSP
		24 AONLA	1653577	995641	60.21	BJP	409907	138429	271478	SP	190200	YES	BSP
		25 BAREILLY	1664081	1017891	61.17	BJP	518258	240685	277573	SP	106049		BSP
		26 PILBHIT	1671154	1050547	62.86	BJP	546934	307052	239882	SP	196294		BSP
		27 SHAHJAHAN	1979294	1129841	57.08	BJP	525132	235529	289603	BSP	242913	YES	SP
		28 KHERI	1679466	1077868	64.18	BJP	398578	110274	288304	BSP	183940	YES	INC
		29 DHAURAHRA	1558041	1060271	68.05	BJP	360357	125675	234682	BSP	234032	YES	SP
		30 SITAPUR	1550263	1026972	66.25	BJP	417546	51027	366519	BSP	156170	YES	SP
		31 HARDOI	1714388	972896	56.75	BJP	360501	81343	279158	BSP	276543	YES	SP
		32 MISRIKH	1725589	998314	57.85	BJP	412575	87363	325212	BSP	194759	YES	SP
		33 UNNAO	2164392	1201603	55.52	BJP	518834	310173	208661	SP	200176		BSP
		34 MOHANLALGANJ	1838194	1116588	60.74	BJP	455274	145416	309858	BSP	242366	YES	SP
		35 LUCKNOW	1949958	1033883	53.02	BJP	561106	272749	288357	INC	64449		BSP
		36 RAE BARELI	1594954	825136	51.73	INC	526434	352713	173721	BJP	63633		BSP
		37 AMETHI	1669843	874625	52.38	INC	408651	107903	300748	BJP	57716		BSP
		38 SULTHANPUR	1703698	964981	56.64	BJP	410348	178902	231446	BSP	228144	YES	SP
		39 PRATAPGARH	1716394	894456	52.11	AD	375789	168222	207567	BSP	138620		INC
		40 FARRUKHABAD	1613781	970677	60.15	BJP	406195	150502	255693	SP	114521		BSP
		41 ETAWAH	1707237	939604	55.04	BJP	439646	172946	266700	SP	192804	YES	BSP
		42 KANNAUJ	1808886	1114460	61.61	SP	489164	19907	469257	BJP	127785	YES	BSP
		43 KANPUR	1611248	835079	51.83	BJP	474712	222946	251766	INC	53218		BSP
		44 AKBARPUR	1768635	971375	54.92	BJP	481584	278997	202587	BSP	147002		SP
		45 JALAUJ	1887189	1109166	58.77	BJP	548631	287202	261429	BSP	180921		SP
		46 JHANSI	1932052	1320804	68.36	BJP	575889	190467	385422	SP	213792	YES	BSP
		47 HAMIRPUR	1737993	975240	56.11	BJP	453884	266788	187096	SP	176356		BSP
		48 BANDA	1601855	858326	53.58	BJP	342066	115788	226278	BSP	189730	YES	SP
		49 FATEHPUR	1804753	1056688	58.55	BJP	485994	187206	298788	BSP	197924		SP
		50 KAUSHAMBI	1738509	910414	52.37	BJP	331724	42900	288824	SP	201322	YES	BSP
		51 PHULPUR	1913275	960341	50.19	BJP	503564	308308	195256	SP	163710		BSP
		52 ALLAHABAD	1666589	891586	53.50	BJP	313772	62009	251763	SP	162073	YES	BSP

53	BARABANKI	1721278	1068168	62.06	BJP	454214	211878	242336	JNC	167150		BSP
54	FAIZABAD	1738701	1022716	58.82	BJP	491761	282775	208986	SP	141827		BSP
55	AMBEDKAR NAGAR	1718774	1022716	59.50	BJP	491761	282775	208986	SP	141827		BSP
56	BAHRAICH	1638640	934263	57.01	BJP	432392	95645	336747	SP	96904	YES	BSP
57	KAISERGANJ	1711967	943357	55.10	BJP	381500	78218	303282	SP	146726	YES	BSP
58	SHRAWASTI	1788080	979638	54.79	BJP	345964	85913	260051	SP	194890	YES	BSP
59	GONDA	1710825	873728	51.07	BJP	359639	160412	199227	SP	116178		BSP
60	DOMARIYAGANJ	1761415	935027	53.08	BJP	298845	103588	195257	BSP	174778	YES	SP
61	BASTI	1787476	1048534	58.66	BJP	357680	33562	324118	SP	283747	YES	BSP
62	SANT KABIR NAGAR	1904315	1011649	53.12	BJP	348892	97978	250914	BSP	240169	YES	SP
63	MAHARAJGANJ	1743131	1056078	60.59	BJP	471542	240458	231084	BSP	213974		SP
64	GORAKHPUR	1903988	1040199	54.63	BJP	539127	312783	226344	SP	176412		BSP
65	KUSHI NAGAR	1680992	950446	56.54	BJP	370051	85540	284511	JNC	132881	YES	BSP
66	DEORIA	1806926	971557	53.77	BJP	496500	265386	231114	BSP	150852		SP
67	BANSGAON	1760090	877877	49.88	BJP	417959	189516	228443	BSP	133675		SP
68	LALGANJ	1661470	898655	54.09	BJP	324016	63086	260930	SP	233971	YES	BSP
69	AZAMGARH	1703121	960218	56.38	SP	340306	63204	277102	BJP	266528	YES	BSP
70	GHOSI	1891112	1039656	54.98	BJP	379797	146015	233782	BSP	165887	YES	SP
71	SALEMPUR	1661737	854749	51.44	BJP	392213	232342	159871	BSP	159688		SP
72	BALIA	1768271	942211	53.28	BJP	359758	139434	220324	SP	163943	YES	QED
73	JAUNPUR	1848842	1007143	54.47	BJP	367149	146310	220839	BSP	180003	YES	SP
74	MACHHLISHAHR	1891969	997902	52.74	BJP	438210	172155	266055	BSP	191387	YES	SP
75	GHAZIPUR	1801519	986673	54.77	BJP	306929	32452	274477	SP	241645	YES	BSP
76	CHANDAULI	1593133	980575	61.55	BJP	414135	156756	257379	BSP	204145	YES	SP
77	VARANASI	1766487	1030685	58.35	BJP	581022	371784	209238	AAAP	75614		INC
78	BHADOHI	1834598	981866	53.52	BJP	403695	158141	245554	BSP	238712	YES	SP
79	MIRZAPUR	1720661	1007627	58.56	AD	436536	219079	217457	BSP	108859		SP
80	ROBERTSGANJ	1639074	885873	54.05	BJP	378211	190486	187725	BSP	135966		SP

**Analysis of General Election 2014**  
*Union Territories Constituencies*

Constituencies	Electors	Voting			Winner's Votes	Winning Margin	Second's Votes	Second Party	Third's Votes	Is Third's Votes more than Winning Margin	Third Party	
		Votes Polled	Percenta ge	Winning Party								
DAMAN & DIU	111827	87233	78.01	BJP	46960	9222	37738	INC	1316		NOTA	
LAKSHADWEEP	49922	43239	86.61	NCP	21665	1535	20130	INC	488		SP	
PUDUCHERRY	901357	740017	82.10	AINRC	255826	60854	194972	INC	132657	YES	ADMK	
ANDAMAN & NICOBAR ISLANDS	269360	190328	70.66	BJP	90969	7812	83157	INC	3737		AAAP	
CHANDIGARH	615214	453455	73.71	BJP	191362	69662	121700	INC	108679	YES	AAAP	
DADRA & NAGAR HAVELI	196597	165286	84.07	BJP	80790	6214	74576	INC	2962		NOTA	
MANIPUR	INNER MANIPUR	855360	640870	74.92	INC	292102	94674	197428	CPI	92444		BJP
	OUTER MANIPUR	919009	771766	83.98	INC	296770	15637	281133	NPF	75828	YES	BJP
MEGHALAYA	SHILLONG	980740	619987	63.22	INC	209340	40379	168961	IND	106817	YES	UDP
	TURA	586501	458071	78.10	NPEP	239301	39716	199585	INC	19185		NOTA
MIZORAM	MIZORAM	702170	433201	61.69	INC	210485	6154	204331	IND	11890	YES	AAAP
NAGALAND	NAGALAND	1182972	1038910	87.82	NPF	713372	400225	313147	INC	9695		SP(I)
ARUNACHAL PRADESH	ARUNACHAL WEST (ST)	446640	335665	75.15	BJP	169367	41738	127629	INC	14664		PPA
	ARUNACHAL EAST (ST)	312704	261291	83.56	INC	118455	12478	105977	BJP	32354		PPA
TRIPURA	TRIPURA WEST	1248546	1072749	85.92	CPM	671665	503486	168179	INC	117727		AITC
	TRIPURA EAST	1140276	951080	83.41	CPM	623771	484358	139413	INC	77028		AITC
SIKKIM	SIKKIM	370770	308967	83.33	SDF	163698	41742	121956	SKM	7279		BJP
GOA	NORTH GOA	515441	406631	78.89	BJP	237903	105699	132204	INC	15857		AAAP
	SOUTH GOA	545336	410369	75.25	BJP	198776	32330	166446	INC	11941		AITC

## Analysis of General Election 2014

Andhra Pradesh Constituencies

District	Lok Sabha No.	Constituencies	Voting						Is Third's Votes more than Winning Margin	Third Party			
			Electors	Votes Polled	Percentage	Winning Party	Winner's Votes	Winning Margin			Second's Votes	Second Party	Third's Votes
	18	ARUKU	1272340	909614	71.49	YSRCP	413191	91398	321793	TDP	52884		INC
	19	SRIKAKULAM	1413726	1052115	74.42	TDP	556545	127692	428853	YSRCP	24171		INC
	20	VIZIANAGARAM	1403736	1120316	79.81	TDP	536549	106911	429638	YSRCP	122487	YES	INC
	21	VISAKHAPATNAM	1723011	1163558	67.53	BJP	566832	90488	476344	YSRCP	50632		INC
	22	ANAKAPALLI	1401474	1148072	81.92	TDP	568463	47932	520531	YSRCP	17770		INC
	23	KAKINADA	1418290	1099999	77.56	TDP	514402	3431	510971	YSRCP	19754	YES	INC
	24	AMALAPURAM	1357865	1120927	82.55	TDP	594547	120576	473971	YSRCP	12182		INC
	25	RAJAMUNDRY	1421276	1154381	81.22	TDP	630573	167434	463139	YSRCP	21243		INC
	26	NARSAPURAM	1325028	1088947	82.18	BJP	540306	85351	454955	YSRCP	27083		INC
	27	ELURU	1427764	1201697	84.17	TDP	623471	101926	521545	YSRCP	11770		INC
	28	MACHILIPATNAM	1369311	1141065	83.33	TDP	587280	81057	506223	YSRCP	14111		INC
	29	VIJAYAWADA	1564513	1195765	76.43	TDP	592953	74714	518239	YSRCP	39760		INC
	30	GUNTUR	1572017	1244926	79.19	TDP	618417	69111	549306	YSRCP	46818		INC
	31	NARASARAOPET	1514861	1282058	84.63	TDP	632464	35280	597184	YSRCP	22943		INC
	32	BAPATLA	1392964	1184634	85.04	TDP	578145	32754	545391	YSRCP	23072		INC
	33	ONGOLE	1470212	1208225	82.18	YSRCP	589861	15559	574302	TDP	13356		INC
	34	NANDYAL	1576945	1204956	76.41	YSRCP	622411	105766	516645	TDP	16376		INC
	35	KURNOOL	1481791	1065732	71.92	YSRCP	472782	44131	428651	TDP	116623	YES	INC
	36	ANANTAPUR	1536894	1212145	78.87	TDP	610288	61991	548297	YSRCP	16719		INC
	37	HINDUPUR	1446496	1177257	81.39	TDP	604291	97325	506966	YSRCP	36452		INC
	38	KADAPA	1550440	1200662	77.44	YSRCP	671983	190323	481660	TDP	14319		INC
	39	NELLORE	1606127	1187648	73.94	YSRCP	576396	13478	562918	TDP	22870	YES	INC
	40	TIRUPATI	1574161	1213062	77.06	YSRCP	580376	37425	542951	BJP	33333		INC
	41	RAJAMPET	1487791	1158317	77.85	YSRCP	601752	174762	426990	BJP	29332		INC
	42	CHITTOOR	1451851	1192153	82.11	TDP	594862	44138	550724	YSRCP	16572		INC
			36760884	28928231	78.69		14479140	2020953	12458187		822632		

## Analysis of General Election 2014

Telangana Constituencies

District	Lok Sabha No.	Constituencies	Voting						Is Third's Votes more than Winning Margin	Third Party			
			Electors	Votes Polled	Percentage	Winning Party	Winner's Votes	Winning Margin			Second's Votes	Second's Party	Third's Votes
		1 ADILABAD	1386282	1045839	75.44	TRS	430847	271290	159557	INC	184198		TDP
		2 PEDDAPALLE	1425355	1022184	71.71	TRS	565496	291158	274338	INC	63334		TDP
		3 KARIMNAGAR	1550810	1125184	72.55	TRS	505368	204662	300706	INC	214828	YES	BJP
		4 NIZAMABAD	1496193	1033924	69.10	TRS	439307	167184	272123	INC	225333	YES	BJP
		5 ZAHIRABAD	1445354	1094806	75.75	TRS	508661	144631	364030	INC	157497	YES	TDP
		6 MEDAK	1536166	1191011	77.53	TRS	657492	397029	260463	INC	181804		BJP
		7 MALKAJGIRI	3183083	1620444	50.91	TDP	523356	28166	495190	TRS	233530	YES	INC
		8 SECUNDERABAD	1893741	1003769	53.00	BJP	438271	254735	183536	INC	145095		AIMIM
		9 HYDERABAD	1823217	971421	53.28	AIMIM	513868	202454	311414	BJP	49310		INC
		10 CHELVELLA	2185164	1315862	60.22	TRS	435077	73023	362054	INC	353203	YES	TDP
		11 MAHBUBNAGAR	1418668	1014800	71.53	TRS	334228	2590	331638	INC	272791	YES	BJP
		12 NAGARKURNOOL	1477305	1108968	75.07	INC	420075	16676	403399	TRS	183352	YES	TDP
		13 NALGONDA	1494343	1189399	79.59	INC	472093	193156	278937	TDP	260677	YES	TRS
		14 BHONGIR	1492240	1211732	81.20	TRS	448164	30544	417620	INC	183249	YES	BJP
		15 WARANGAL	1537778	1174631	76.38	TRS	661639	392574	269065	INC	187139		BJP
		16 MAHABUBABAD	1387288	1124372	81.05	TRS	320569	34992	285577	INC	215904	YES	TDP
		17 KHAMMAM	1440267	909614	63.16	YSRCP	422434	12204	410230	TDP	187702	YES	CPI
			28173254	19157960	68.00		8096945	2717068	5379877		3298946		