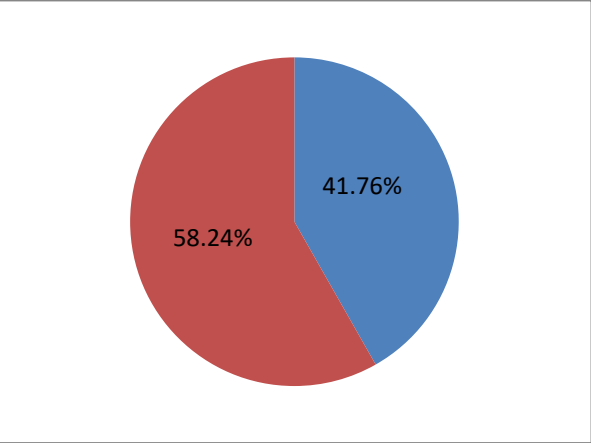


2017 BMC ELECTION

CONSITUENCY 225- A WARD

|  |       |
|--|-------|
| Sujata Sanap (Winner)                        | 10388 |
| Yojana Thokale                               | 6886  |
| Winning Margin                               | 3502  |
| Winning Margin as Percentage of Total Votes  | 5.71  |
| Winning Margin as Percentage of Votes Polled | 13.67 |

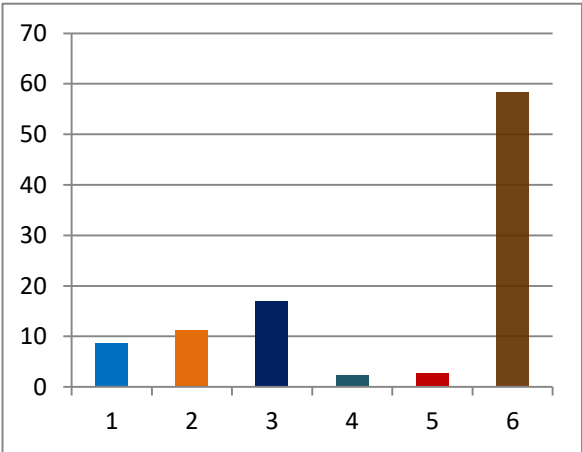
|                       |       |
|-----------------------|-------|
| TOTAL ELECTORS        | 61341 |
| VOTES POLLED          | 25619 |
| VOTES NOT POLLED      | 35722 |
| VOTING PERCENTAGE     | 41.76 |
| NON VOTING PERCENTAGE | 58.24 |



Percentage of votes secured over total electors in the constituency

- 1 INC
- 2 BJP
- 3 SHS
- 4 OTHER PARTIES
- 5 IND + NOTA
- 6 NON VOTING %

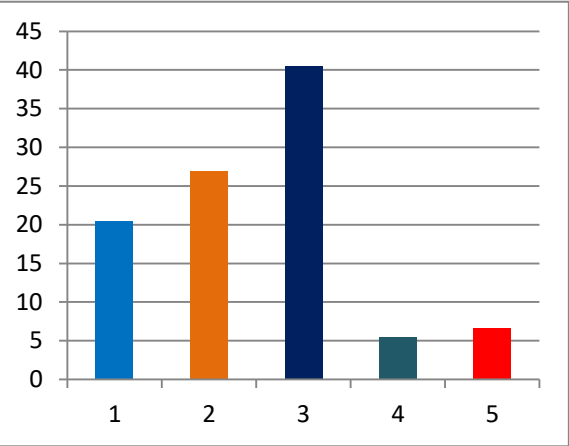
|       |
|-------|
| 8.56  |
| 11.23 |
| 16.93 |
| 2.29  |
| 2.75  |
| 58.24 |



Percentage of votes secured over total votes polled in the constituency

- 1 INC
- 2 BJP
- 3 SHS
- 4 OTHER PARTIES
- 5 IND + NOTA

|       |
|-------|
| 20.5  |
| 26.88 |
| 40.55 |
| 5.48  |
| 6.59  |



(TOTAL ELECTORS 61341  
VOTES SECURED

% of votes secured  
Over total  
votes polled  
in  
constituency

| SL NO | CANDIDATE NAME            | SEX | CATEGORY | PARTY | GENERAL | Over total<br>electors in<br>constituency | Over total<br>votes polled<br>in<br>constituency |
|-------|---------------------------|-----|----------|-------|---------|---|--|
| 1     | Anjana Suresh Chabukswar  | F   | GEN      | INC   | 5253    | 8.56                                      | 20.50  |
| 2     | Sujata Sanap Digvijay     | F   | GEN      | SHS   | 10388   | 16.93                                     | 40.55  |
| 3     | Yojana Virendra Thokale   | F   | GEN      | BJP   | 6886    | 11.23                                     | 26.88  |
| 4     | Jadhav Ammol Vijay        | F   | GEN      | BSP   | 237     | 0.39                                      | 0.93   |
| 5     | Vaishali Sachin Gangavane | F   | GEN      | MNS   | 1165    | 1.90                                      | 4.55   |
| 6     | Rohini Anant Marchanda    | F   | GEN      | IND   | 744     | 1.21                                      | 2.90   |
| 7     | Rupa Mahipatrao Mane      | F   | GEN      | IND   | 150     | 0.24                                      | 0.59   |
| 8     | Sanjaivani Gulab Gaikwad  | F   | GEN      | IND   | 210     | 0.34                                      | 0.82   |
|       | NOTA                      |     |          |       | 586     | 0.96                                      | 2.29   |
|       |                           |     |          |       | 25619   |   |  |

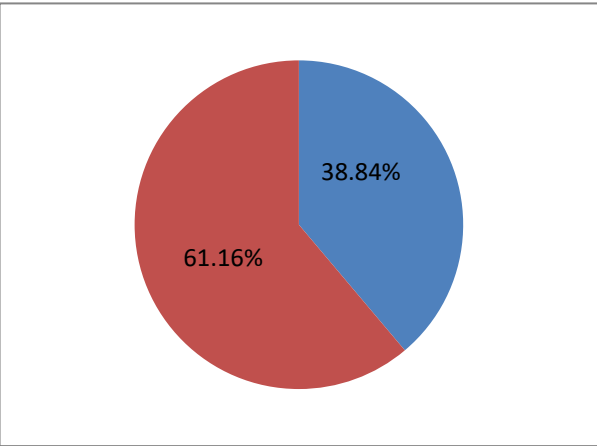
CONSTITUENCY 226- A WARD

Sasson Docks - WTC - Geeta Nagar  
Harshita Ashwin Narwekar(Winner)  
Smita Krishna Pawle  
Winning Margin

2017 BMC ELECTION  
Reserved for Women

11053  
6852  
4201  
  
6.67  
17.17

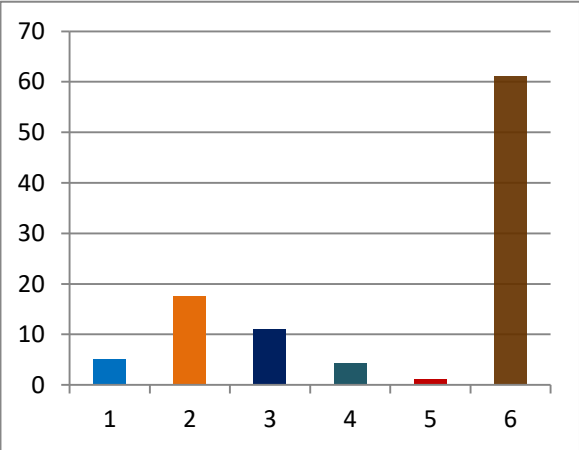
TOTAL ELECTORS 62978  
VOTES POLLED 24463  
VOTES NOT POLLED 38515  
VOTING PERCENTAGE 38.84  
NON VOTING PERCENTAGE 61.16



Percentage of votes secured over total electors in the constituency

- 1 INC
- 2 BJP
- 3 SHS
- 4 OTHER PARTIES
- 5 IND + NOTA
- 6 NON VOTING %

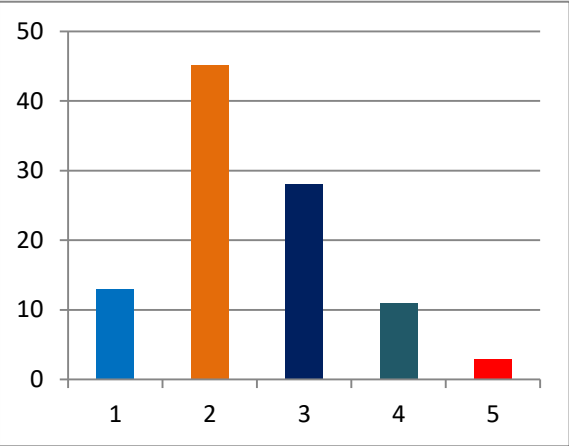
5.02  
17.55  
10.88  
4.23  
1.16  
61.16



Percentage of votes secured over total votes polled in the constituency

- 1 INC
- 2 BJP
- 3 SHS
- 4 OTHER PARTIES
- 5 IND + NOTA

12.92  
45.18  
28.01  
10.89  
3



(TOTAL ELECTORS 62978  
VOTES SECURED

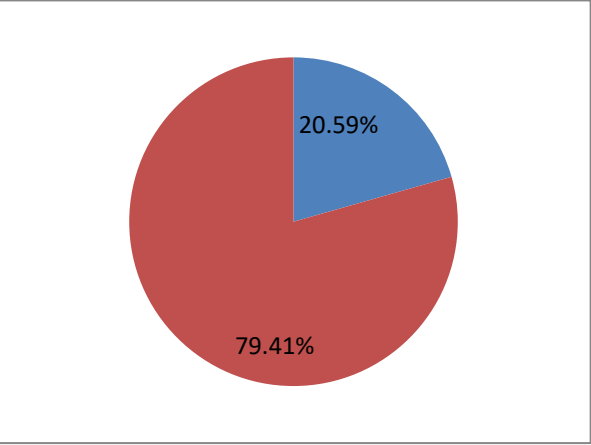
% of votes secured

| SL NO | CANDIDATE NAME           | SEX | CATEGORY | PARTY | GENERAL | Over total<br>electors in<br>constituency | Over total<br>votes polled in<br>constituency |       |
|-------|--------------------------|-----|----------|-------|---------|---|---|-------|
| 1     | Sushama Vinod Shekhar    | F   | GEN      | INC   | 3161    | 5.02                                      | 12.92   |       |
| 2     | Smita Krishna Pawle      | F   | GEN      | SHS   | 6852    | 10.88                                     | 28.01   |       |
| 3     | Harshita Ashwin Narwekar | F   | GEN      | BJP   | 11053   | 17.55                                     | 45.18   |       |
| 4     | Shirin Nadim Sayyd       | F   | GEN      | NCP   | 276     | 0.44                                      | 1.13  |       |
| 5     | Nilima Vasudev Tandel    | F   | GEN      | MNS   | 969     | 1.54                                      | 3.96  |       |
| 6     | Rekha Ashish Singh       | F   | GEN      | SP    | 1287    | 2.04                                      | 5.26  |       |
| 7     | Shaikh Rihanbegam Moh.   | F   | GEN      | BSP   | 132     | 0.21                                      | 0.54  |       |
| 8     | Chauhan Bharti Santosh   | F   | GEN      | IND   | 122     | 0.19                                      | 0.50  | 1.13  |
| 9     | Shah Sujata Anil         | F   | GEN      | IND   | 112     | 0.18                                      | 0.46  | 3.96  |
| 10    | Shobha Ramu Rathod       | F   | GEN      | IND   | 147     | 0.23                                      | 0.60  | 5.26  |
|       | NOTA                     |     |          |       | 352     | 0.56                                      | 1.44  | 0.54  |
|       |                          |     |          |       | 24463   |   |   | 10.89 |

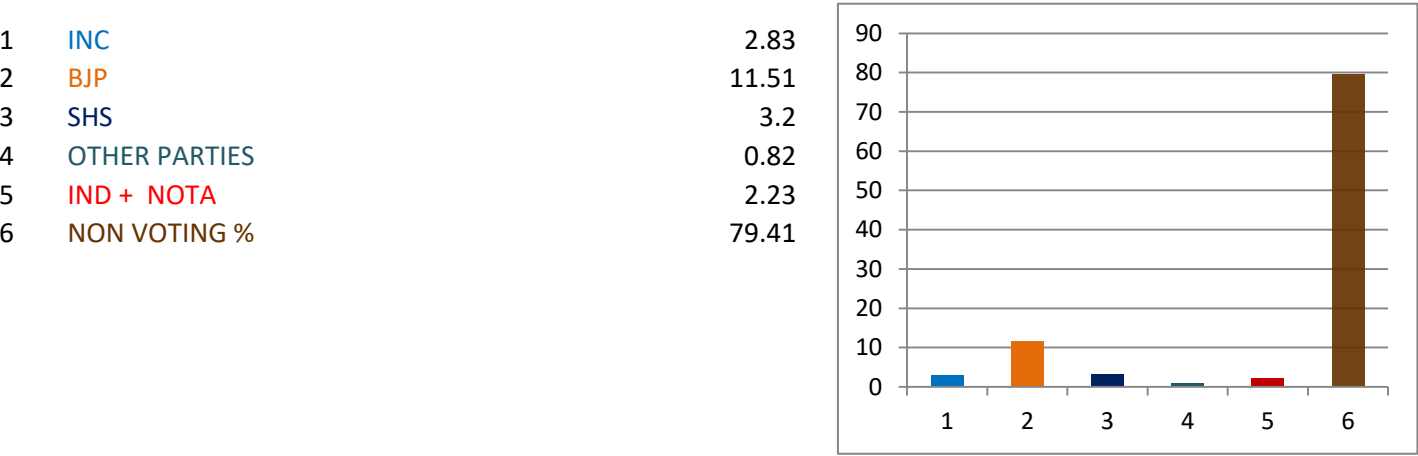
2017 BMC ELECTION

CONSITUENCY 227- A WARD

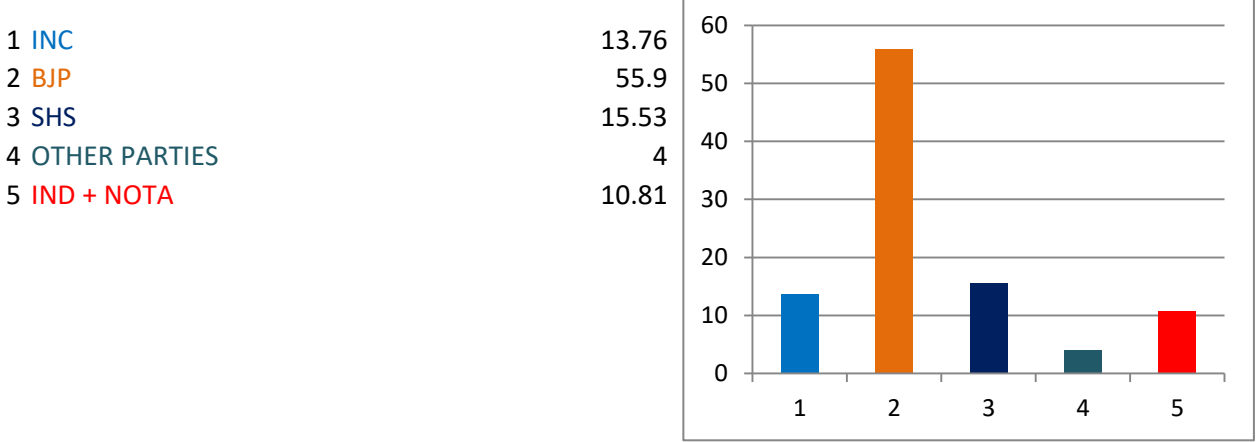
|  |       |                       |       |
|--|-------|-----------------------|-------|
|  |       | TOTAL ELECTORS        | 60695 |
| Makarand Suresh Narwekar (Winner)            | 6987  | VOTES POLLED          | 12498 |
| Arvind Dattaram Rane                         | 1941  | VOTES NOT POLLED      | 48197 |
| Winning Margin                               | 5046  | VOTING PERCENTAGE     | 20.59 |
|  |       | NON VOTING PERCENTAGE | 79.41 |
| Winning Margin as Percentage of Total Votes  | 8.31  |                       |       |
| Winning Margin as Percentage of Votes Polled | 40.37 |                       |       |



Percentage of votes secured over total electors in the constituency



Percentage of votes secured over total votes polled in the constituency



(TOTAL ELECTORS 60695  
VOTES SECURED

% of votes secured

| SL NO | CANDIDATE NAME               | SEX | CATEGORY | PARTY     | GENERAL | Over total electors in constituency | Over total votes polled in constituency |
|-------|------------------------------|-----|----------|-----------|---------|-------------------------------------|---|
| 1     | Pooran Mohanlal Doshi        | M   | GEN      | INC       | 1720    | 2.83                                | 13.76                                   |
| 2     | Arvind Dattaram Rane         | M   | GEN      | SHS       | 1941    | 3.20                                | 15.53                                   |
| 3     | Makarand Suresh Narwekar     | M   | GEN      | BJP       | 6987    | 11.51                               | 55.90                                   |
| 4     | Sanjay Shankar Kokate        | M   | GEN      | NCP       | 187     | 0.31                                | 1.50                                    |
| 5     | Redkar Dhruva Pundlik        | M   | GEN      | Lokbharti | 43      | 0.07                                | 0.34                                    |
| 6     | Vithal Chandibai Chavan      | M   | GEN      | JD(S)     | 50      | 0.08                                | 0.40                                    |
| 7     | Vijaya Laxman Gayakwad       | F   | GEN      | BSP       | 112     | 0.18                                | 0.90                                    |
| 8     | Aamir Ibrahim Vakil          | M   | GEN      | AIMIM     | 107     | 0.18                                | 0.86                                    |
| 9     | Jeetendra Avadhnarayan Singh | M   | GEN      | IND       | 15      | 0.02                                | 0.12                                    |
| 10    | Rohit Pandy                  | M   | GEN      | IND       | 1038    | 1.71                                | 8.31                                    |
| 11    | Vaibhav Vasant Narvekar      | M   | GEN      | IND       | 88      | 0.14                                | 0.70                                    |
|       | NOTA                         |     |          |           | 210     | 0.35                                | 1.68                                    |
|       |                              |     |          |           | 12498   |                                     |   |

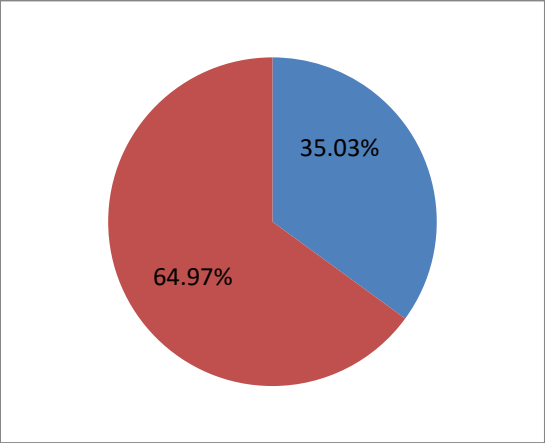
2017 BMC ELECTION

CONSITUENCY 223- B WARD

|                          |      |
|--------------------------|------|
| NIKITA D. NIKAM (Winner) | 8634 |
| ASHA P. MAMIDI           | 5442 |
| Winning Margin           | 3192 |

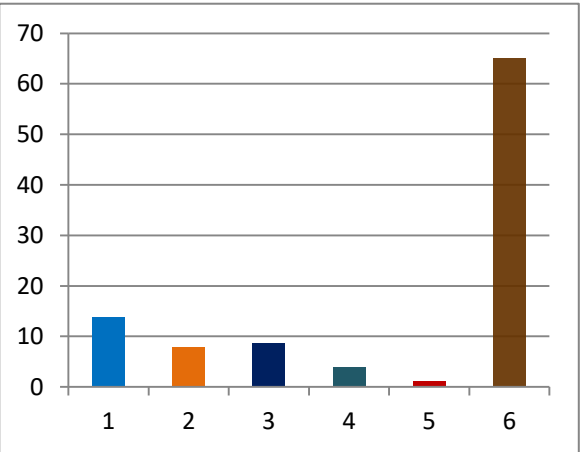
|  |       |
|--|-------|
| Winning Margin as Percentage of Total Votes  | 5.06  |
| Winning Margin as Percentage of Votes Polled | 14.45 |

|                       |       |
|-----------------------|-------|
| TOTAL ELECTORS        | 63045 |
| VOTES POLLED          | 22085 |
| VOTES NOT POLLED      | 40960 |
| VOTING PERCENTAGE     | 35.03 |
| NON VOTING PERCENTAGE | 64.97 |



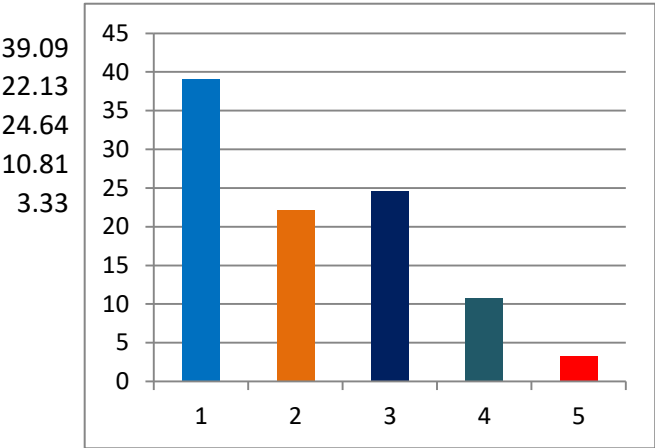
Percentage of votes secured over total electors in the constituency

|   |               |       |
|---|---------------|-------|
| 1 | INC           | 13.69 |
| 2 | AIMIM         | 7.75  |
| 3 | SHS           | 8.63  |
| 4 | OTHER PARTIES | 3.79  |
| 5 | IND + NOTA    | 1.17  |
| 6 | NON VOTING %  | 64.97 |



Percentage of votes secured over total votes polled in the constituency

|   |               |       |
|---|---------------|-------|
| 1 | INC           | 39.09 |
| 2 | AIMIM         | 22.13 |
| 3 | SHS           | 24.64 |
| 4 | OTHER PARTIES | 10.81 |
| 5 | IND + NOTA    | 3.33  |



% of votes secured

(TOTAL ELECTORS 63045  
VOTES SECURED

| SL NO | CANDIDATE NAME                  | SEX | CATEGORY | PARTY | GENERAL |
|-------|---------------------------------|-----|----------|-------|---------|
| 1     | NIKITA DNYANRAJ NIKAM           | F   | GEN      | INC   | 8634    |
| 2     | Asha Parmesh mamidi             | F   | GEN      | SHS   | 5442    |
| 3     | VAKARUNISA JAHID HUSSAIN ANSARI | F   | GEN      | AIMIM | 4887    |
| 4     | NedaFathima ShahidAhmed Shaikh  | F   | GEN      | SP    | 1376    |
| 5     | SUREKHA PANDURANG BADHE         | F   | GEN      | MNS   | 793     |
| 6     | Sharmeen Mohammed Irfan Dossa   | F   | GEN      | NCP   | 218     |
| 7     | ALMAS YASIN BHATTI              | F   | GEN      | IND   | 48      |
| 8     | SHAMIM FAKHRUDDIN QADRI         | F   | GEN      | IND   | 30      |
| 9     | RESHMA MOHAMMEDNABI IDRISI      | F   | GEN      | IND   | 26      |
| 10    | NOTA                            |     |          |       | 631     |

22085

| Over total electors in constituency | Over total votes polled in constituency |
|-------------------------------------|---|
| 13.69                               | 39.09                                   |
| 8.63                                | 24.64                                   |
| 7.75                                | 22.13                                   |
| 2.18                                | 6.23                                    |
| 1.26                                | 3.59                                    |
| 0.35                                | 0.99                                    |
| 0.08                                | 0.22                                    |
| 0.05                                | 0.14                                    |
| 0.04                                | 0.12                                    |
| 1.00                                | 2.86                                    |

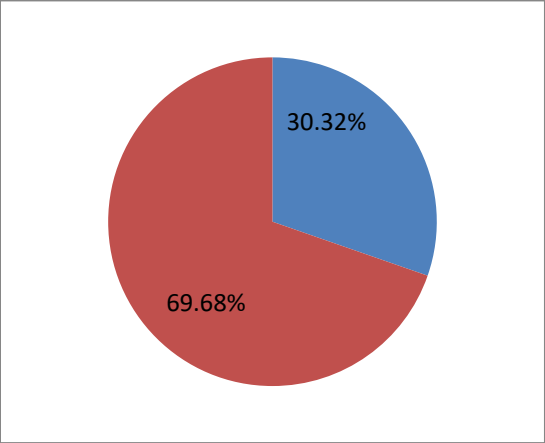
2017 BMC ELECTION

CONSITUENCY 224- B WARD

|                           |      |
|---------------------------|------|
| AFREEN J. SHAIKH (Winner) | 7681 |
| TAYEBA M.J. HAFIZI        | 5854 |
| Winning Margin            | 1827 |

|  |      |
|--|------|
| Winning Margin as Percentage of Total Votes  | 2.84 |
| Winning Margin as Percentage of Votes Polled | 9.38 |

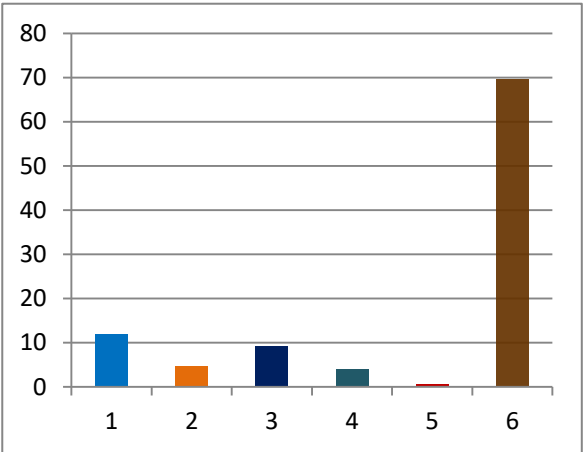
|                       |       |
|-----------------------|-------|
| TOTAL ELECTORS        | 64245 |
| VOTES POLLED          | 19482 |
| VOTES NOT POLLED      | 44763 |
| VOTING PERCENTAGE     | 30.32 |
| NON VOTING PERCENTAGE | 69.68 |



Percentage of votes secured over total electors in the constituency

- 1 INC
- 2 MNS
- 3 SHS
- 4 NCP
- 5 NOTA
- 6 NON VOTING %

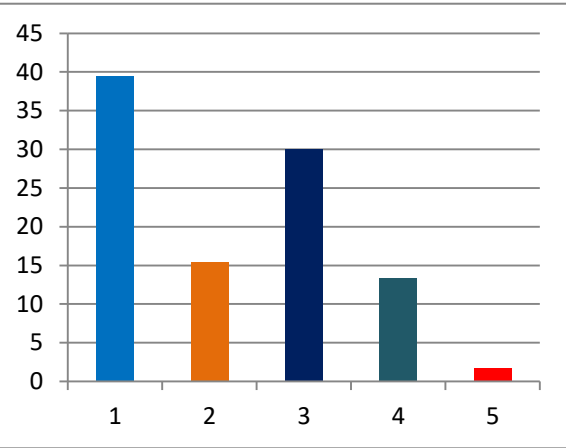
11.96  
4.67  
9.11  
4.05  
0.53  
69.68



Percentage of votes secured over total votes polled in the constituency

- 1 INC
- 2 MNS
- 3 SHS
- 4 NCP
- 5 NOTA

39.43  
15.4  
30.05  
13.37  
1.75



% of votes secured

(TOTAL ELECTORS 64245  
VOTES SECURED

| SL NO | CANDIDATE NAME                 | SEX | CATEGORY | PARTY | GENERAL |
|-------|--------------------------------|-----|----------|-------|---------|
| 1     | Afreen Javed Shaikh            | F   | GEN      | INC   | 7681    |
| 2     | Tayeba Mohammed Jaffer Hafizi  | F   | GEN      | SHS   | 5854    |
| 3     | SARLA RAMESH GAWADE            | F   | GEN      | MNS   | 3001    |
| 4     | vijayashree shailendra sakhare | F   | GEN      | NCP   | 2605    |
| 5     | NOTA                           |     |          |       | 341     |
|       |                                |     |          |       | 19482   |

| Over total electors in constituency | Over total votes polled in constituency |
|-------------------------------------|---|
| 11.96                               | 39.43                                   |
| 9.11                                | 30.05                                   |
| 4.67                                | 15.40                                   |
| 4.05                                | 13.37                                   |
| 0.53                                | 1.75                                    |

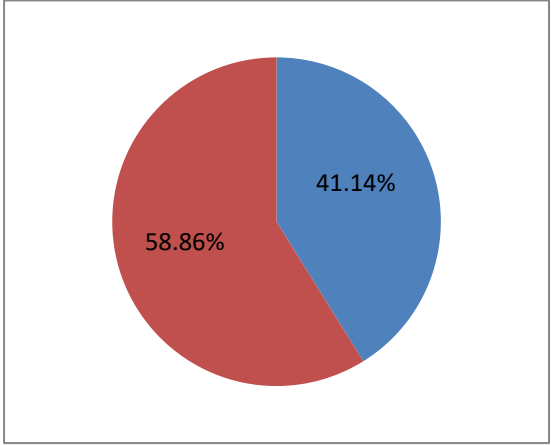
2017 BMC ELECTION

CONSITUENCY 220 - C WARD

|                      |      |
|----------------------|------|
| ATUL H. SHAH(Winner) | 5946 |
| SURENDRA R. BAGALKAR | 5946 |
| Winning Margin       | 0    |

|  |      |
|--|------|
| Winning Margin as Percentage of Total Votes  | 0.00 |
| Winning Margin as Percentage of Votes Polled | 0.00 |

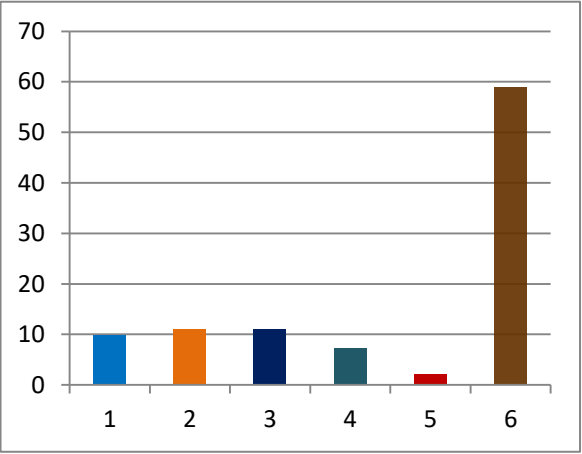
|                       |       |
|-----------------------|-------|
| TOTAL ELECTORS        | 54418 |
| VOTES POLLED          | 22389 |
| VOTES NOT POLLED      | 32029 |
| VOTING PERCENTAGE     | 41.14 |
| NON VOTING PERCENTAGE | 58.86 |



Percentage of votes secured over total electors in the constituency

- 1 INC
- 2 BJP
- 3 SHS
- 4 OTHER PARTIES
- 5 IND + NOTA
- 6 NON VOTING %

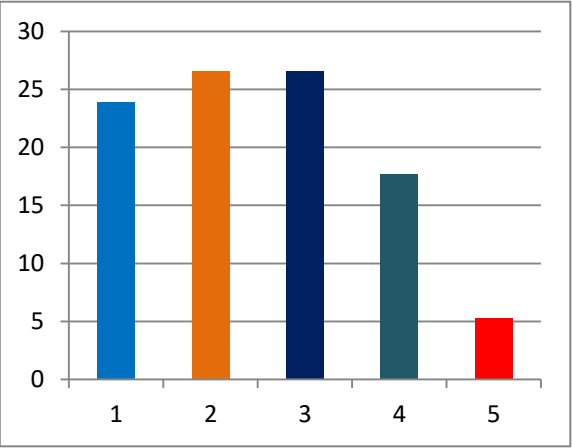
9.85  
10.93  
10.93  
7.26  
2.17  
58.86



Percentage of votes secured over total votes polled in the constituency

- 1 INC
- 2 BJP
- 3 SHS
- 4 OTHER PARTIES
- 5 IND + NOTA

23.93  
26.56  
26.56  
17.66  
5.29



% of votes secured

(TOTAL ELECTORS 54418  
VOTES SECURED

| SL NO | CANDIDATE NAME               | SEX | CATEGORY | PARTY | GENERAL |
|-------|------------------------------|-----|----------|-------|---------|
| 1     | ATUL HASMUKHLAL SHAH         | M   | GEN      | BJP   | 5946    |
| 2     | Surendra Ramkrishna Bagalkar | M   | GEN      | SHS   | 5946    |
| 3     | NARESHBHAI RAKSHANJI SHETH   | M   | GEN      | INC   | 5358    |
| 4     | Zeeshan Hamid Shaikh         | M   | GEN      | AIMIM | 1257    |
| 5     | RUPESH MAHENDRA KHANDKE      | M   | GEN      | NCP   | 971     |
| 6     | HUZAIFA ISMAIL ELECTRICWALA  | F   | GEN      | SP    | 923     |
| 7     | ZOEB AHMEDALI BOOTWALA       | M   | GEN      | IND   | 789     |
| 8     | KESHAV RAMESH MULAY          | M   | GEN      | MNS   | 752     |
| 9     | yusufi taher rangwala        | M   | GEN      | IND   | 68      |
| 10    | MONA RAJ SHETH               | F   | GEN      | ABS   | 51      |
| 11    | NOTA                         |     |          |       | 328     |

22389

| Over total electors in constituency | Over total votes polled in constituency |
|-------------------------------------|---|
| 10.93                               | 26.56                                   |
| 10.93                               | 26.56                                   |
| 9.85                                | 23.93                                   |
| 2.31                                | 5.61                                    |
| 1.78                                | 4.34                                    |
| 1.70                                | 4.12                                    |
| 1.45                                | 3.52                                    |
| 1.38                                | 3.36                                    |
| 0.12                                | 0.30                                    |
| 0.09                                | 0.23                                    |
| 0.60                                | 1.47                                    |

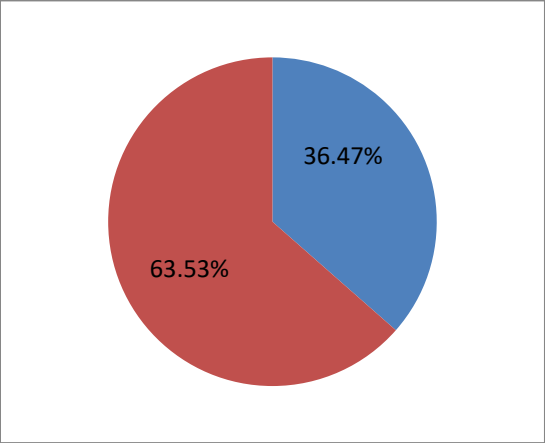
2017 BMC ELECTION

CONSITUENCY 221- C WARD

|                            |      |
|----------------------------|------|
| Akash Raj Purohit (Winner) | 6722 |
| Janak Jitendra Sanghvi     | 4853 |
| Winning Margin             | 1869 |

|  |      |
|--|------|
| Winning Margin as Percentage of Total Votes  | 3.27 |
| Winning Margin as Percentage of Votes Polled | 8.97 |

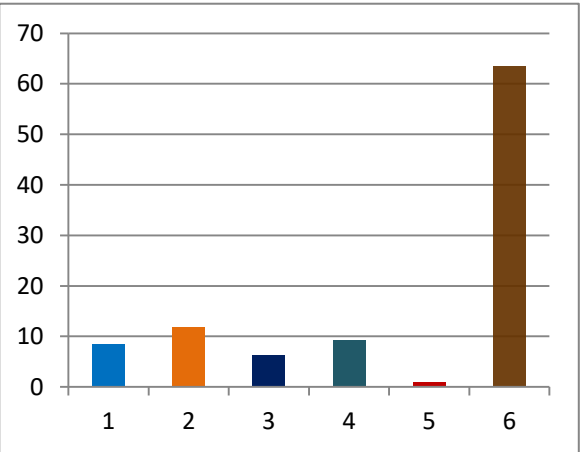
|                       |       |
|-----------------------|-------|
| TOTAL ELECTORS        | 57141 |
| VOTES POLLED          | 20842 |
| VOTES NOT POLLED      | 36299 |
| VOTING PERCENTAGE     | 36.47 |
| NON VOTING PERCENTAGE | 63.53 |



Percentage of votes secured over total electors in the constituency

- 1 INC
- 2 BJP
- 3 SHS
- 4 OTHER PARTIES
- 5 IND + NOTA
- 6 NON VOTING %

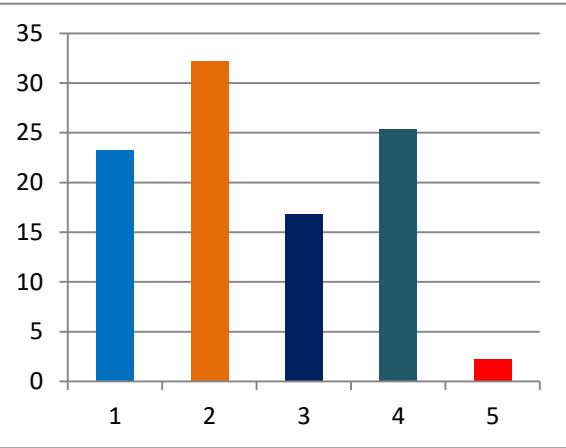
8.49  
11.76  
6.15  
9.23  
0.84  
63.53



Percentage of votes secured over total votes polled in the constituency

- 1 INC
- 2 BJP
- 3 SHS
- 4 OTHER PARTIES
- 5 IND + NOTA

23.28  
32.25  
16.86  
25.32  
2.29



% of votes secured

(TOTAL ELECTORS 57141  
VOTES SECURED

| SL NO | CANDIDATE NAME                  | SEX | CATEGORY | PARTY | GENERAL |
|-------|---------------------------------|-----|----------|-------|---------|
| 1     | AKASH RAJ PUROHIT               | M   | GEN      | BJP   | 6722    |
| 2     | JANAK JITENDRA SANGHVI          | M   | GEN      | INC   | 4853    |
| 3     | NISARAHMED CHAND SHAIKH         | M   | GEN      | AIMIM | 4091    |
| 4     | kanhaiyalal himmatram rawal     | M   | GEN      | SHS   | 3515    |
| 5     | Mahendra Jaysingh Pansare       | M   | GEN      | NCP   | 793     |
|       | MOHAMMEDRAMZAN                  |     |          |       |         |
| 6     | SHAIKHMOHAMMED SORATHIA         | M   | GEN      | SP    | 339     |
| 7     | Ranjeet Harendra Dutta          | M   | GEN      | IND   | 110     |
| 8     | प्रविण अजुन पाटे                | M   | GEN      | MNS   | 54      |
| 9     | YAMEEN BASHIR QURESHI           | M   | GEN      | IND   | 42      |
| 10    | abdullatif abdukkadar shaikh    | M   | GEN      | IND   | 25      |
| 11    | FAISAL YUSUF BANARASWALA        | M   | GEN      | IND   | 21      |
| 12    | mateenahmed niyajahamad rangrej | M   | GEN      | IND   | 19      |
|       |                                 |     |          |       |         |
| 13    | MOHAMMEDUMER ABDULSAMAD KHAN    | M   | GEN      | IND   | 16      |
| 14    | Pravin Girdharlal Tanna         | M   | GEN      | IND   | 16      |
| 15    | Sudhir Dattatray Dhamnaskar     | M   | GEN      | IND   | 13      |
| 16    | Anwarali Yawarali Kazi          | M   | GEN      | IND   | 11      |
|       | NOTA                            |     |          |       | 202     |

| Over total electors in constituency | Over total votes polled in constituency |
|-------------------------------------|---|
| 11.76                               | 32.25                                   |
| 8.49                                | 23.28                                   |
| 7.16                                | 19.63                                   |
| 6.15                                | 16.86                                   |
| 1.39                                | 3.80                                    |
| 0.59                                | 1.63                                    |
| 0.19                                | 0.53                                    |
| 0.09                                | 0.26                                    |
| 0.07                                | 0.20                                    |
| 0.04                                | 0.12                                    |
| 0.04                                | 0.10                                    |
| 0.03                                | 0.09                                    |
| 0.03                                | 0.08                                    |
| 0.03                                | 0.08                                    |
| 0.02                                | 0.06                                    |
| 0.02                                | 0.05                                    |
| 0.35                                | 0.97                                    |

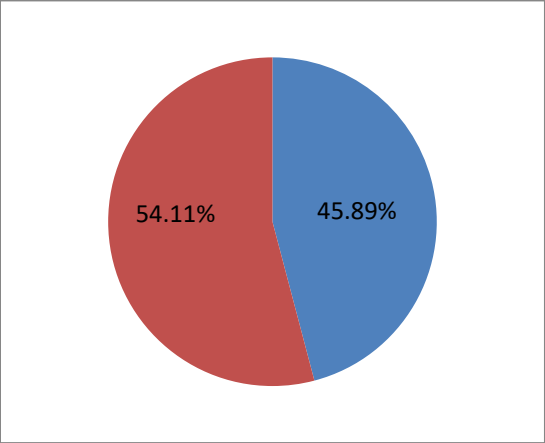
2017 BMC ELECTION

CONSITUENCY 222 C Ward

|                              |       |
|------------------------------|-------|
| Rita Bharat Makwana (Winner) | 10365 |
| Meena Shekhar Kambli         | 8362  |
| Winning Margin               | 2003  |

|  |      |
|--|------|
| Winning Margin as Percentage of Total Votes  | 3.67 |
| Winning Margin as Percentage of Votes Polled | 7.99 |

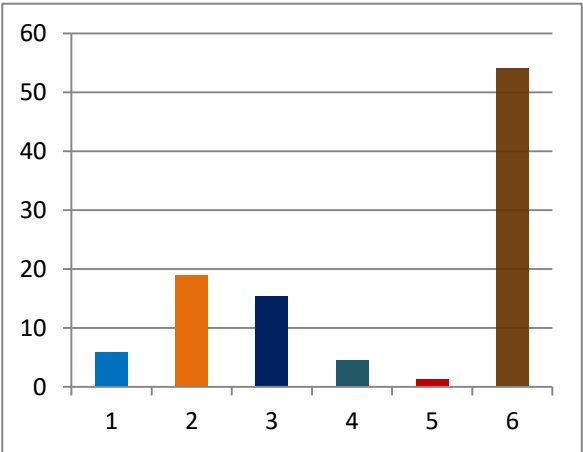
|                       |       |
|-----------------------|-------|
| TOTAL ELECTORS        | 54602 |
| VOTES POLLED          | 25058 |
| VOTES NOT POLLED      | 29544 |
| VOTING PERCENTAGE     | 45.89 |
| NON VOTING PERCENTAGE | 54.11 |



Percentage of votes secured over total electors in the constituency

- 1 INC
- 2 BJP
- 3 SHS
- 4 OTHER PARTIES
- 5 NOTA
- 6 NON VOTING %

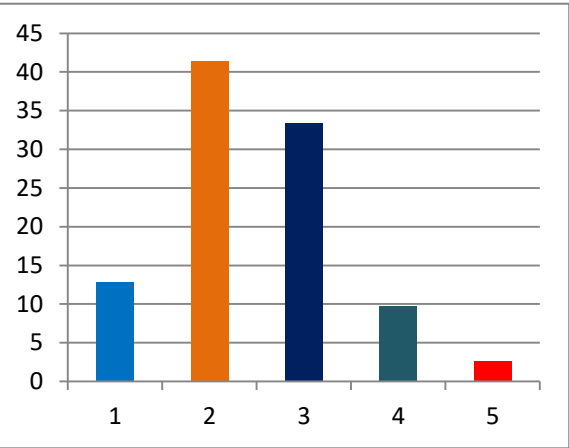
5.92  
18.98  
15.31  
4.49  
1.19  
54.11



Percentage of votes secured over total votes polled in the constituency

- 1 INC
- 2 BJP
- 3 SHS
- 4 OTHER PARTIES
- 5 NOTA

12.89  
41.36  
33.37  
9.78  
2.6



% of votes secured

| SL NO | CANDIDATE NAME                   | SEX | CATEGORY | PARTY | GENERAL |
|-------|----------------------------------|-----|----------|-------|---------|
| 1     | Rita Bharat Makwana              | F   | GEN      | BJP   | 10365   |
| 2     | Meena Shekhar Kambli             | F   | GEN      | SHS   | 8362    |
| 3     | VINITI SADANAND KHEDEKAR         | F   | GEN      | INC   | 3231    |
| 4     | Priti Shekhar GawanePatel        | F   | GEN      | MNS   | 1958    |
| 5     | Chandrakala Radheshyam Choudhary | F   | GEN      | NCP   | 490     |
| 6     | NOTA                             |     |          |       | 652     |

| Over total electors in constituency | Over total votes polled in constituency |
|-------------------------------------|---|
| 18.98                               | 41.36                                   |
| 15.31                               | 33.37                                   |
| 5.92                                | 12.89                                   |
| 3.59                                | 7.81                                    |
| 0.90                                | 1.96                                    |
| 1.19                                | 2.60                                    |

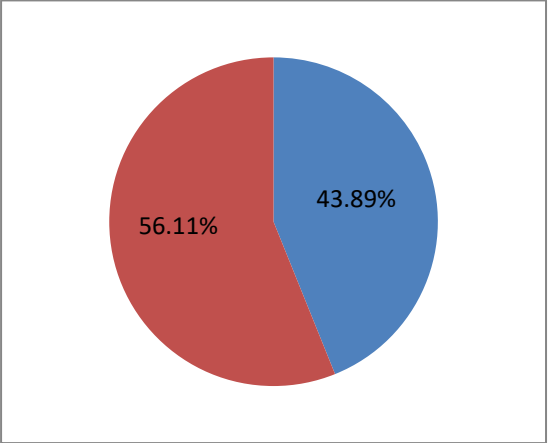
25058



CONSITUENCY 214- D WARD

|  |       |
|--|-------|
| Sarita Ajay Patil (Winner)                   | 13859 |
| Arvind J. Bane                               | 8393  |
| Winning Margin                               | 5466  |
| Winning Margin as Percentage of Total Votes  | 9.07  |
| Winning Margin as Percentage of Votes Polled | 20.67 |

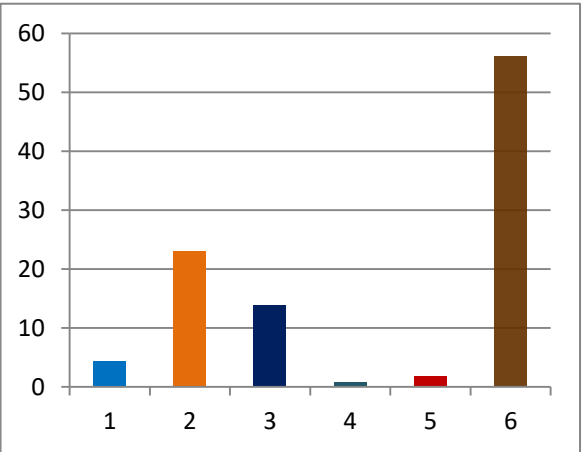
|                       |       |
|-----------------------|-------|
| TOTAL ELECTORS        | 60236 |
| VOTES POLLED          | 26439 |
| VOTES NOT POLLED      | 33797 |
| VOTING PERCENTAGE     | 43.89 |
| NON VOTING PERCENTAGE | 56.11 |



Percentage of votes secured over total electors in the constituency

- 1 INC
- 2 BJP
- 3 SHS
- 4 MNS
- 5 IND + NOTA
- 6 NON VOTING %

4.43  
23.01  
13.93  
0.76  
1.76  
56.11

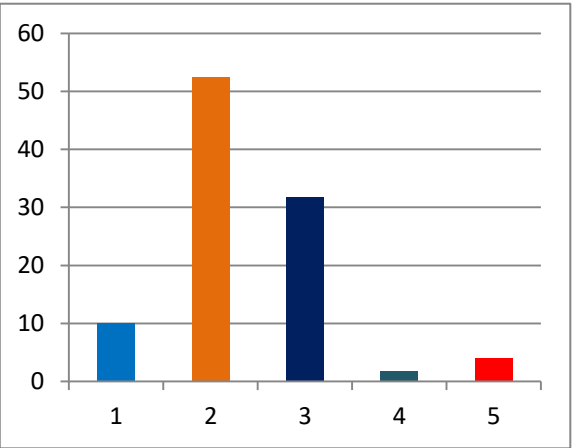


(TOTAL ELECTORS

Percentage of votes secured over total votes polled in the constituency

- 1 INC
- 2 BJP
- 3 SHS
- 4 MNS
- 5 IND + NOTA

10.09  
52.42  
31.74  
1.74  
4.01



% of votes secured

60236

VOTES SECURED

| SL NO | CANDIDATE NAME             | SEX |
|-------|----------------------------|-----|
| 1     | SARITA AJAY PATIL          |     |
| 2     | Arvind Jagannnath Bane     |     |
| 3     | KAUSHIK JASVANTRAI SHAH    |     |
| 4     | Dhanraj Sahadev Naik       |     |
| 5     | Amool Shivaji Rokade       |     |
| 6     | Tushar Bhaskar Prabhoo     |     |
| 7     | Shobha Arvind Kamble       |     |
| 8     | RAJESH JOTIRAM SHINDE      |     |
| 9     | SHANKAR GANGADHAR SONAWANE |     |
| 10    | NOTA                       |     |

| CATEGORY | PARTY | GENERAL |
|----------|-------|---------|
| GEN      | BJP   | 13859   |
| GEN      | SHS   | 8393    |
| GEN      | INC   | 2668    |
| GEN      | MNS   | 460     |
| GEN      | IND   | 207     |
| GEN      | IND   | 198     |
| GEN      | IND   | 60      |
| GEN      | IND   | 36      |
| GEN      | IND   | 19      |
|          |       | 539     |
|          |       | 26439   |

Over total  
electors in  
constituency

23.01  
13.93  
4.43  
0.76  
0.34  
0.33  
0.10  
0.06  
0.03  
0.89

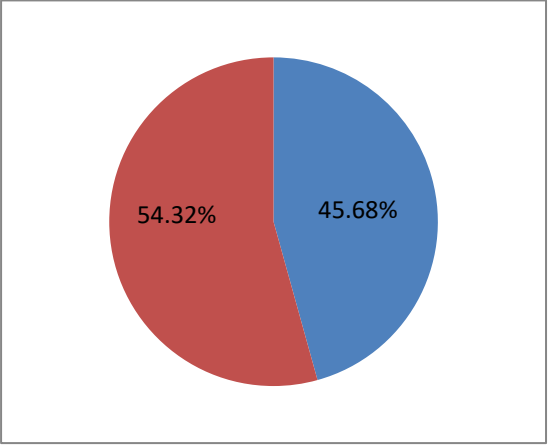
Over total  
votes polled in  
constituency

52.42  
31.74  
10.09  
1.74  
0.78  
0.75  
0.23  
0.14  
0.07  
2.04

CONSITUENCY 215 - D WARD

|  |       |
|--|-------|
| Arundhati A. Dudhwadkar(Winner)              | 10215 |
| Shweta R. Manjrekar                          | 9800  |
| Winning Margin                               | 415   |
| Winning Margin as Percentage of Total Votes  | 0.78  |
| Winning Margin as Percentage of Votes Polled | 1.71  |

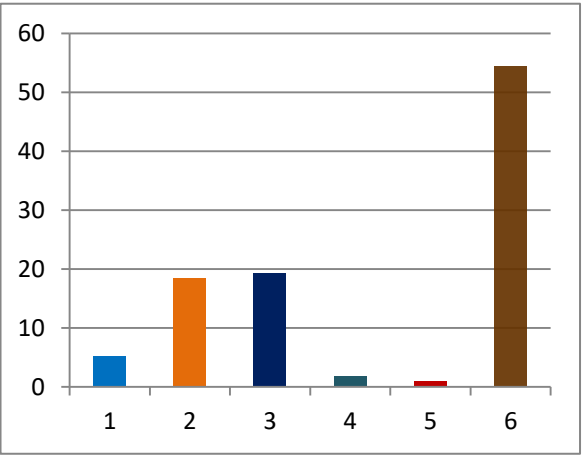
|                       |       |
|-----------------------|-------|
| TOTAL ELECTORS        | 53084 |
| VOTES POLLED          | 24251 |
| VOTES NOT POLLED      | 28833 |
| VOTING PERCENTAGE     | 45.68 |
| NON VOTING PERCENTAGE | 54.32 |



Percentage of votes secured over total electors in the constituency

- 1 INC
- 2 BJP
- 3 SHS
- 4 OTHER PARTIES
- 5 IND + NOTA
- 6 NON VOTING %

5.21  
18.46  
19.24  
1.86  
0.91  
54.32

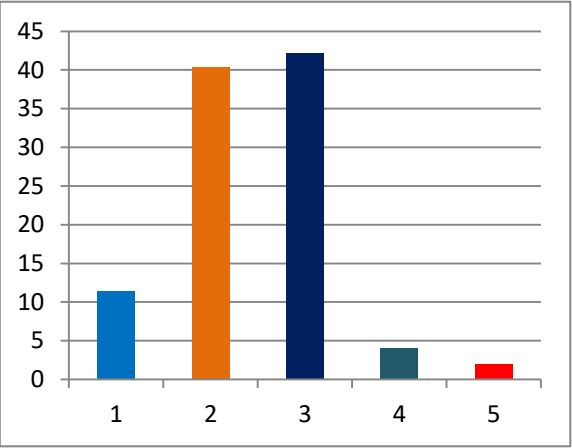


(TOTAL ELECTORS

Percentage of votes secured over total votes polled in the constituency

- 1 INC
- 2 BJP
- 3 SHS
- 4 OTHER PARTIES
- 5 IND + NOTA

11.4  
40.41  
42.12  
4.07  
2



% of votes secured

53084  
VOTES SECURED

| SL NO | CANDIDATE NAME              | SEX | CATEGORY | PARTY | GENERAL |
|-------|-----------------------------|-----|----------|-------|---------|
| 1     | Arundhati Arvind Dudhwadkar | F   | GEN      | SHS   | 10215   |
| 2     | Shweta Rupesh Manjrekar     | F   | GEN      | BJP   | 9800    |
| 3     | LALITA BIPIN MAHIDA         | F   | GEN      | INC   | 2765    |
| 4     | Saroj Satish Babar          | F   | GEN      | MNS   | 831     |
| 5     | Nisha Gautam Dharia         | F   | GEN      | SP    | 154     |
| 6     | Shanta Premji Rathod        | F   | GEN      | IND   | 63      |
| 7     | NOTA                        |     |          |       | 423     |
|       |                             |     |          |       | 24251   |

| Over total electors in constituency | Over total votes polled in constituency |
|-------------------------------------|---|
| 19.24                               | 42.12                                   |
| 18.46                               | 40.41                                   |
| 5.21                                | 11.40                                   |
| 1.57                                | 3.43                                    |
| 0.29                                | 0.64                                    |
| 0.12                                | 0.26                                    |
| 0.80                                | 1.74                                    |

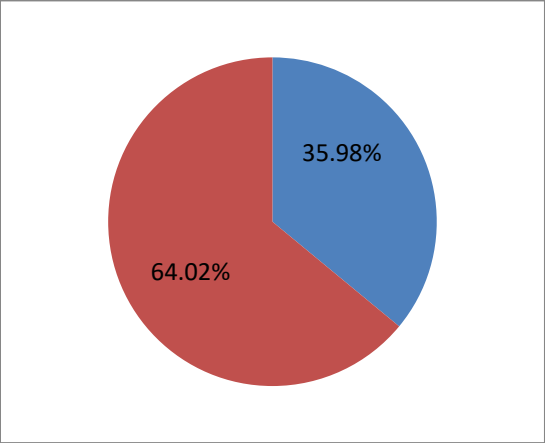
2017 BMC ELECTION

CONSITUENCY 216 - D WARD

|                                |      |
|--------------------------------|------|
| Rajendra D. Narwankar (Winner) | 8541 |
| Ramesh S. Naik                 | 5125 |
| Winning Margin                 | 3416 |

|  |       |
|--|-------|
| Winning Margin as Percentage of Total Votes  | 5.76  |
| Winning Margin as Percentage of Votes Polled | 16.02 |

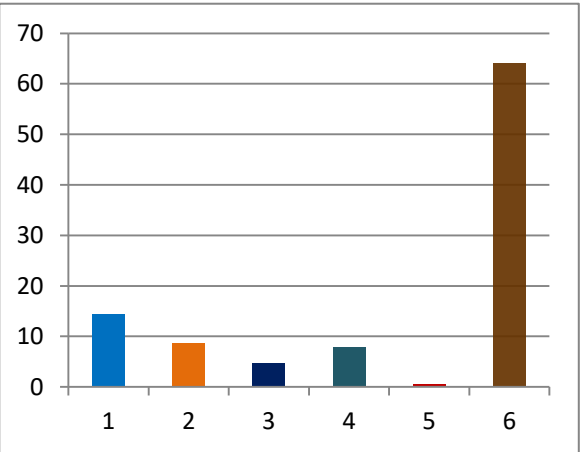
|                       |       |
|-----------------------|-------|
| TOTAL ELECTORS        | 59265 |
| VOTES POLLED          | 21325 |
| VOTES NOT POLLED      | 37940 |
| VOTING PERCENTAGE     | 35.98 |
| NON VOTING PERCENTAGE | 64.02 |



Percentage of votes secured over total electors in the constituency

- 1 INC
- 2 BJP
- 3 SHS
- 4 OTHER PARTIES
- 5 NOTA
- 6 NON VOTING %

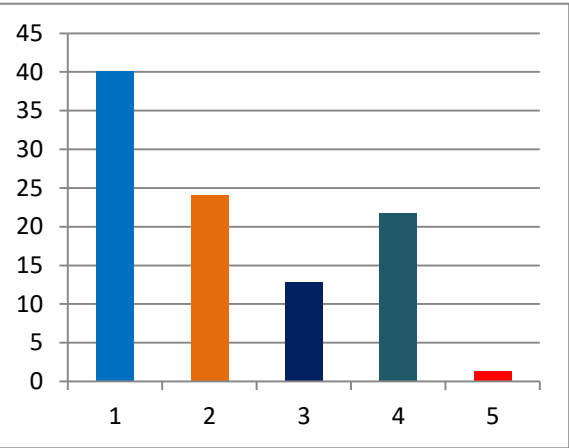
14.41  
8.65  
4.64  
7.82  
0.46  
64.02



Percentage of votes secured over total votes polled in the constituency

- 1 INC
- 2 BJP
- 3 SHS
- 4 OTHER PARTIES
- 5 NOTA

40.05  
24.03  
12.89  
21.74  
1.29



% of votes secured

(TOTAL ELECTORS 59265  
VOTES SECURED

| SL NO | CANDIDATE NAME                | SEX | CATEGORY | PARTY | GENERAL |
|-------|-------------------------------|-----|----------|-------|---------|
| 1     | RAJENDRA DATTATRAYA NARWANKAR | M   | GEN      | INC   | 8541    |
| 2     | RAMESH SHRIRAM NAIK           | M   | GEN      | BJP   | 5125    |
| 3     | RAJESH VASNAT AVALEGAONKAR    | M   | GEN      | SHS   | 2749    |
| 4     | Nasir Muhammadiqbal Qureshi   | M   | GEN      | AIMIM | 2597    |
| 5     | SUNNY RAVINDRA SANAP          | M   | GEN      | MNS   | 1137    |
| 6     | SUNIL KARBHARI PALVE          | M   | GEN      | NCP   | 903     |
| 7     | NOTA                          |     |          |       | 273     |

| Over total electors in constituency | Over total votes polled in constituency |
|-------------------------------------|---|
| 14.41                               | 40.05                                   |
| 8.65                                | 24.03                                   |
| 4.64                                | 12.89                                   |
| 4.38                                | 12.18                                   |
| 1.92                                | 5.33                                    |
| 1.52                                | 4.23                                    |
| 0.46                                | 1.28                                    |

21325

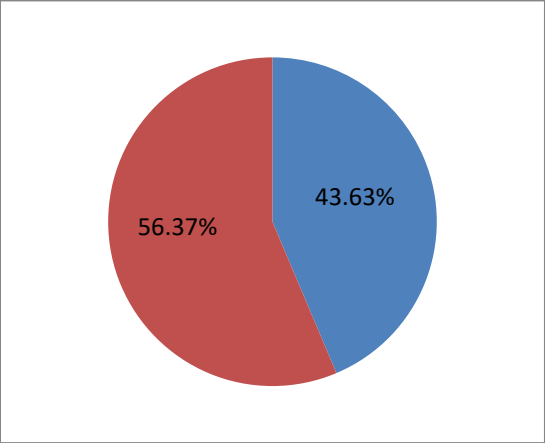
2017 BMC ELECTION

CONSITUENCY 217 - D WARD

|                             |       |
|-----------------------------|-------|
| Minal Ruchit Patel (Winner) | 13623 |
| Yugandhara Yashwant Salekar | 6282  |
| Winning Margin              | 7341  |

|  |       |
|--|-------|
| Winning Margin as Percentage of Total Votes  | 12.79 |
| Winning Margin as Percentage of Votes Polled | 29.32 |

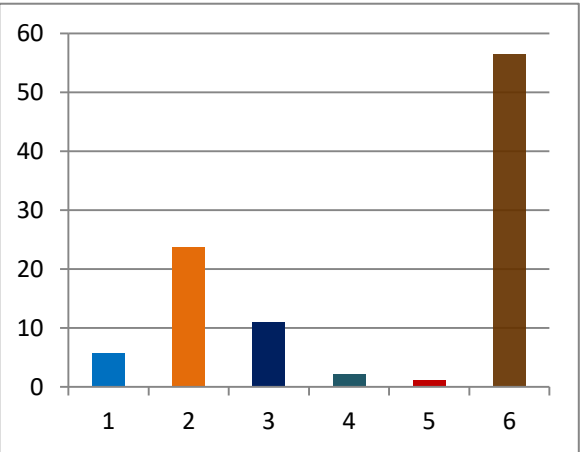
|                       |       |
|-----------------------|-------|
| TOTAL ELECTORS        | 57385 |
| VOTES POLLED          | 25039 |
| VOTES NOT POLLED      | 32346 |
| VOTING PERCENTAGE     | 43.63 |
| NON VOTING PERCENTAGE | 56.37 |



Percentage of votes secured over total electors in the constituency

- 1 INC
- 2 BJP
- 3 SHS
- 4 MNS
- 5 NOTA
- 6 NON VOTING %

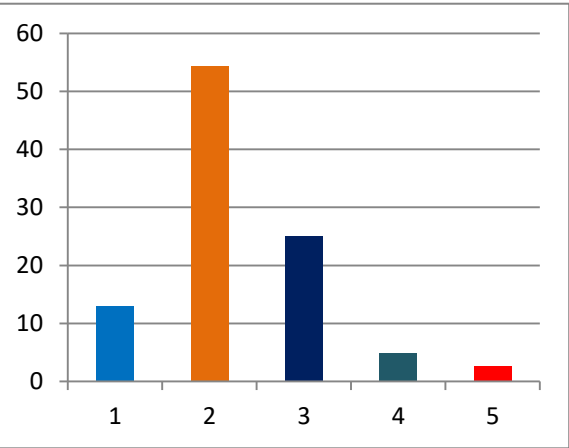
- 5.66
- 23.74
- 10.95
- 2.14
- 1.14
- 56.37



Percentage of votes secured over total votes polled in the constituency

- 1 INC
- 2 BJP
- 3 SHS
- 4 MNS
- 5 NOTA

- 12.98
- 54.41
- 25.09
- 4.91
- 2.61



% of votes secured

| SL NO | CANDIDATE NAME              | SEX | CATEGORY | PARTY | GENERAL |
|-------|-----------------------------|-----|----------|-------|---------|
| 1     | Minal Ruchit Patel          | F   | GEN      | BJP   | 13623   |
| 2     | Yugandhara Yashwant Salekar | F   | GEN      | SHS   | 6282    |
| 3     | Manisha Yogesh Patel        | F   | GEN      | INC   | 3249    |
| 4     | Chandrika Trimbak Avhad     | F   | GEN      | MNS   | 1230    |
| 5     | NOTA                        |     |          |       | 655     |
|       |                             |     |          |       | 25039   |

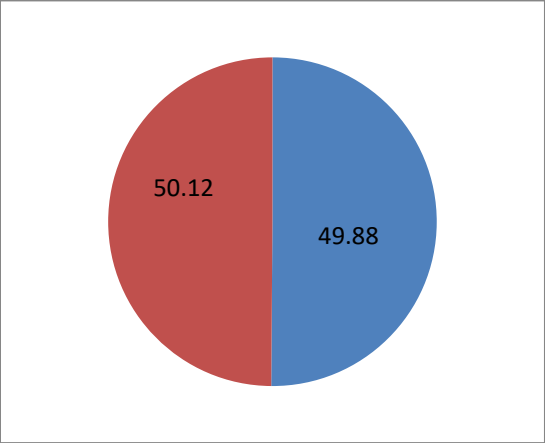
| Over total electors in constituency | Over total votes polled in constituency |
|-------------------------------------|---|
| 23.74                               | 54.41                                   |
| 10.95                               | 25.09                                   |
| 5.66                                | 12.98                                   |
| 2.14                                | 4.91                                    |
| 1.14                                | 2.62                                    |

2017 BMC ELECTION

CONSITUENCY 218- D WARD

|  |       |
|--|-------|
| Anuradha Vijay Potdar (Winner)               | 15289 |
| Minal Pravin Juvalkar                        | 9894  |
| Winning Margin                               | 5395  |
| Winning Margin as Percentage of Total Votes  | 9.47  |
| Winning Margin as Percentage of Votes Polled | 18.89 |

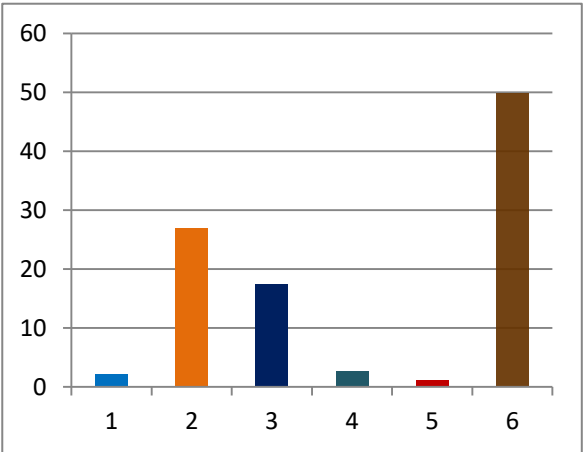
|                       |       |
|-----------------------|-------|
| TOTAL ELECTORS        | 56993 |
| VOTES POLLED          | 28565 |
| VOTES NOT POLLED      | 28428 |
| VOTING PERCENTAGE     | 50.12 |
| NON VOTING PERCENTAGE | 49.88 |



Percentage of votes secured over total electors in the constituency

- 1 INC
- 2 BJP
- 3 SHS
- 4 MNS
- 5 NOTA
- 6 NON VOTING %

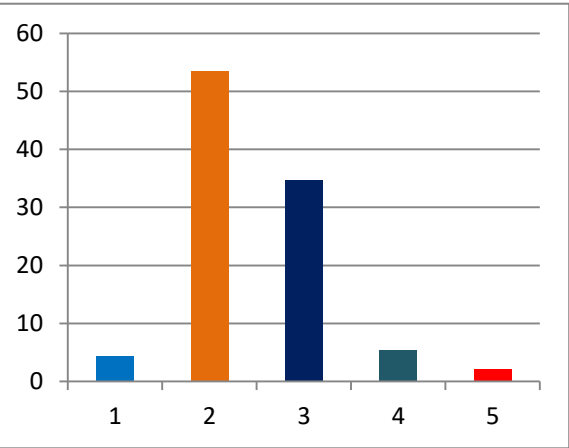
- 2.2
- 26.83
- 17.36
- 2.68
- 1.05
- 49.88



Percentage of votes secured over total votes polled in the constituency

- 1 INC
- 2 BJP
- 3 SHS
- 4 MNS
- 5 NOTA

- 4.39
- 53.52
- 34.64
- 5.35
- 2.1



% of votes secured

| SL NO | CANDIDATE NAME          | SEX | CATEGORY | PARTY | GENERAL |
|-------|-------------------------|-----|----------|-------|---------|
| 1     | Anuradha Vijay Potdar   | F   | GEN      | BJP   | 15289   |
| 2     | Minal Pravin Juwatkar   | F   | GEN      | SHS   | 9894    |
| 3     | SUMITRA MAHESH HIRLEKAR | F   | GEN      | MNS   | 1527    |
| 4     | Vaishali Suresh Tupat   | F   | GEN      | INC   | 1253    |
| 5     | NOTA                    |     |          |       | 602     |
|       |                         |     |          |       | 28565   |

| Over total electors in constituency | Over total votes polled in constituency |
|-------------------------------------|---|
| 26.83                               | 53.52                                   |
| 17.36                               | 34.64                                   |
| 2.68                                | 5.35                                    |
| 2.20                                | 4.39                                    |
| 1.06                                | 2.11                                    |

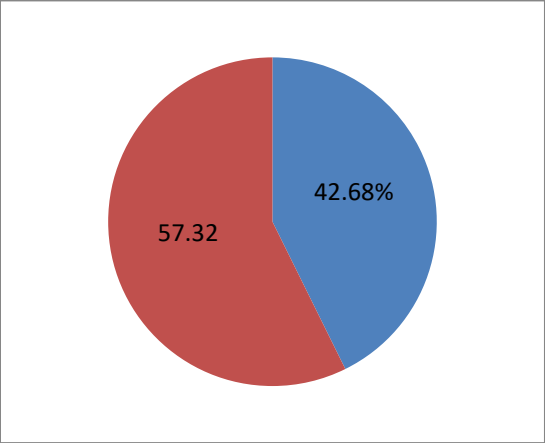
2017 BMC ELECTION

CONSITUENCY 219 D WARD

|                               |       |
|-------------------------------|-------|
| Jyotsna Devish Mehta (Winner) | 15361 |
| Priti Pramod Mandrekar        | 5456  |
| Winning Margin                | 9905  |

|  |       |
|--|-------|
| Winning Margin as Percentage of Total Votes  | 16.54 |
| Winning Margin as Percentage of Votes Polled | 38.74 |

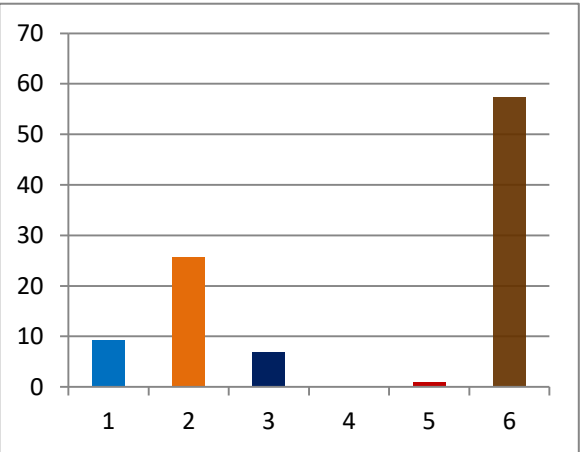
|                       |       |
|-----------------------|-------|
| TOTAL ELECTORS        | 59903 |
| VOTES POLLED          | 25569 |
| VOTES NOT POLLED      | 34334 |
| VOTING PERCENTAGE     | 42.68 |
| NON VOTING PERCENTAGE | 57.32 |



Percentage of votes secured over total electors in the constituency

- 1 INC
- 2 BJP
- 3 SHS
- 4 NCP
- 5 NOTA
- 6 NON VOTING %

9.11  
25.64  
6.84  
0.19  
0.9  
57.32

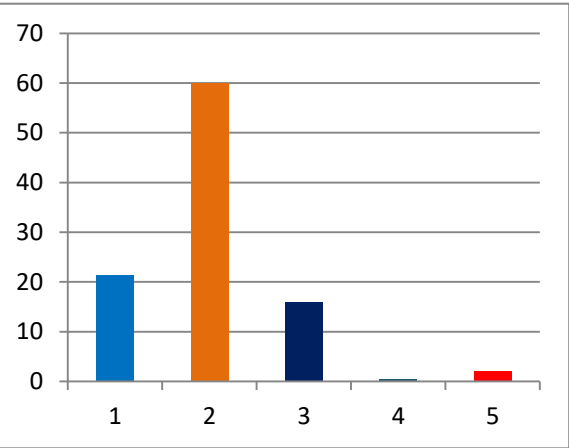


(TOTAL ELECTORS

Percentage of votes secured over total votes polled in the constituency

- 1 INC
- 2 BJP
- 3 SHS
- 4 NCP
- 5 NOTA

21.34  
60.08  
16.02  
0.43  
2.14



% of votes secured

59903

VOTES SECURED

| SL NO | CANDIDATE NAME         | SEX | CATEGORY | PARTY | GENERAL |
|-------|------------------------|-----|----------|-------|---------|
| 1     | Jyotsna Devesh Mehta   | F   | GEN      | BJP   | 15361   |
| 2     | PRITI PRAMOD MANDREKAR | F   | GEN      | INC   | 5456    |
| 3     | Durga Kiran Shinde     | F   | GEN      | SHS   | 4095    |
| 4     | Parul Rajendra Kamble  | F   | GEN      | NCP   | 111     |
| 5     | NOTA                   |     | GEN      |       | 546     |
|       |                        |     |          |       | 25569   |

Over total  
electors in  
constituency

Over total  
votes polled in  
constituency

|       |       |
|-------|-------|
| 25.64 | 60.08 |
| 9.11  | 21.34 |
| 6.84  | 16.02 |
| 0.19  | 0.43  |
| 0.91  | 2.14  |