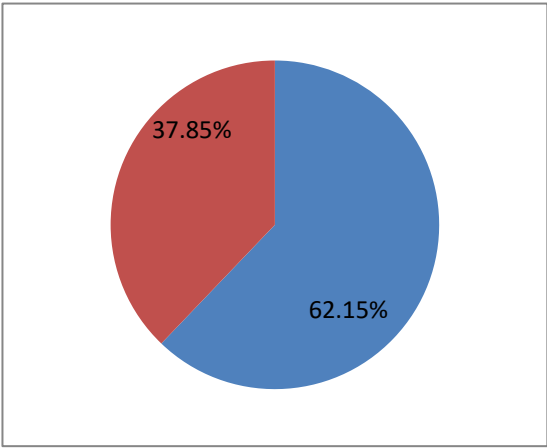


2017 BMC ELECTION

CONSTITUENCY 123- N WARD

SNEHAL SUNIL MORE (Winner)	9322
BHARATI SUBODH BAWDANE	8567
Winning Margin	755
Winning Margin as Percentage of Total Votes	1.81
Winning Margin as Percentage of Votes Polled	2.91

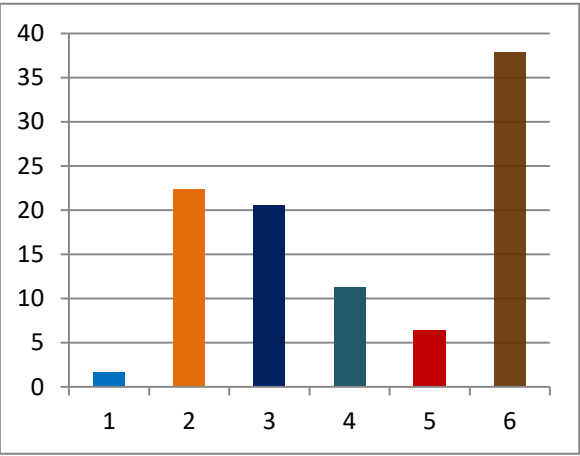
TOTAL ELECTORS	41762
VOTES POLLED	25956
VOTES NOT POLLED	15806
VOTING PERCENTAGE	62.15
NON VOTING PERCENTAGE	37.85



Percentage of votes secured over total electors in the constituency

- 1 INC
- 2 IND
- 3 SHS
- 4 OTHER PARTIES
- 5 IND + NOTA
- 6 NON VOTING %

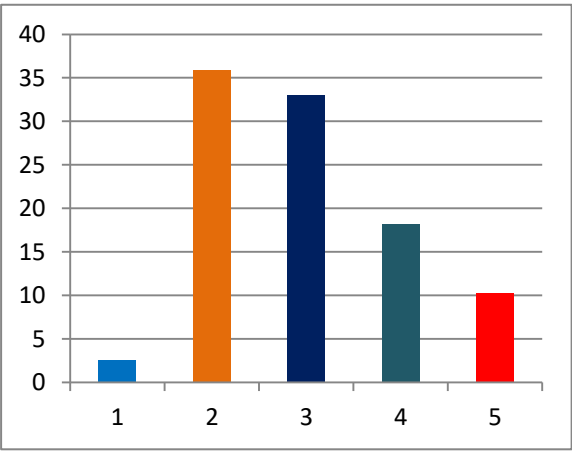
1.63
22.32
20.51
11.29
6.4
37.85



Percentage of votes secured over total votes polled in the constituency

- 1 INC
- 2 IND
- 3 SHS
- 4 OTHER PARTIES
- 5 IND + NOTA

2.62
35.91
33.01
18.16
10.3



% of votes secured

(TOTAL ELECTORS 41762
VOTES SECURED

SL NO	CANDIDATE NAME	SEX	PARTY	GENERAL
1	SNEHAL SUNIL MORE	F	IND	9322
2	BHARATI SUBODH BAWDANE	F	SHS	8567
3	SANGITA VIJAY PADWAL	F	BJP	4004
4	SUNITA PRAMOD JADHAV	F	IND	2062
5	Snehalata Kailas Bondarde	F	INC	680
6	anita gangadhar mohite	F	MNS	517
7	PRIYANKA DEEPAK NAVELE	F	BSP	192
8	ARUNA ASHOK PATIL	F	IND	153
9	JAYASHREE VINOD CHAUGULE	F	IND	100
10	ASHA RAMAKANT MOHITE	F	IND	59
11	NOTA			300

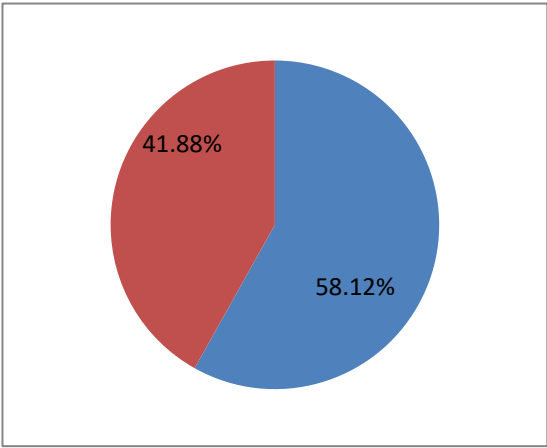
Over total electors in constituency	Over total votes polled in constituency
22.32	35.91
20.51	33.01
9.59	15.43
4.94	7.94
1.63	2.62
1.24	1.99
0.46	0.74
0.37	0.59
0.24	0.39
0.14	0.23
0.72	1.16

2017 BMC ELECTION

CONSTITUENCY 124 - N WARD

JYOTI HARUN KHAN (Winner)	6686
NAMITA JEEVAN KINI	3906
Winning Margin	2780
Winning Margin as Percentage of Total Votes	8.00
Winning Margin as Percentage of Votes Polled	13.77

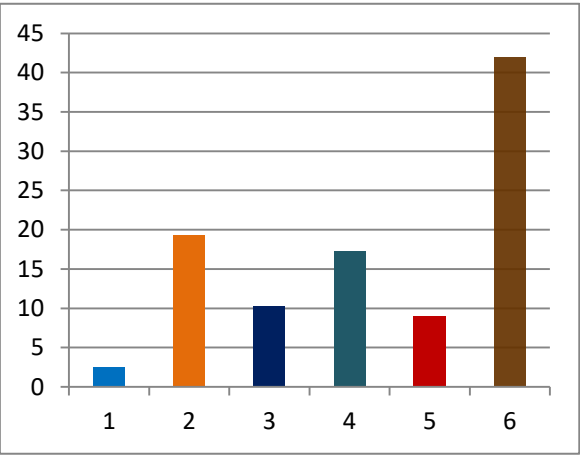
TOTAL ELECTORS	34736
VOTES POLLED	20190
VOTES NOT POLLED	14546
VOTING PERCENTAGE	58.12
NON VOTING PERCENTAGE	41.88



Percentage of votes secured over total electors in the constituency

- 1 INC
- 2 NCP
- 3 SHS
- 4 OTHER PARTIES
- 5 IND + NOTA
- 6 NON VOTING %

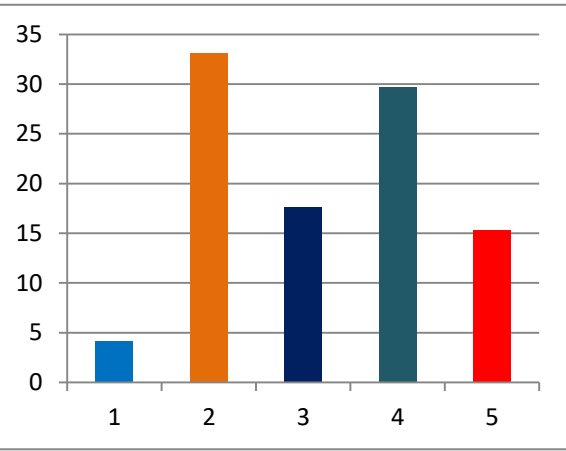
2.44
19.25
10.27
17.25
8.91
41.88



Percentage of votes secured over total votes polled in the constituency

- 1 INC
- 2 NCP
- 3 SHS
- 4 OTHER PARTIES
- 5 IND + NOTA

4.19
33.12
17.68
29.7
15.31



% of votes secured

(TOTAL ELECTORS 34736
VOTES SECURED

SL NO	CANDIDATE NAME	SEX	PARTY	GENERAL
1	Jyoti Harun Khan	F	NCP	6686
2	Namita Jeevan kini	F	BJP	3906
3	SHAMLI SHAILESH TALEKAR	F	SHS	3569
4	LALITA ROHIT TAMBE	F	IND	2715
5	Shamira Mukhtar Shaikh	F	AIMIM	1017
6	KALPANA PIYUSH CHHEDA	F	MNS	848
7	rashida khalil khot	F	INC	846
8	SANJANA SANJAY JADHAV	F	BSP	161
9	Farida Hayat Shaikh	F	SP	62
10	SARITA SAMBHAJI RAUL	F	IND	61
11	SANJANA RAJENDRA JADHAV	F	IND	57
12	UJWALA RAMESH KAMBLE	F	IND	29
13	NOTA			233

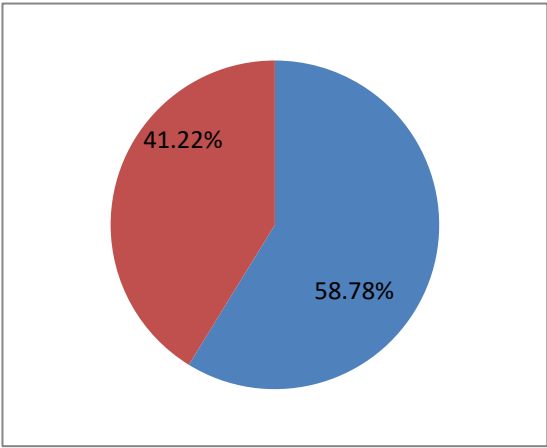
Over total electors in constituency	Over total votes polled in constituency
19.25	33.12
11.24	19.35
10.27	17.68
7.82	13.45
2.93	5.04
2.44	4.20
2.44	4.19
0.46	0.80
0.18	0.31
0.18	0.30
0.16	0.28
0.08	0.14
0.67	1.15

2017 BMC ELECTION

CONSTITUENCY 125 - N WARD

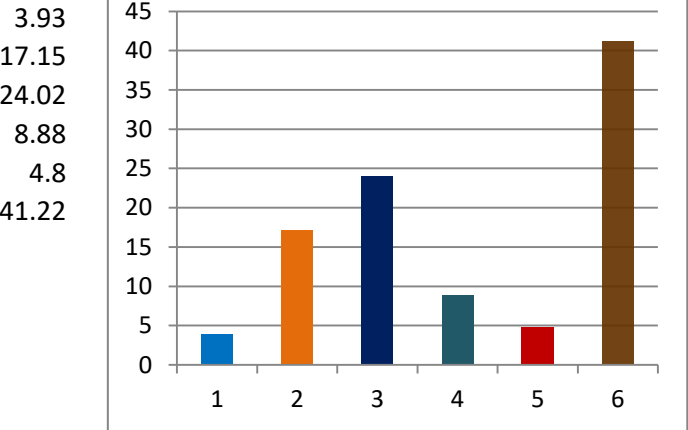
RUPALI SURESH AWALE (Winner)	10652
SAKSHI SACHIN PAWAR	7608
Winning Margin	3044
Winning Margin as Percentage of Total Votes	6.86
Winning Margin as Percentage of Votes Polled	11.68

TOTAL ELECTORS	44351
VOTES POLLED	26069
VOTES NOT POLLED	18282
VOTING PERCENTAGE	58.78
NON VOTING PERCENTAGE	41.22



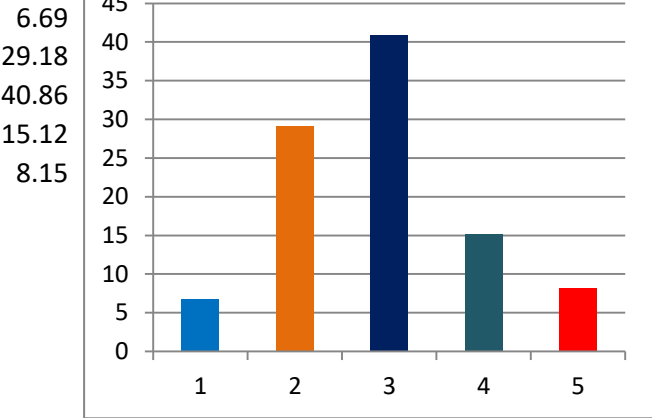
Percentage of votes secured over total electors in the constituency

- 1 INC
- 2 BJP
- 3 SHS
- 4 OTHER PARTIES
- 5 IND + NOTA
- 6 NON VOTING %



Percentage of votes secured over total votes polled in the constituency

- 1 INC
- 2 BJP
- 3 SHS
- 4 OTHER PARTIES
- 5 IND + NOTA



% of votes secured

(TOTAL ELECTORS 44351
VOTES SECURED

SL NO	CANDIDATE NAME	SEX	PARTY	GENERAL
1	Rupali Suresh Awale	F	SHS	10652
2	Sakshi Sachin Pawar	F	BJP	7608
3	VAISHALI RAJENDRA KAMBLE	F	INC	1745
4	chetna chandrakant chavan	F	BSP	1522
5	SUCHITA SATISH PAWAR	F	IND	1239
6	Surekha Uttam Ghuge	F	MNS	969
7	Vaishali Chandrakant More	F	NCP	746
8	SANGEETA VITTHAL TELANG	F	BBM	437
9	SHEELA NAMDEV UBALE	F	IND	250
10	SARIKA KISHOR KARDAK	F	JDS	127
11	JYOTI MILIND RAIGAONKAR	F	SP	108
12	SMIITA MALHARI SATHE	F	IND	74
13	DIMPLE DHARMESH THAKKAR	F	IND	67
14	KOMAL DHAMMADEEP BANSODE	F	RPI(A)	31
15	NOTA			494

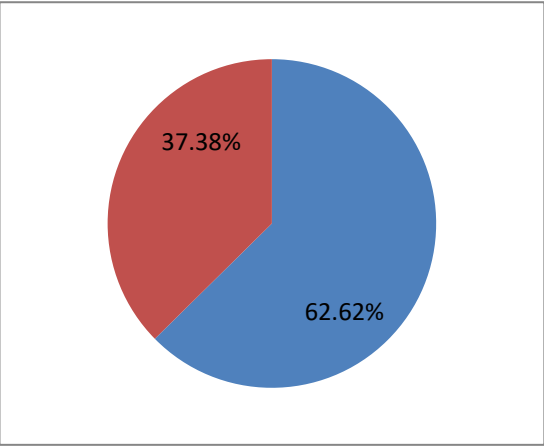
Over total electors in constituency	Over total votes polled in constituency
24.02	40.86
17.15	29.18
3.93	6.69
3.43	5.84
2.79	4.75
2.18	3.72
1.68	2.86
0.99	1.68
0.56	0.96
0.29	0.49
0.24	0.41
0.17	0.28
0.15	0.26
0.07	0.12
1.11	1.89

2017 BMC ELECTION

CONSTITUENCY 126 - N WARD

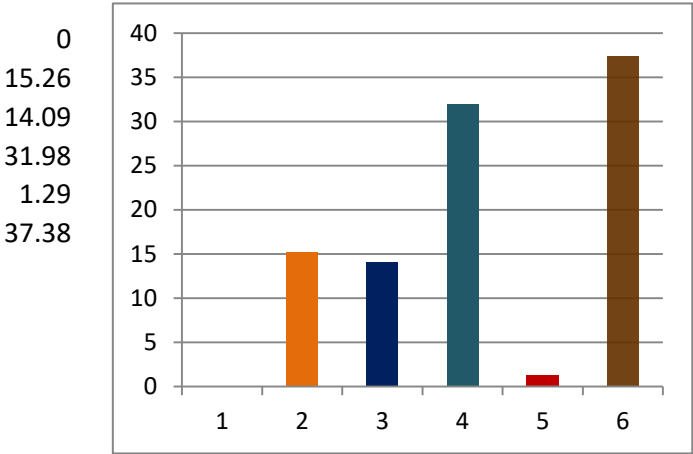
ARCHANA SANJAY BHALERAO (Winner)	12759
SHRADDHA RAJENDRA CHANKADAN	6089
Winning Margin	6670
Winning Margin as Percentage of Total Votes	16.72
Winning Margin as Percentage of Votes Polled	26.69

TOTAL ELECTORS	39900
VOTES POLLED	24986
VOTES NOT POLLED	14914
VOTING PERCENTAGE	62.62
NON VOTING PERCENTAGE	37.38



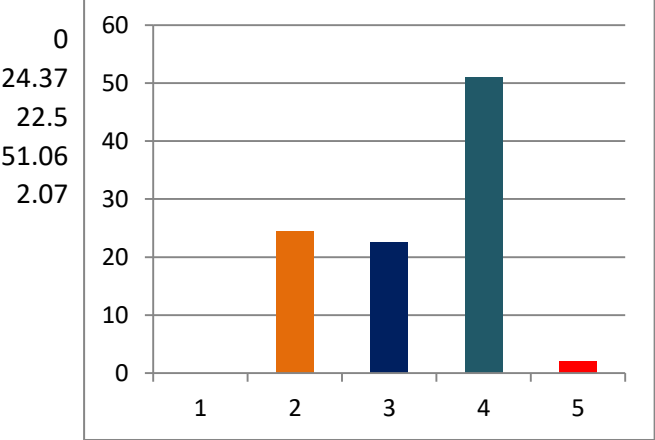
Percentage of votes secured over total electors in the constituency

- 1 INC
- 2 BJP
- 3 SHS
- 4 MNS
- 5 NOTA
- 6 NON VOTING %



Percentage of votes secured over total votes polled in the constituency

- 1 INC
- 2 BJP
- 3 SHS
- 4 MNS
- 5 NOTA



% of votes secured

(TOTAL ELECTORS 39900
VOTES SECURED

SL NO	CANDIDATE NAME	SEX
1	ARCHANA SANJAY BHALERAO	F
2	Shraddha Rajendra Chankadan	F
3	SWATI SUNIL SHITAP	F
4	NOTA	

PARTY	GENERAL
MNS	12759
BJP	6089
SHS	5623
	515

Over total electors in constituency	Over total votes polled in constituency
31.98	51.06
15.26	24.37
14.09	22.50
1.29	2.06

24986

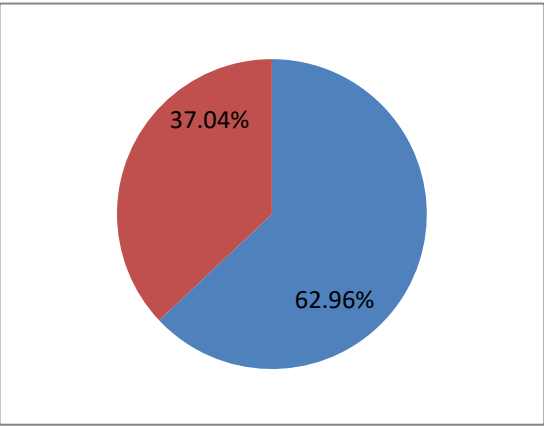
2017 BMC ELECTION

CONSTITUENCY 127 - N WARD

TUKARAM KRISHNA PATIL (Winner)	8596
RITU RAJESH TAWDE	4572
Winning Margin	4024

Winning Margin as Percentage of Total Votes	11.01
Winning Margin as Percentage of Votes Polled	17.49

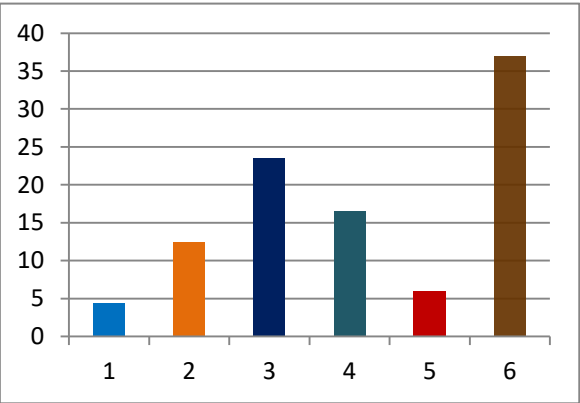
TOTAL ELECTORS	36535
VOTES POLLED	23004
VOTES NOT POLLED	13531
VOTING PERCENTAGE	62.96
NON VOTING PERCENTAGE	37.04



Percentage of votes secured over total electors in the constituency

- 1 INC
- 2 BJP
- 3 SHS
- 4 OTHER PARTIES
- 5 IND + NOTA
- 6 NON VOTING %

4.35
12.51
23.53
16.58
5.99
37.04

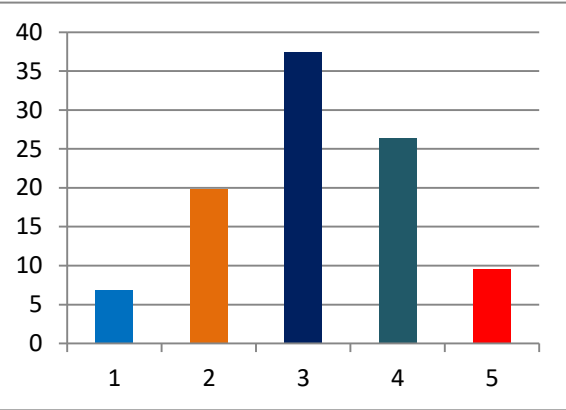


(TOTAL ELECTORS

Percentage of votes secured over total votes polled in the constituency

- 1 INC
- 2 BJP
- 3 SHS
- 4 OTHER PARTIES
- 5 IND + NOTA

6.91
19.87
37.37
26.34
9.51



% of votes secured

36535
VOTES SECURED

Over total
electors in
constituency

Over total
votes polled in
constituency

SL NO	CANDIDATE NAME	SEX	PARTY	GENERAL
1	TUKARAM KRISHNA PATIL	M	SHS	8596
2	RITU RAJESH TAWDE	F	BJP	4572
3	GANESH VASANT BHAGAT	M	MNS	4458
4	KETAN PRAFUL SHAH	M	INC	1589
5	NAVNATH SHANKAR SHEJWAL	M	IND	827
6	SANJAY MOTIRAM JADHAV	M	BBM	559
7	JYOTI PRAMOD KEDARE	F	BSP	541
8	CHANDRAMANI CHANDRAKANT JADHAV	M	NCP	425
9	VIJAY VITTHAL GORE	M	IND	322
10	SATISH SAMPAT LOKHANDE	M	IND	222
11	DINESH DILIP SHELAR	M	IND	104
12	Yogesh Raghunath Pawar	M	IND	96
13	PRAKASH SHANKAR KAMBLE	M	IND	79
14	Sachin Harishchandra Patade	M	IND	69
15	SANJAY VASUDEO SAWANT	M	IND	64
16	SURESH MAHADEV BHOSALE	M	IND	45
17	Santosh Vitthal Salunke	M	IND	42
18	RAJESH MADHUKAR PARKHE	M	RPI(K)	40
19	Sudarshan Kisan Ahire	M	IND	35
20	SHRIKANT YASHWANT SURVE	M	IND	30
21	DATTARAM NARAYAN KANK	M	ABS	27
22	Jairam Haridas Kagade	M	SAMBRIG	10
23	NOTA			252
				23004

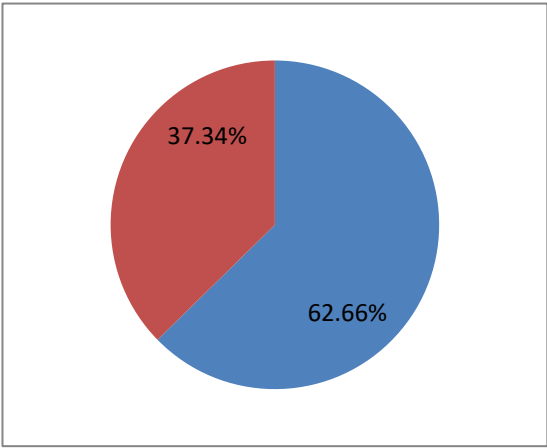
23.53	37.37
12.51	19.87
12.20	19.38
4.35	6.91
2.26	3.60
1.53	2.43
1.48	2.35
1.16	1.85
0.88	1.40
0.61	0.97
0.28	0.45
0.26	0.42
0.22	0.34
0.19	0.30
0.18	0.28
0.12	0.20
0.11	0.18
0.11	0.17
0.10	0.15
0.08	0.13
0.07	0.12
0.03	0.04
0.69	1.10

2017 BMC ELECTION

CONSTITUENCY 128 - N WARD

ASHWINI DEEPAK HANDE (Winner)	12980
SHUBHANGI DASHRATH SHIRKE	4910
Winning Margin	8070
Winning Margin as Percentage of Total Votes	20.07
Winning Margin as Percentage of Votes Polled	32.03

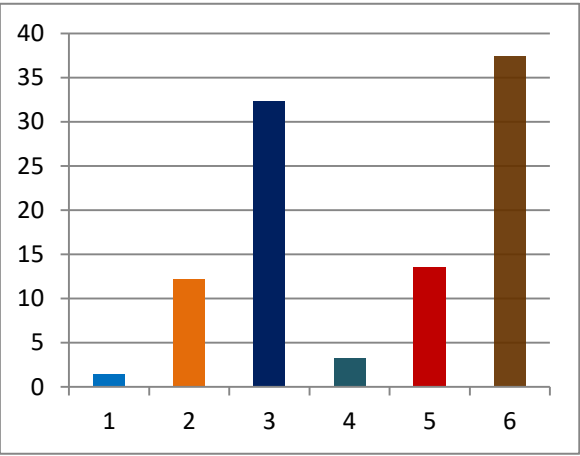
TOTAL ELECTORS	40210
VOTES POLLED	25197
VOTES NOT POLLED	15013
VOTING PERCENTAGE	62.66
NON VOTING PERCENTAGE	37.34



Percentage of votes secured over total electors in the constituency

- 1 INC
- 2 BJP
- 3 SHS
- 4 OTHER PARTIES
- 5 IND + NOTA
- 6 NON VOTING %

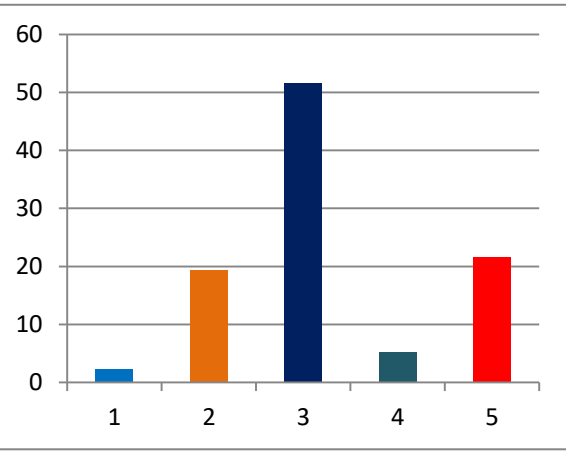
1.44
12.18
32.28
3.28
13.48
37.34



Percentage of votes secured over total votes polled in the constituency

- 1 INC
- 2 BJP
- 3 SHS
- 4 OTHER PARTIES
- 5 IND + NOTA

2.3
19.44
51.51
5.24
21.51



% of votes secured

(TOTAL ELECTORS 40210
VOTES SECURED

SL NO	CANDIDATE NAME	SEX	PARTY	GENERAL
1	ASHWINI DEEPAK HANDE	F	SHS	12980
2	SHUBHANGI DASHRATH SHIRKE	F	IND	4910
3	Prachi Pravin Vichare	F	BJP	4898
4	nanda manik gavhane	F	MNS	607
5	SANGEETA VIJAY VARPE	F	INC	579
6	ASHA ASHOK KANASE	F	NCP	287
7	nanda maruti gaikwad	F	BBM	276
8	PUSHPALATA ATMARAM TALEKAR	F	SAMBRIG	148
9	Kavita Dasharath Chilawant	F	IND	122
10	KAMINI PRADEEP CHAUHAN	F	IND	42
11	NOTA			348

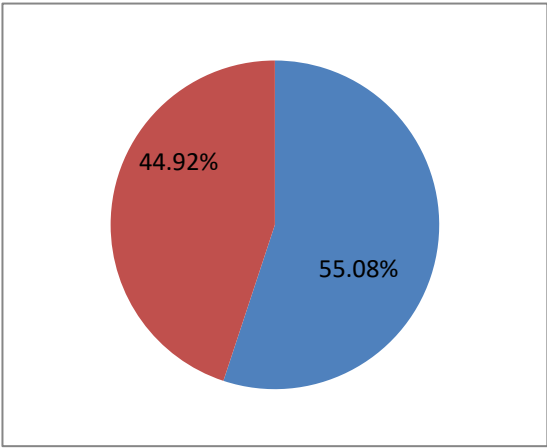
Over total electors in constituency	Over total votes polled in constituency
32.28	51.51
12.21	19.49
12.18	19.44
1.51	2.41
1.44	2.30
0.71	1.14
0.69	1.10
0.37	0.59
0.30	0.48
0.10	0.17
0.87	1.38

2017 BMC ELECTION

CONSTITUENCY 129 - N WARD

SURYAKANT JAYHARI GAWALI (Winner)	6927
PRADIP BABAN MANDAVKAR	6712
Winning Margin	215
Winning Margin as Percentage of Total Votes	0.53
Winning Margin as Percentage of Votes Polled	0.97

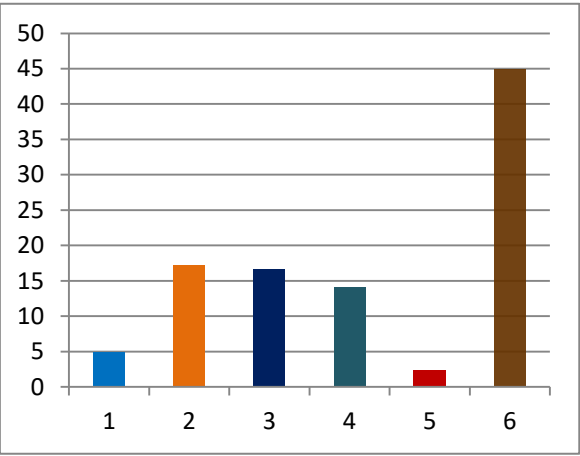
TOTAL ELECTORS	40308
VOTES POLLED	22200
VOTES NOT POLLED	18108
VOTING PERCENTAGE	55.08
NON VOTING PERCENTAGE	44.92



Percentage of votes secured over total electors in the constituency

- 1 INC
- 2 BJP
- 3 SHS
- 4 OTHER PARTIES
- 5 IND + NOTA
- 6 NON VOTING %

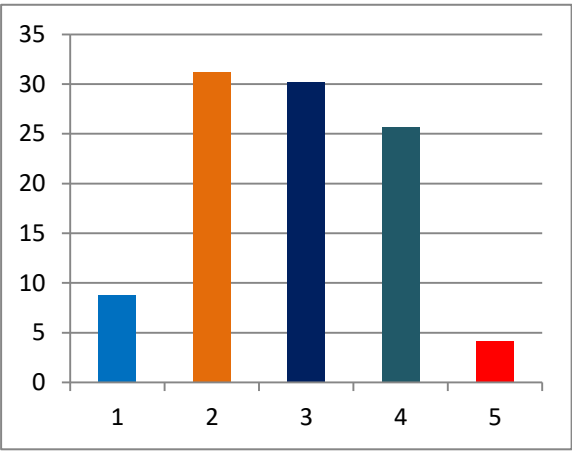
4.83
17.19
16.65
14.13
2.28
44.92



Percentage of votes secured over total votes polled in the constituency

- 1 INC
- 2 BJP
- 3 SHS
- 4 OTHER PARTIES
- 5 IND + NOTA

8.77
31.2
30.23
25.65
4.15



% of votes secured

(TOTAL ELECTORS 40308
VOTES SECURED

SL NO	CANDIDATE NAME	SEX	PARTY	GENERAL
1	Suryakant Jayhari Gawali	M	BJP	6927
2	PRADIP BABAN MANDAVKAR	M	SHS	6712
3	Roshan Harun Khan	M	NCP	4962
4	Archana Pradyumna Waghmare	M	INC	1946
5	Saleem Maqbool Pathan	M	AIMIM	670
6	RAJESH RAMCHANDRA MORE	M	IND	591
7	JAYWANT MARUTI WAGHMARE	M	ABS	63
8	NOTA			329

22200

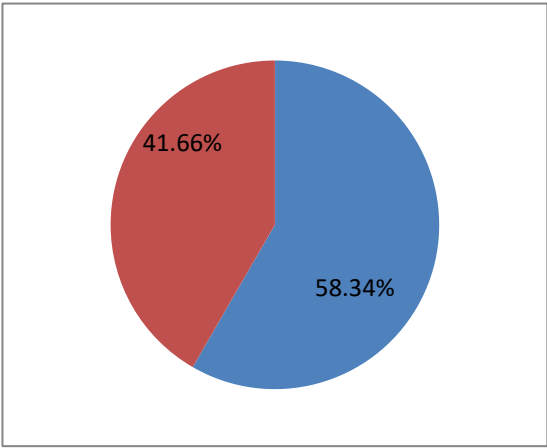
Over total electors in constituency	Over total votes polled in constituency
17.19	31.20
16.65	30.23
12.31	22.35
4.83	8.77
1.66	3.02
1.47	2.66
0.16	0.28
0.82	1.48

2017 BMC ELECTION

CONSTITUENCY 130 - N WARD

BINDU CHETAN TRIVEDI (Winner)	11055
KAVITA MAHESH WALUNJ	5910
Winning Margin	5145
Winning Margin as Percentage of Total Votes	12.48
Winning Margin as Percentage of Votes Polled	21.39

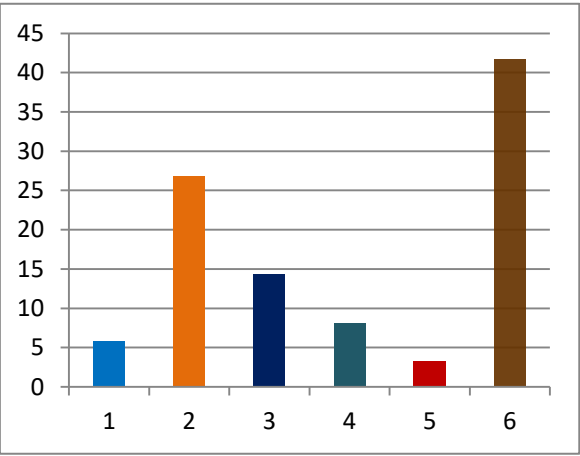
TOTAL ELECTORS	41224
VOTES POLLED	24050
VOTES NOT POLLED	17174
VOTING PERCENTAGE	58.34
NON VOTING PERCENTAGE	41.66



Percentage of votes secured over total electors in the constituency

- 1 INC
- 2 BJP
- 3 SHS
- 4 OTHER PARTIES
- 5 IND + NOTA
- 6 NON VOTING %

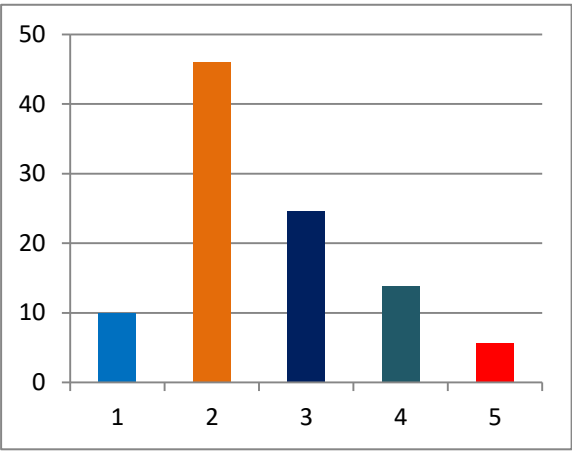
5.81
26.82
14.34
8.08
3.3
41.65



Percentage of votes secured over total votes polled in the constituency

- 1 INC
- 2 BJP
- 3 SHS
- 4 OTHER PARTIES
- 5 IND + NOTA

9.97
45.97
24.57
13.84
5.65



% of votes secured

(TOTAL ELECTORS 41224
VOTES SECURED

SL NO	CANDIDATE NAME	SEX	PARTY	GENERAL
1	BINDU CHETAN TRIVEDI	F	BJP	11055
2	KAVITA MAHESH WALUNJ	F	SHS	5910
3	Supriya Pravin Kadam	F	INC	2397
4	NAFISA AYUB SHAIKH	F	MNS	2394
5	POONAM SACHIN GUPTA	F	NCP	935
6	Lusi David farnandis	F	IND	401
7	JULIE DENIS DSOUZA	F	IND	296
8	Pratibha Swarup Khedekar	F	IND	91
9	PRITI NARANJI THAKKER	F	IND	42
10	NOTA			529

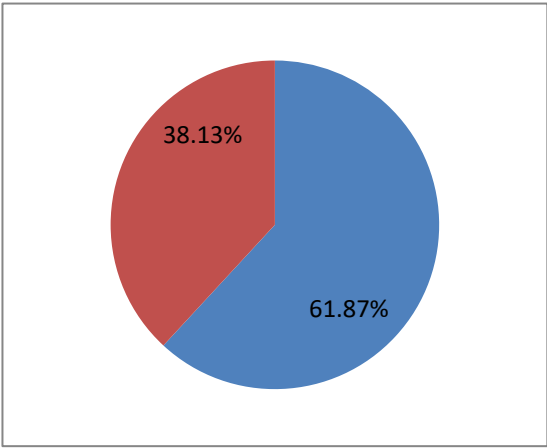
Over total electors in constituency	Over total votes polled in constituency
26.82	45.97
14.34	24.57
5.81	9.97
5.81	9.95
2.27	3.89
0.97	1.67
0.72	1.23
0.22	0.38
0.10	0.17
1.28	2.20

2017 BMC ELECTION

CONSTITUENCY 223- WARD

RAKHEE H. JADHAV (Winner)	12123
BHALCHANDRA M.SHIRSAT	11375
Winning Margin	748
Winning Margin as Percentage of Total Votes	1.47
Winning Margin as Percentage of Votes Polled	2.38

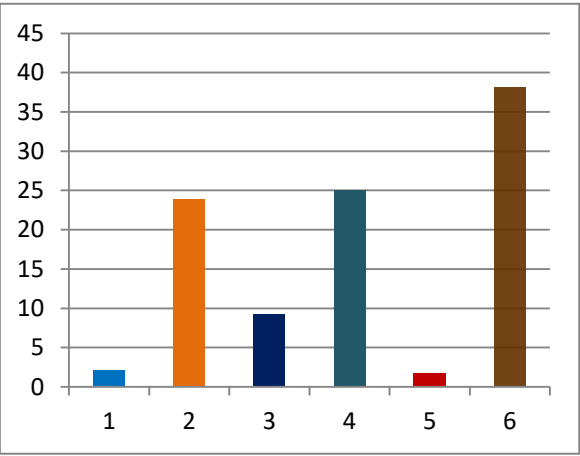
TOTAL ELECTORS	50770
VOTES POLLED	31413
VOTES NOT POLLED	19357
VOTING PERCENTAGE	61.87
NON VOTING PERCENTAGE	38.13



Percentage of votes secured over total electors in the constituency

- 1 INC
- 2 NCP
- 3 SHS
- 4 OTHER PARTIES
- 5 IND + NOTA
- 6 NON VOTING %

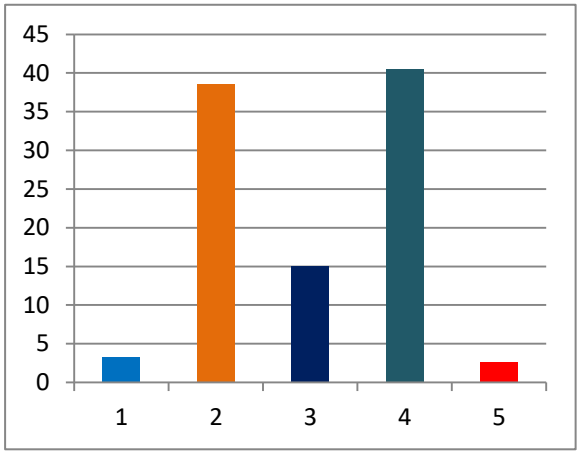
2.04
23.88
9.26
25.02
1.67
38.13



Percentage of votes secured over total votes polled in the constituency

- 1 INC
- 2 NCP
- 3 SHS
- 4 OTHER PARTIES
- 5 IND + NOTA

3.3
38.59
14.97
40.47
2.67



% of votes secured

(TOTAL ELECTORS 50770
VOTES SECURED

SL NO	CANDIDATE NAME	SEX	PARTY	GENERAL
1	Rakhee Harishchandra Jadhav	F	NCP	12123
2	BHALCHANDRA MOTIRAM SHIRSAT	M	BJP	11375
3	Mangal Lakhamshi Mange	M	SHS	4701
4	SURESH GANAPAT MARATHE	M	INC	1038
5	SANDEEP ANKUSH RANE	M	MNS	899
6	KAVERI DNYANESHWAR SHIRAL	F	BSP	143
7	MONTU DEEPAK JOSHI	M	IND	129
8	PRAVIN CHANDRAKANT KEDARE	M	BBM	112
9	RAMESH LALJI RANGANI	M	IND	112
10	VINAY VIDHYADHAR ACHAREKAR	M	RPI(A)	104
11	Anand Uttam Nirbhavane	M	BMP	78
12	BALKRISHNA SHRIDHAR MHASKAR	M	IND	48
13	Rajesh Roopnarayan Singh	M	IND	35
14	NOTA			516

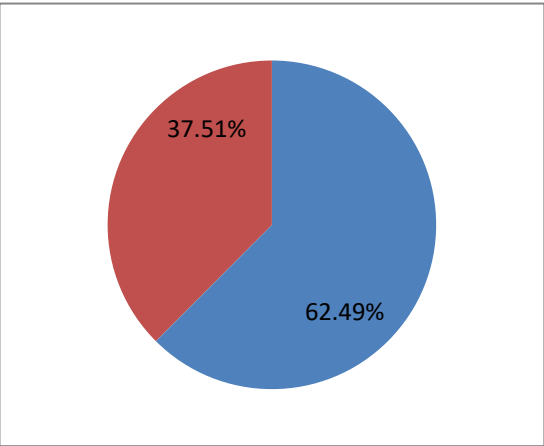
Over total electors in constituency	Over total votes polled in constituency
23.88	38.59
22.40	36.21
9.26	14.97
2.04	3.30
1.77	2.86
0.28	0.46
0.25	0.41
0.22	0.36
0.22	0.36
0.20	0.33
0.15	0.25
0.09	0.15
0.07	0.11
1.02	1.64

2017 BMC ELECTION

CONSTITUENCY 132 - N WARD

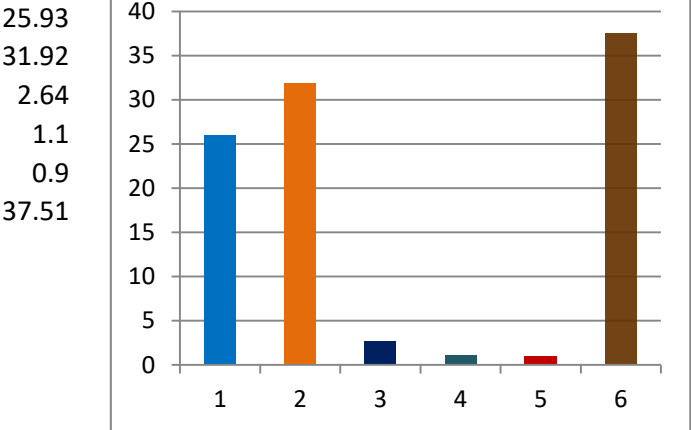
PARAG KISHOR SHAH (Winner)	14519
PRAVIN VELJI CHHEDA	11794
Winning Margin	2725
Winning Margin as Percentage of Total Votes	6.10
Winning Margin as Percentage of Votes Polled	9.76

TOTAL ELECTORS	45488
VOTES POLLED	28426
VOTES NOT POLLED	17062
VOTING PERCENTAGE	62.49
NON VOTING PERCENTAGE	37.51



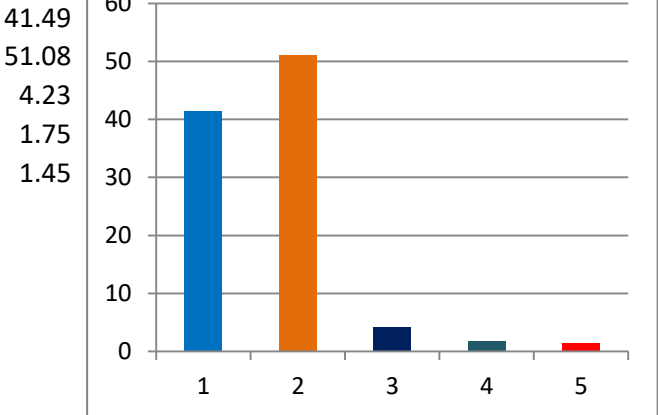
Percentage of votes secured over total electors in the constituency

- 1 INC
- 2 BJP
- 3 SHS
- 4 OTHER PARTIES
- 5 IND + NOTA
- 6 NON VOTING %



Percentage of votes secured over total votes polled in the constituency

- 1 INC
- 2 BJP
- 3 SHS
- 4 OTHER PARTIES
- 5 IND + NOTA



% of votes secured

(TOTAL ELECTORS 45488
VOTES SECURED

SL NO	CANDIDATE NAME	SEX	PARTY	GENERAL
1	PARAG KISHOR SHAH	M	BJP	14519
2	PRAVIN VELJI CHHEDA	M	INC	11794
3	SUDHAKAR LAXMAN PATIL	M	SHS	1203
4	BOBBY RAMANAND CHANDELIYA	M	MNS	240
5	ASHWIN MITHUBHAI JOSHI	M	BSP	149
6	SANJAY SHAMRAO SONAWALE	M	BMP	110
7	RAJU SHRINIWASAN NAICKER	M	IND	63
8	NOTA			348

28426

Over total electors in constituency	Over total votes polled in constituency
31.92	51.08
25.93	41.49
2.64	4.23
0.53	0.84
0.33	0.52
0.24	0.39
0.14	0.22
0.77	1.22

2017 BMC ELECTION

CONSTITUENCY 133 - N WARD

PARMESHWAR T. KADAM (Winner)	5037
RATNAM P. DEVENDRA	3791
Winning Margin	1246

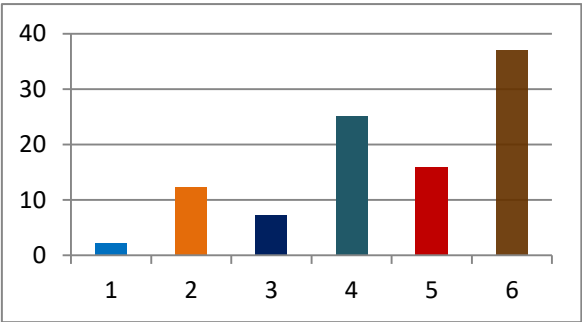
Winning Margin as Percentage of
Total Votes 3.06

Winning Margin as Percentage of
Votes Polled 4.86

Percentage of votes secured over total electors in the constituency

- 1 INC
2 MNS
3 SHS
4 OTHER PARTIES
5 IND + NOTA
6 NON VOTING %

2.26
12.35
7.3
25.11
15.89
37.09

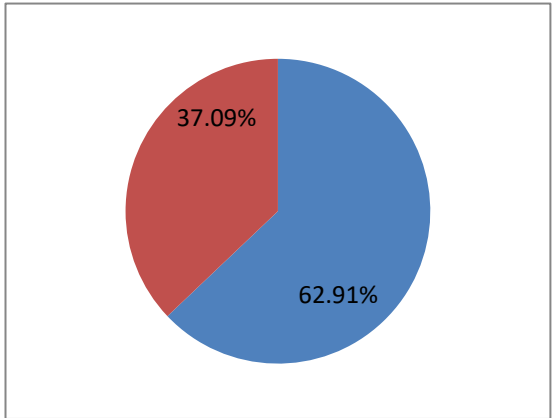


(TOTAL ELECTORS

40770

VOTES SECURED

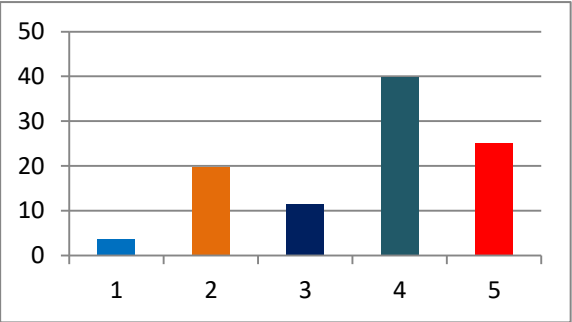
TOTAL ELECTORS	40770
VOTES POLLED	25648
VOTES NOT POLLED	15122
VOTING PERCENTAGE	62.91
NON VOTING PERCENTAGE	37.09



Percentage of votes secured over total votes polled in the constituency

- 1 INC
2 MNS
3 SHS
4 OTHER PARTIES
5 IND + NOTA

3.59
19.64
11.61
39.9
25.26



% of votes secured

Over total
electors in
constituency

Over total
votes polled in
constituency

SL NO	CANDIDATE NAME	SEX	PARTY	GENERAL
1	Parmeshwar Tukaram Kadam	M	MNS	5037
2	RATNAM PRIYASWAMI DEVENDRA	M	BJP	3791
3	vikas damodar pawar	M	BSP	3526
4	Santosh Bhagoji Pingle	M	IND	3000
5	SACHIN MARUTI GAIKWAD	M	SHS	2977
6	NAMDEV DAMU UBALE	M	IND	1236
7	ANIL MARUTI SHINDE	M	IND	1097
8	MILIND BHAGWAN GAIKWAD	M	BBM	942
9	BRIJMOHAN BALRAM SHARMA	M	INC	920
10	ABDULAZIZ ATIKJABBAR SHAIKH	M	SP	863
11	MANOJ SHIVAJI DHUMALE	M	NCP	497
12	Nitin Raghunath Jadhav	M	BMP	295
13	RAJU SUDAM KHARAT	M	IND	192
14	RAVINDRA BABURAO NETAVATE	M	RPI(A)	144
15	VINOD DAGADU SALVE	M	IND	120
16	VINOD ROHIDAS SONAWANE	M	IND	118
17	AVINASH LAXMAN PANDHARE	M	IND	96
18	SUDHIR LAXMAN KAMBLE	M	LJP	89
19	SUSHILKUMAR SANTBAHADUR SINGH	M	IND	74
20	Sandeep Manohar Shete	M	IND	68
21	NADEEM NOOR SAYYED	M	ABS	47
22	UMESH SAHEBRAO AMRUTKAR	M	IND	44
23	Dilip Bholanath Sharma	M	UCP	40
24	NOTA			435

12.35	19.64
9.30	14.78
8.65	13.75
7.36	11.70
7.30	11.61
3.03	4.82
2.69	4.28
2.31	3.67
2.26	3.59
2.12	3.36
1.22	1.94
0.72	1.15
0.47	0.75
0.35	0.56
0.29	0.47
0.29	0.46
0.24	0.37
0.22	0.35
0.18	0.29
0.17	0.27
0.12	0.18
0.11	0.17
0.10	0.16
1.07	1.70